



CRICHTON COURT, MORTIMER COMMON, READING, RG7 3ST
£1,350 PER MONTH FURNISHED

TWO DOUBLE BEDROOM FIRST FLOOR APARTMENT WITH BALCONY IN THE HEART OF MORTIMER.

Reading | 0118 4022 300 | reading@winkworth.co.uk

Winkworth

for every step...

winkworth.co.uk



DESCRIPTION:

Spacious two bedroom first floor apartment set in the heart of Mortimer conveniently located within easy walking distance of Mortimer train station, shops, post office, bank and a host of other local amenities. The property is set within a gated development and comprises large lounge/dining room adjoining a modern kitchen, master bedroom with en suite bathroom, second double bedroom and a shower room. Benefits include a private balcony, large built in wardrobes in both bedrooms, under-floor heating, double glazing, a lockable cycle store and parking. Available now. Furnished.

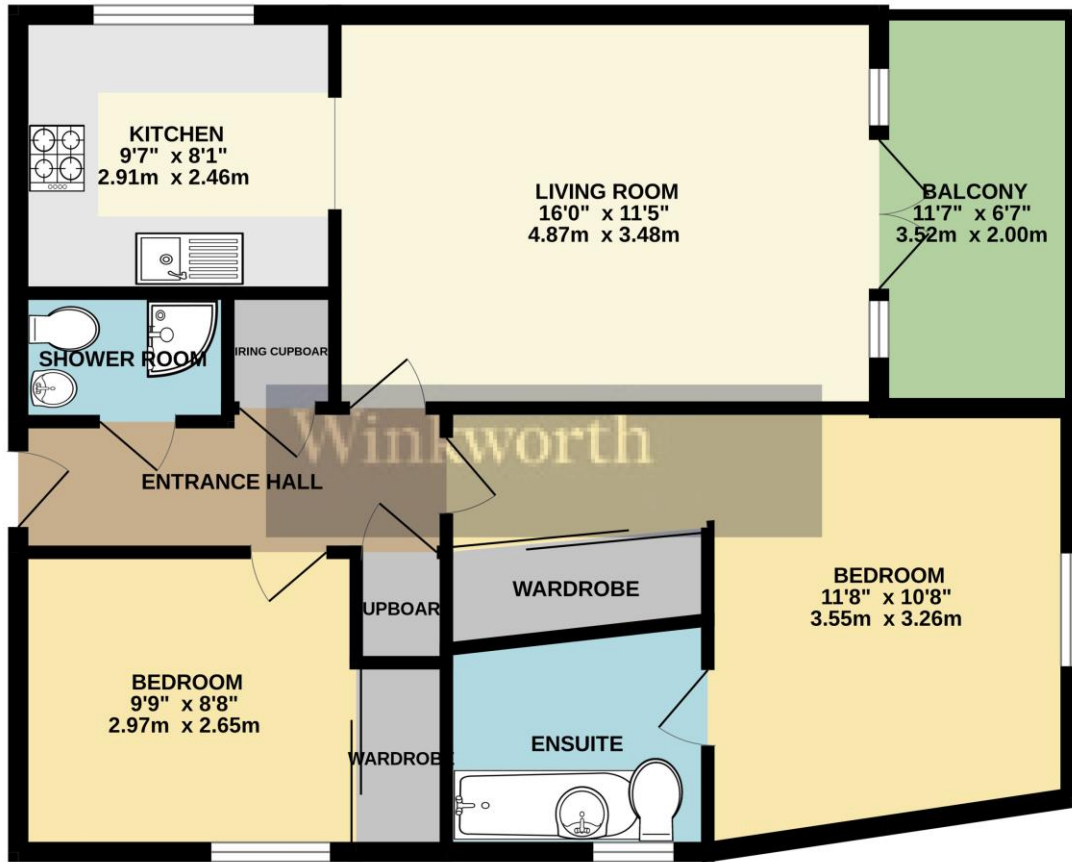
AT A GLANCE

- Open Plan Living Area
- Two Double Bedrooms
- Two Bathrooms
- Private Balcony
- Council tax band C
- Parking
- Furnished
- Available now





FIRST FLOOR
675 sq.ft. (62.7 sq.m.) approx.



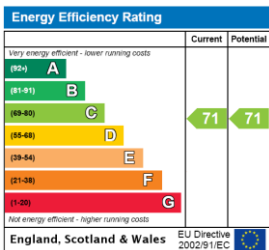
TOTAL FLOOR AREA : 675 sq.ft. (62.7 sq.m.) approx.
 Whilst every attempt has been made to ensure the accuracy of the floorplan contained here, measurements of doors, windows, rooms and any other items are approximate and no responsibility is taken for any error, omission or mis-statement. This plan is for illustrative purposes only and should be used as such by any prospective purchaser. The services, systems and appliances shown have not been tested and no guarantee as to their operability or efficiency can be given.
 Made with Metropix ©2023

This floorplan is for illustration purposes only and is not to scale. The position and size of doors, windows, appliances and other features are approximate.

Deposit: £1,557.69

Council Tax Band:C

Where no figures are shown, we have been unable to ascertain the information. All figures that are shown were correct at the time of printing.



Reading | 0118 4022 300 | reading@winkworth.co.uk



for every step...

winkworth.co.uk

Winkworth wishes to inform prospective buyers and tenants that these particulars are a guide and act as information only. All our details are given in good faith and believed to be correct at the time of printing but they don't form part of an offer or contract. No Winkworth employee has authority to make or give any representation or warranty in relation to this property. All fixtures and fittings, whether fitted or not are deemed removable by the vendor unless stated otherwise and room sizes are measured between internal wall surfaces, including furnishings.