



MALDEN ROAD, HERTFORDSHIRE, WD6

**£525,000 FREEHOLD**

## A PERIOD THREE DOUBLE BEDROOM, TWO BATHROOM HOUSE CLOSE TO THE TOWN CENTRE

**Borehamwood** | 020 8953 8899 | [borehamwood@winkworth.co.uk](mailto:borehamwood@winkworth.co.uk)



Winkworth

## DESCRIPTION:

This well presented period style property is arranged over three floors and located in the heart of the town centre. This family home has been well cared for by the current owners and comprises a through lounge/diner leading through to a bright and airy kitchen and utility room. On the first floor there are two double bedrooms and luxury family bathroom with bath, walk-in shower cubicle, backlit vanity mirror and vanity unit. Moving up to the second floor there is a further double bedroom with en-suite shower room.

Patio doors lead from the utility room to the low maintenance rear garden, with patio area. There is also the added benefit of side access to the rear garden.

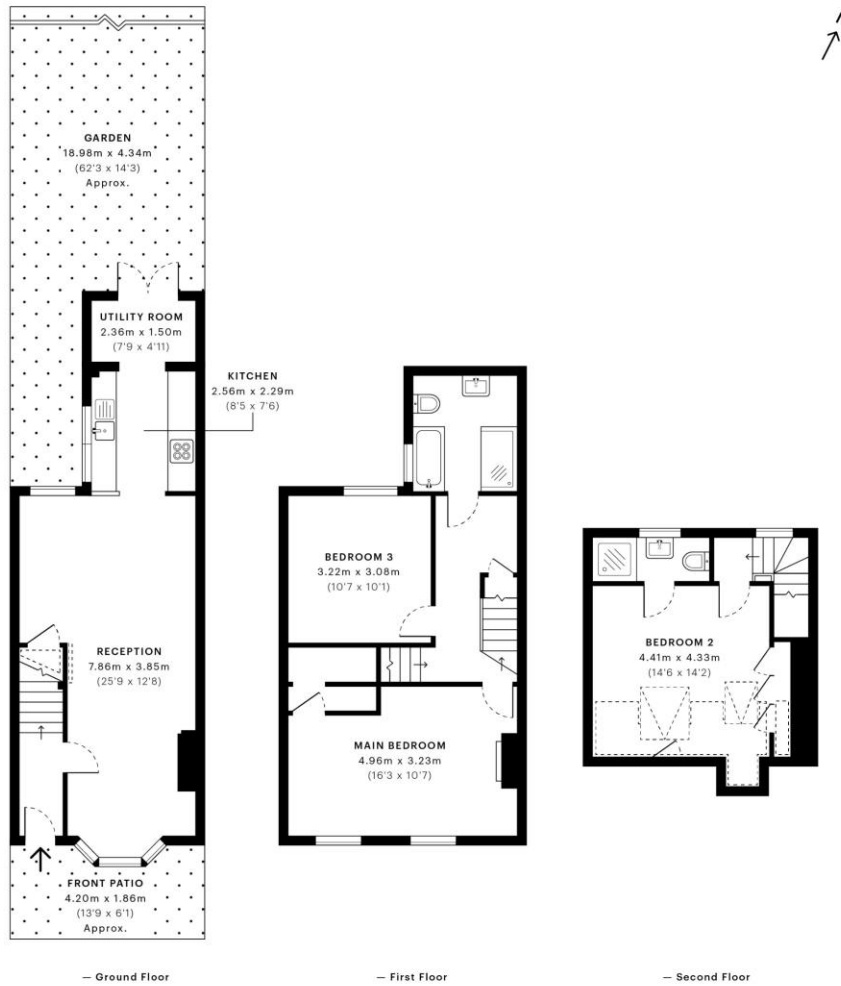
Ideally located within striking distance of the town centre and Elstree & Borehamwood train station. Internal viewing is strongly recommended.

## AT A GLANCE

- Three Double Bedrooms
- Two Bathrooms
- 1110 Square Feet
- Utility Room
- Summer House
- Sought After and Convenient Location







GROSS INTERNAL AREA (GIA)  
The footprint of the property  
103.21 sqm / 1110.94 sqft

NET INTERNAL AREA (NIA)  
Excludes walls and external features  
Includes walkways, restricted head height  
96.19 sqm / 1035.38 sqft

EXTERNAL STRUCTURAL FEATURES  
Balconies, terraces, verandas etc.  
0.00 sqm / 0.00 sqft

RESTRICTED HEAD HEIGHT  
Limited use area under 1.5 m  
5.73 sqm / 61.68 sqft



Spec Verified floor plans are produced in accordance with Royal Institution of Chartered Surveyors' Property Measurement Standards. Plots and gardens are illustrative only and excluded from all area calculations. Due to rounding, numbers may not add up precisely. All measurements shown for the individual room lengths and widths are the maximum points of measurements captured in the scan.

IPMS 3B RESIDENTIAL 100.95 sqm / 1086.62 sqft  
IPMS 3C RESIDENTIAL 97.36 sqm / 1047.97 sqft

SPEC ID: 60535a01a412d80dd218bf05

This floorplan is for illustration purposes only and is not to scale. The position and size of doors, windows, appliances and other features are approximate.

