



MORGAN MANSIONS, MORGAN ROAD, LONDON, N7  
**£600,000 LEASEHOLD**

## A CHARMING TWO BEDROOM GROUND FLOOR FLAT SET WITHIN AN IMPOSING VICTORIAN MANSION BLOCK

Islington | 0207 354 2480 | [islington@winkworth.co.uk](mailto:islington@winkworth.co.uk)

**Winkworth**



## DESCRIPTION:

This wonderful two bedroom apartment is set on the ground floor of a desirable red brick mansion block next to St. Mary Magdalene Gardens.

The property offers well proportioned, light filled rooms throughout and provides a flexible layout with ample space for entertaining.

The generous living room boasts high ceilings and is flooded in natural light through sash windows. The kitchen provides plenty of worktop and storage space whilst both double bedrooms are of generous proportions. A family sized shower room has been finished in a contemporary style and ample storage can be found throughout.

Morgan Mansions is perfectly set for the many shops restaurants and bars on Upper Street and only a short distance away from the green spaces of Highbury Fields.

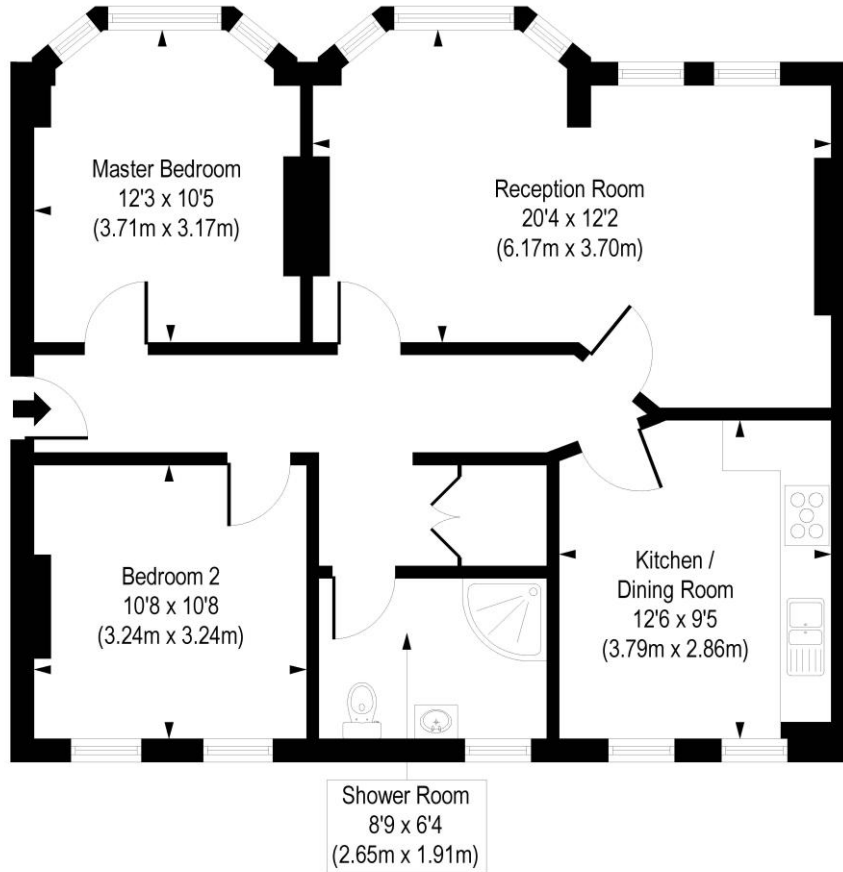
Highbury and Islington offers the closest over ground and underground links whilst Drayton Park also provides easy access to Moorgate. Numerous bus routes are located on Holloway road and Upper street and international transport is facilitated from St Pancras.

**Winkworth**



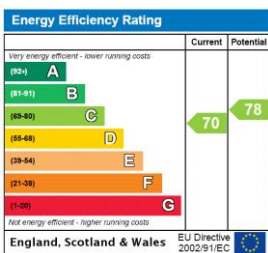
**Winkworth**

Morgan Mansions, Morgan Road, N7  
 Approx. Gross Internal Floor Area 826 sq. ft / 76.77 sq. m



COMPLIANT WITH RICS CODE OF MEASURING PRACTICE. Floorplan is for illustrative purposes only and is not to scale. Every attempt has been made to ensure the accuracy of the floorplan shown, however all measurements, fixtures, fittings and data shown are an approximate interpretation for illustrative purposes only. Liability for errors, omissions or mis-statement through negligence or otherwise is hereby excluded.

This floorplan is for illustration purposes only and is not to scale. The position and size of doors, windows, appliances and other features are approximate.



Islington | 0207 354 2480 | islington@winkworth.co.uk



winkworth.co.uk

See things differently

Winkworth wishes to inform prospective buyers and tenants that these particulars are a guide and act as information only. All our details are given in good faith and believed to be correct at the time of printing but they don't form part of an offer or contract. No Winkworth employee has authority to make or give any representation or warranty in relation to this property. All fixtures and fittings, whether fitted or not are deemed removable by the vendor unless stated otherwise and room sizes are measured between internal wall surfaces, including furnishings.