



STOCKBRIDGE ROAD, FULFLOOD, SO22 5HL

Winkworth

STOCKBRIDGE ROAD, FULFLOOD, SO22 5HL

SUBSTANTIAL, ATTRACTIVE PERIOD HOME IN FAVOURED FULFLOOD.

This well-presented Victorian home has been cleverly extended by its current owners and is located in a thriving community and sought-after area of Winchester. The mainline train station, a number of excellent schools for all ages, Peter Symonds VI Form College and two large recreational parks are all within walking distance. A former coach house, this is a rare opportunity to own an exclusive, detached period property within walking distance of the city itself.

The property enjoys many lovely period details such as wooden beams and generously proportioned rooms. The balance of the accommodation is both versatile and first class; the open hallway, giving direct access to the garden and also leading to a classic, fully fitted kitchen with butler style sink and integrated appliances which include a dishwasher, washing machine and Range cooker. Leading from the kitchen, the bright, oak-framed conservatory provides additional access to the garden via bi-fold doors on the one side and access to a good-sized dining room on the other.

To the left side of the entrance hallway is a warm and inviting sitting room, which has a feature open fireplace with cast-iron fireback.

The first floor is cleverly arranged to accommodate four double bedrooms and a fifth bedroom/ home office. The first and second bedrooms feature vaulted ceilings. Additionally, the main bedroom has a rose-clad Juliet balcony overlooking the secluded garden, and an en-suite shower room. There is a further, stylish family bathroom with claw-foot bath and travertine tiling.

A very pretty, walled garden at the rear has an area of patio, ideal for alfresco dining, with the remainder laid to lawn and flower beds. There is a good selection of shrubs and flowers, as well as an apple tree and a number of established David Austin roses. There is also an attractive summerhouse and timber-framed, insulated workshop with power and light. To the front of the property is the driveway providing access to an integral garage (accessible via the kitchen), and parking space for a further two vehicles.





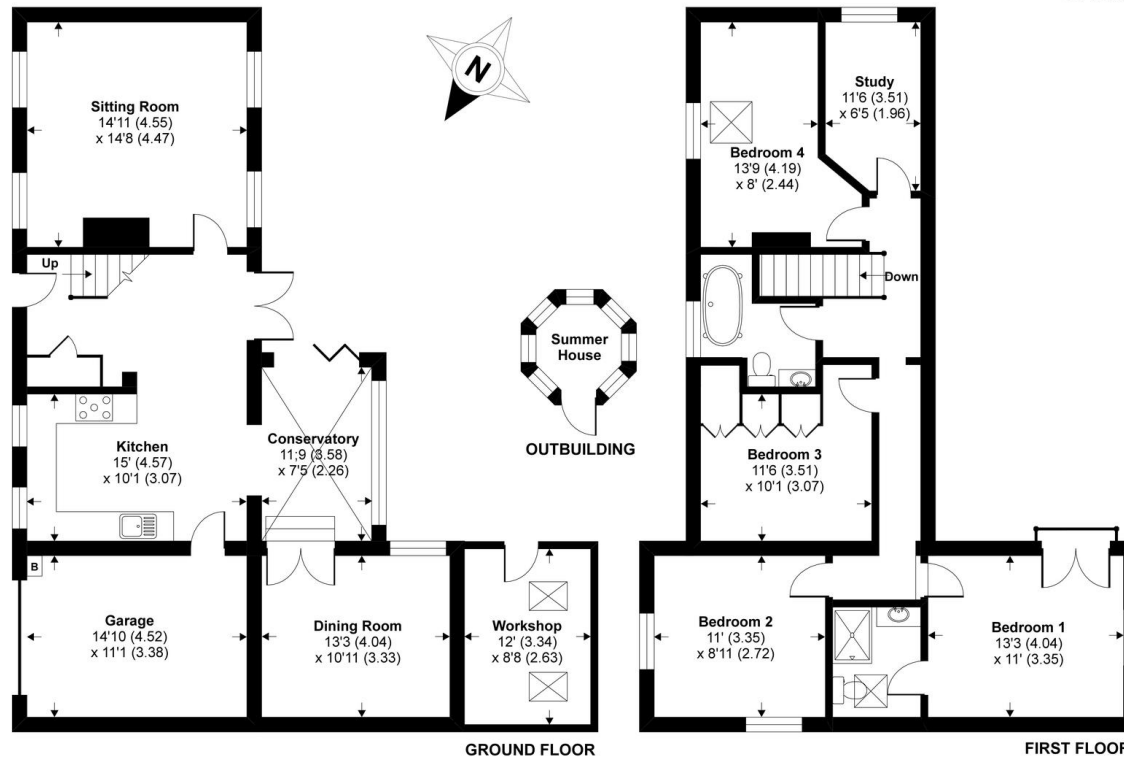
Stockbridge Road, Winchester, SO22

Approximate Area = 1823 sq ft / 169.3 sq m (includes garage)

Outbuilding(s) = 130 sq ft / 12 sq m

Total = 1953 sq ft / 181.4 sq m

For identification only - Not to scale



Floor plan produced in accordance with RICS Property Measurement Standards incorporating International Property Measurement Standards (IPMS2 Residential). © richcom 2020. Produced for Winkworth. REF: 665171

Directions

From our office in Southgate Street, turn left into the High Street taking the second right at the roundabout into Upper High Street. Take the next left over the Railway Bridge and right at the roundabout into St. Pauls Hill. Go straight over the next roundabout onto Stockbridge Road, continue on this road until you reach the mini roundabout and proceed over the mini roundabout to continue onto Stockbridge Road. The property can be found shortly on the left hand side.

Situation

Stockbridge Road is superbly positioned for easy access to the mainline railway station (links to London Waterloo in approximately 60 minutes), and City with its High Street shops, boutiques, library, coffee shops, public houses, restaurants, theatre, cinema, museums and, of course, the City's historic Cathedral. The house is situated in the catchment for good local schools including Western Primary and Westgate all-through schools, and is close to Peter Symonds College and its grounds. The road itself is very desirable, being populated with some of the more substantial period houses available to Winchester buyers.

Tenure

Freehold

Services

Mains gas, electricity, water and drainage

Council tax band

E – Winchester City Council

EPC rating

D

Viewing

Strictly by appointment with Winkworth Winchester Office

Winkworth.co.uk/winchester

Winkworth Winchester

2 Black Swan Buildings, Southgate Street, Winchester, SO23 9DT
01962 866 777 | winchester@winkworth.co.uk

Winkworth Country House Department

11 Berkeley Street, Mayfair, London, W1J 8DS
020 7871 0589 | countryhouse@winkworth.co.uk

Winkworth

See things differently