



Newton Road, W2

£1,250 per week (£5,416.66 PCM) *Furnished*



An impeccably redesigned two-bedroom apartment in a beautiful, detached building, in this peaceful, yet convenient spot

KEY FEATURES

- 2 Bedroom
- 1 Reception Room
- 2 Bathrooms
- 721 Sq ft



Notting Hill Lettings

0207 727 3227 | nottinghill@winkworth.co.uk

Winkworth

for every step...

*Tenant fees may apply. Details of tenant fees are available on the Winkworth website and the link can be found with the displayed rent for the property. Tenants should ensure they are fully conversant with any fees before making an offer to rent and your local Winkworth office can provide written details upon request.



DESCRIPTION

This impeccably redesigned two-bedroom apartment occupies the raised ground floor of a stunning, detached, period building, providing for elegant proportions throughout with excellent ceiling heights and beautiful floor to ceiling windows. To the front is spacious open plan living space over 20 feet in length with large south facing French doors on to a small balcony. The space to the rear has been perfectly designed to provide two good double bedrooms, both with excellent storage in the shape of bespoke walnut cabinetry, the master with en suite bathroom and one further shower room also. An elegant apartment thoughtfully blending contemporary touches with period detailing throughout. Available for 6 months; shorter let by separate negotiation.

Newton Road is a wonderfully peaceful street, located just behind the many shops bars and restaurants of Westbourne Grove and a short walk from the amenities and transport links of Queensway

Utilities:

Electricity – Mains

Water – Mains

Sewerage – Mains

Heating – Gas

Broadband <https://checker.ofcom.org.uk/en-gb/broadband-coverage>

Mobile Coverage <https://checker.ofcom.org.uk/en-gb/mobile-coverage>



For more information, scan the QR code or visit the link below

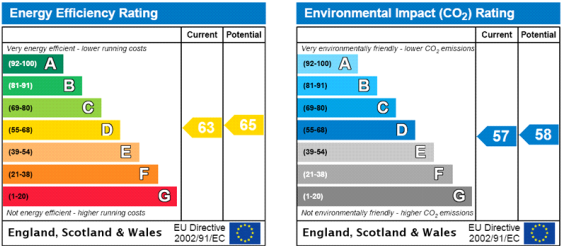


<https://www.winkworth.co.uk/rent/property/NHS250001>

Where no figures are shown, we have been unable to ascertain the information. All figures that are shown were correct at the time of printing.

MATERIAL INFO

Deposit: £7,500
Holding Deposit: £1,250
Council Tax Band: E (Westminster)

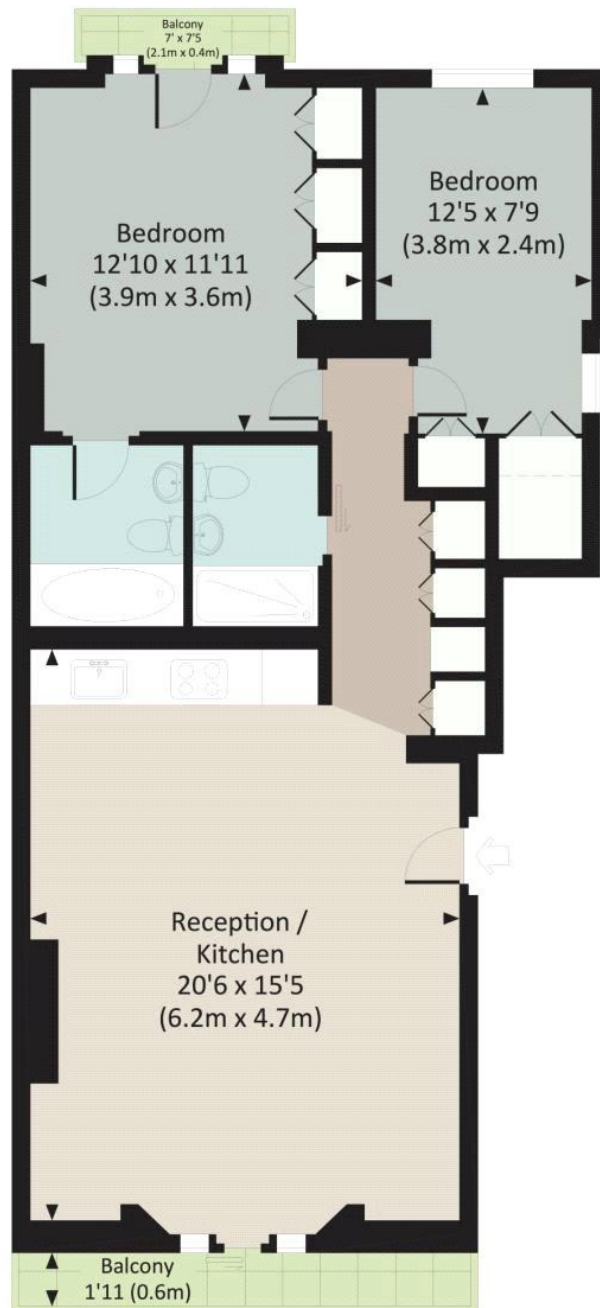


NEWTON ROAD, W2

Approx. gross internal area

711 Sq.Ft. / 66.1 Sq.M.

721 Sq.Ft. / 67.0 Sq.M. Inc. Restricted Height Area



RAISED GROUND FLOOR



All measurements have been made in accordance with RICS Code of Measuring Practice which are approximate only and only for illustrative purposes. For the avoidance of doubt, Dowling Jones Design shall not be liable for any reliance on these measurements. © 2015 www.dowlingjones.com 020 7610 9933

Notting Hill Lettings

0207 727 3227 | nottinghill@winkworth.co.uk

Winkworth

for every step...

Winkworth wishes to inform prospective buyers and tenants that these particulars are a guide and act as information only. All our details are given in good faith and believed to be correct at the time of printing but they don't form part of an offer or contract. No Winkworth employee has authority to make or give any representation or warranty in relation to this property. All fixtures and fittings, whether fitted or not are deemed removable by the vendor unless stated otherwise and room sizes are measured between internal wall surfaces, including furnishings.