

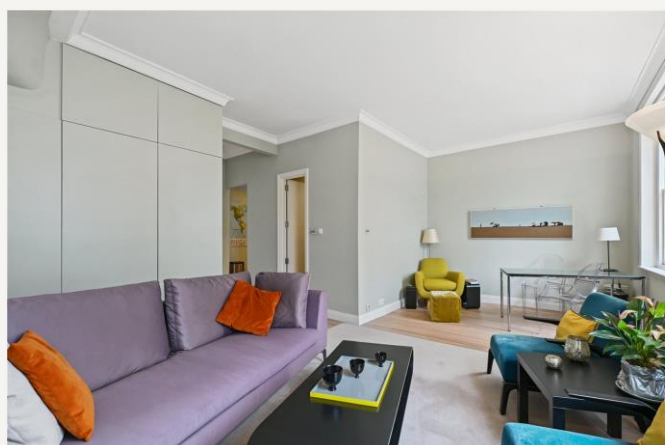


Porchester Square, W2

£695 per week (£3,011.66 PCM) *Furnished*



AN IMMACULATE AND BEAUTIFULLY PRESENTED ONE BEDROOM ON THE SECOND FLOOR OF THIS IMPRESSIVE PERIOD BUILDING CENTRALLY LOCATED WITH FANTASTIC LIGHT THROUGHOUT AND WONDERFUL LIVING SPACE.



**Notting Hill Lettings**

0207 727 3227 | [nottinghill@winkworth.co.uk](mailto:nottinghill@winkworth.co.uk)

**Winkworth**

for every step...





#### DESCRIPTION:

The property comprises of an entry hall, stunning living room with wood floors and large windows with southerly views over the communal gardens behind, separate fully fitted kitchen, immaculate bathroom with shower over bath and a very spacious double bedroom with beautiful floor to ceiling storage. The flat is offered fully furnished for short let only with utility bills included in the rent - viewing highly recommended.

#### LOCATION:

The property is located within a short walk to the beautiful setting of Hyde Park and is 5-10 minutes' walk to Bayswater Underground station (Circle and District lines), Royal Oak Underground station (Hammersmith & City and Circle lines) Queensway (Central line) and Paddington station (Bakerloo, District, Hammersmith & City, Elizabeth Line and National Rail Services).

#### Utilities:

Electricity – Mains

Water – Mains

Sewerage – Mains

Heating – Gas

Broadband <https://checker.ofcom.org.uk/en-gb/broadband-coverage>

Mobile Coverage <https://checker.ofcom.org.uk/en-gb/mobile-coverage>

#### MATERIAL INFO

**Deposit:** £3,475

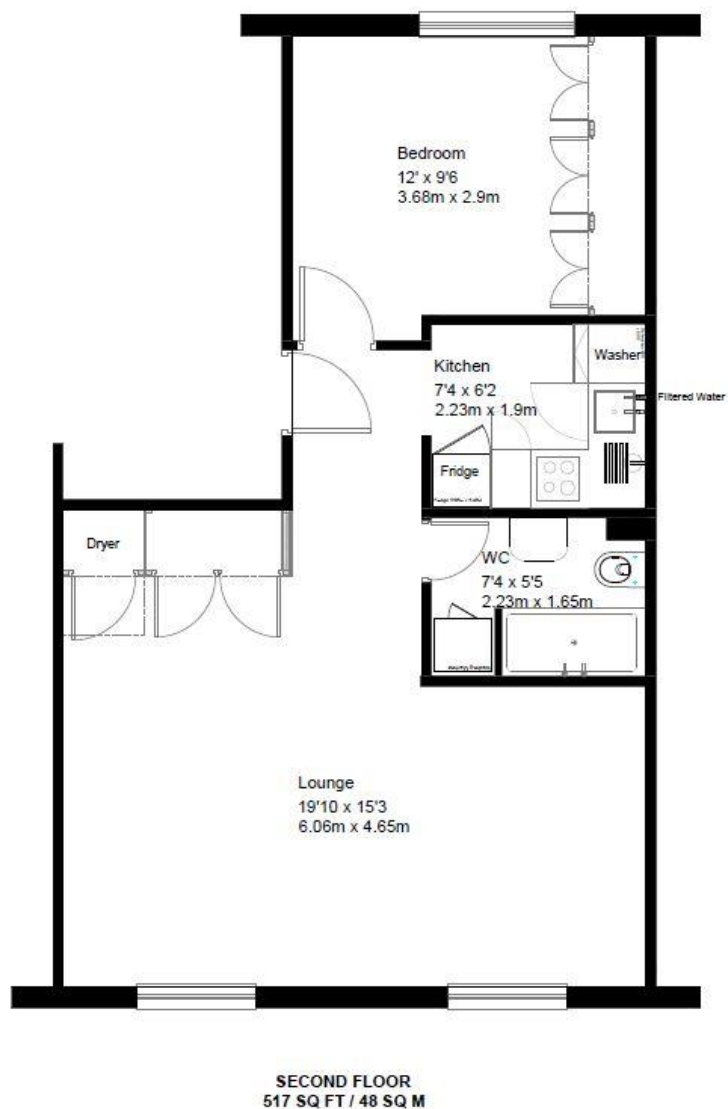
**Holding Deposit:** £695

**Council Tax Band:** D (Westminster)

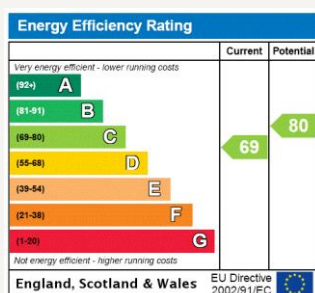








For more information, scan the QR code or visit the link below



<https://www.winkworth.co.uk/rent/property/NHS240080>

Where no figures are shown, we have been unable to ascertain the information. All figures that are shown were correct at the time of printing.

**Notting Hill Lettings**

0207 727 3227 | [nottinghill@winkworth.co.uk](mailto:nottinghill@winkworth.co.uk)

**Winkworth**

for every step...

Winkworth wishes to inform prospective buyers and tenants that these particulars are a guide and act as information only. All our details are given in good faith and believed to be correct at the time of printing but they don't form part of an offer or contract. No Winkworth employee has authority to make or give any representation or warranty in relation to this property. All fixtures and fittings, whether fitted or not are deemed removable by the vendor unless stated otherwise and room sizes are measured between internal wall surfaces, including furnishings.