



WESTBOURNE GROVE, W11
£595 PER WEEK (£2,578.33 PCM) FURNISHED

A BRIGHT AND BEAUTIFULLY PRESENTED ONE BEDROOM FLAT ON THE FIRST FLOOR OF THIS PERIOD BUILDING IN THE HEART OF NOTTING HILL.

1 Bedroom, 1 Bathroom, Period, Floor 1, Furnished, 6 Months Let

Notting Hill Lettings | 0207 727 3227 | nottinghill@winkworth.co.uk

Winkworth

for every step...

winkworth.co.uk



DESCRIPTION:

The flat benefits from a lovely living room with wood floors, high ceilings, fireplace, large sash windows, sofa bed and fully fitted open plan kitchen. The double bedroom is positioned at the back of the property together with the spacious shower room off the hallway. The property is beautifully furnished and presented throughout and located on the most sought-after part of Westbourne Grove, viewings are highly recommended. Available furnished for 6 months or shorter let by separate negotiation.

LOCATION:

Westbourne Grove runs through the heart of Notting Hill with many of the area's most fashionable boutiques and restaurants lined up along it.

ADDITIONAL INFORMATION:

Electricity – Mains

Water – Mains

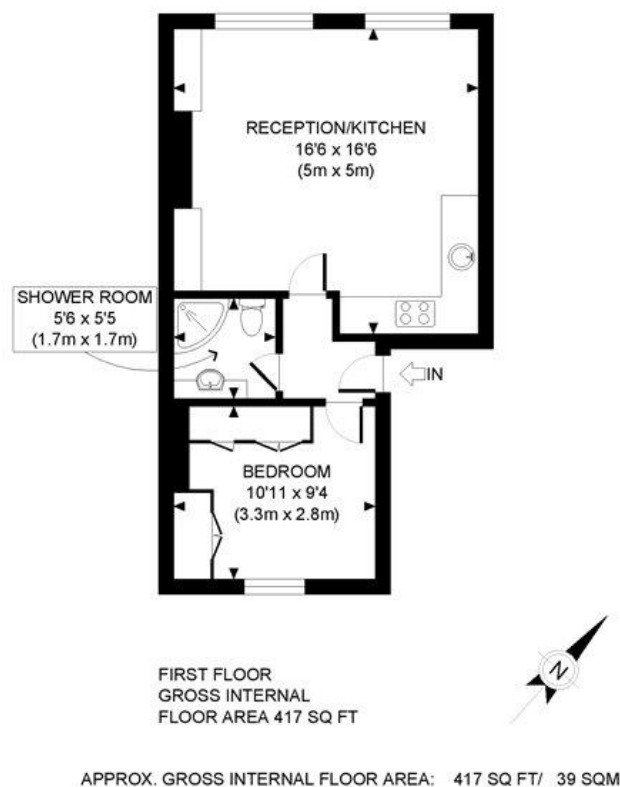
Sewerage – Mains

Heating – Gas

Broadband <https://checker.ofcom.org.uk/en-gb/broadband-coverage>

Mobile Coverage <https://checker.ofcom.org.uk/en-gb/mobile-coverage>



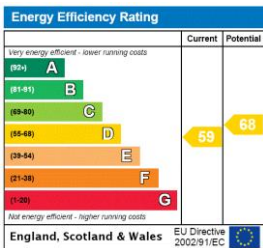


Winkworth

This plan is for illustrative purposes only and should be used as such by any prospective client. Whilst every attempt has been made to ensure the accuracy of the Floor Plan contained here, measurements of the doors, windows, rooms and any other items are approximate and no responsibility is taken for any errors, omissions, or misstatement. The services, systems and appliances shown have not been tested and no guarantee as to the operability or efficiency can be given.

PROPERTY PHOTO PLANS

This floorplan is for illustration purposes only and is not to scale. The position and size of doors, windows, appliances and other features are approximate.



Deposit: £2,975

Holding Deposit: £595

Council Tax Band: D (Royal Borough of Kensington and Chelsea)

Where no figures are shown, we have been unable to ascertain the information. All figures that are shown were correct at the time of printing.

Winkworth

for every step...

Notting Hill Lettings | 0207 727 3227 | nottinghill@winkworth.co.uk

winkworth.co.uk

Winkworth wishes to inform prospective buyers and tenants that these particulars are a guide and act as information only. All our details are given in good faith and believed to be correct at the time of printing but they don't form part of an offer or contract. No Winkworth employee has authority to make or give any representation or warranty in relation to this property. All fixtures and fittings, whether fitted or not are deemed removable by the vendor unless stated otherwise and room sizes are measured between internal wall surfaces, including furnishings.