



GATESHEAD ROAD, HERTFORDSHIRE, WD6  
**£430,000 FREEHOLD**

## A WELL PRESENTED THREE BEDROOM TUNNEL LINKED FAMILY HOUSE

Borehamwood | 020 8953 8899 | [borehamwood@winkworth.co.uk](mailto:borehamwood@winkworth.co.uk)



### DESCRIPTION:

Occupying a slightly elevated position, Just off Cowley Hill with views across Borehamwood and beyond is this three bedroom tunnel linked three bedroom family house.

Well-presented throughout the property is within walking distance of Aycliffe Park and Thirsk Cliffe Nature Park and a short bus ride from Borehamwood Town centre and Thameslink Station.

Several "Good" Ofsted rated schools including Woodlands and Cowley Hill are located nearby as well as the recently rebuilt Hertswood Academy.

### AT A GLANCE

- 3 Bedrooms
- 737 Square Feet
- Gas Central Heating
- Double Glazed
- Kitchen/Diner
- Generous Rear Garden with Sun Terrace
- Close To Schools and Open Spaces





269 Gateshead Road, Borehamwood, WD6 5LZ

Approximate Gross Internal Area = 68.5 sq m / 737 sq ft

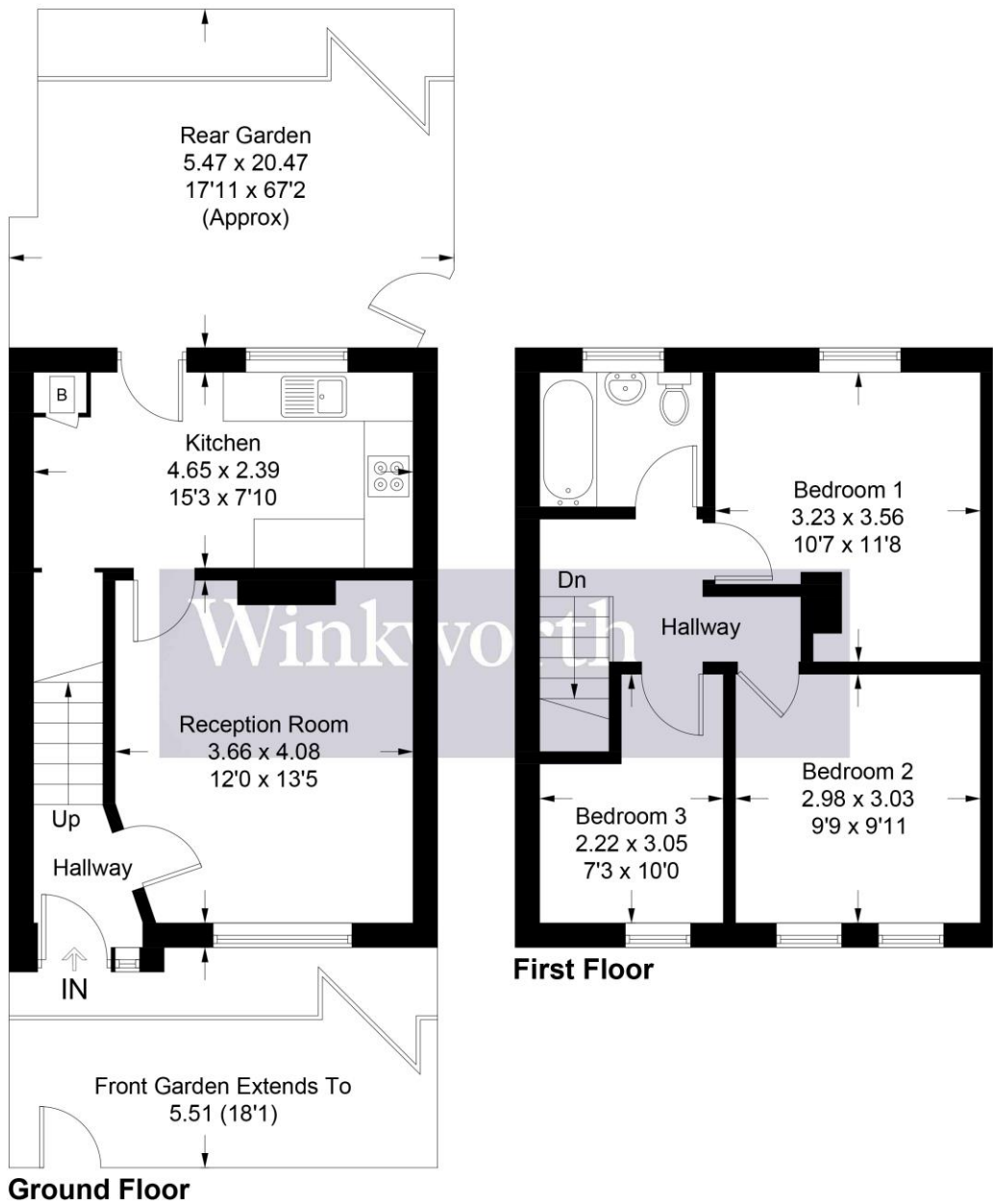


Illustration for identification purposes only, measurements are approximate, not to scale. Winkworth © 2025 (ID1199224)

This floorplan is for illustration purposes only and is not to scale. The position and size of doors, windows, appliances and other features are approximate.

Score	Energy rating	Current	Potential
92+	A		
81-91	B		
69-80	C		
55-68	D		
39-54	E		
21-38	F		
1-20	G		

Tenure: Freehold

Term: 0 year and 0 months

Service Charge: £0 per annum

Ground Rent: £ 0 Annually (subject to increase)

Council Tax Band: D

Where no figures are shown, we have been unable to ascertain the information. All figures that are shown were correct at the time of printing.