



## **COLVILLE TERRACE, W11**

**£1,050,000 SHARE OF FREEHOLD (957 YEARS REMAINING)**

**A LARGE, TWO BEDROOM, TWO BATHROOM GARDEN FLAT, IN THIS MUCH SOUGHT AFTER LOCATION WITH A FANTASTIC SOUTH FACING GARDEN.**

**2 Bedrooms, 2 Reception Rooms, 2 Bathrooms, Flat/Apartment,  
1005 Approx Sq Ft, Service Charge £1,500 p/a, Ground Rent N/A**

**Winkworth**

Notting Hill Sales | 0207 727 3227 | nottinghill@winkworth.co.uk

[winkworth.co.uk](http://winkworth.co.uk)

for every step...





### **DESCRIPTION:**

This wonderful garden flat extends to 1,005 sq.ft and is located on the ever popular and vibrant Colville Terrace. The accommodation comprises; entrance hall, open-plan kitchen dining and sitting room, two large bedrooms (one en-suite), conservatory, main bathroom and cellar. To the rear is a large, private, south facing garden currently planted with mature trees and shrubs.

### **LOCATION:**

Colville Terrace is a popular residential street running from Portobello Road to Ledbury Road, and the property is ideally located just to the east of Portobello Road, a moment's walk from its many boutiques, bars and restaurants. It is within easy walking distance of the many transport connections of Notting Hill Gate.

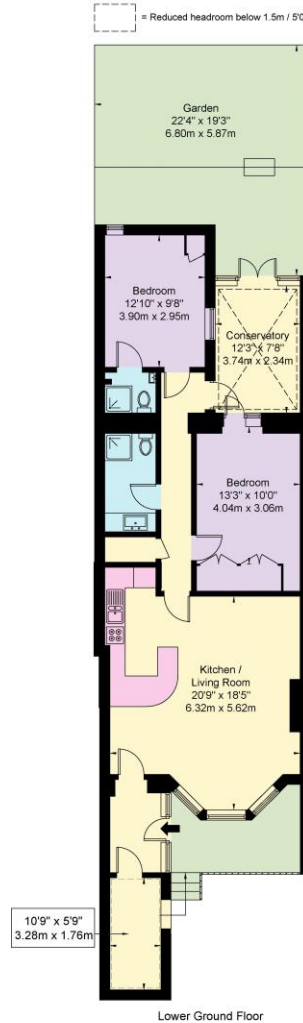
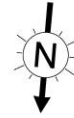
### **LOCAL AUTHORITY AND COUNCIL TAX BAND:**

Royal Borough of Kensington and Chelsea (Band F)



# Colville Terrace W11 2BE

Approx. Gross Internal Area = 93.4 sq m / 1005 sq ft  
 Reduced Headroom = 4.9 sq m / 52 sq ft  
 Total = 98.3 sq m / 1057 sq ft



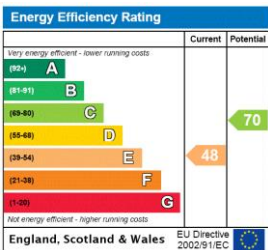
Lower Ground Floor

Ref

Copyright **BLEUPLAN**

The Floor plan is not to scale and measurements and areas shown are approximate and therefore should be used for illustrative purposes only. The plan has been prepared in accordance with the RICS code of Measuring Practice and whilst we have confidence in the information produced it must not be relied on. If there is any aspect of particular importance, you should carry out or commission your own inspection of the property.  
 Copyright @ BLEUPLAN

This floorplan is for illustration purposes only and is not to scale. The position and size of doors, windows, appliances and other features are approximate.



Notting Hill Sales | 0207 727 3227 | nottinghill@winkworth.co.uk



winkworth.co.uk

for every step...

winkworth wishes to inform prospective buyers and tenants that these particulars are a guide and act as information only. All our details are given in good faith and believed to be correct at the time of printing but they don't form part of an offer or contract. No Winkworth employee has authority to make or give any representation or warranty in relation to this property. All fixtures and fittings, whether fitted or not are deemed removable by the vendor unless stated otherwise and room sizes are measured between internal wall surfaces, including furnishings.