



HOLLYDALE ROAD, NUNHEAD, SE15
£850,000 FREEHOLD

A CHARMING AND MUCH-LOVED VICTORIAN
THREE BEDROOMED HOME, SITUATED IN A
HIGHLY SOUGHT AFTER LOCATION IN SE15.

Dulwich | 020 8299 2722 | dulwich@winkworth.co.uk

Winkworth

winkworth.co.uk

See things differently



DESCRIPTION:

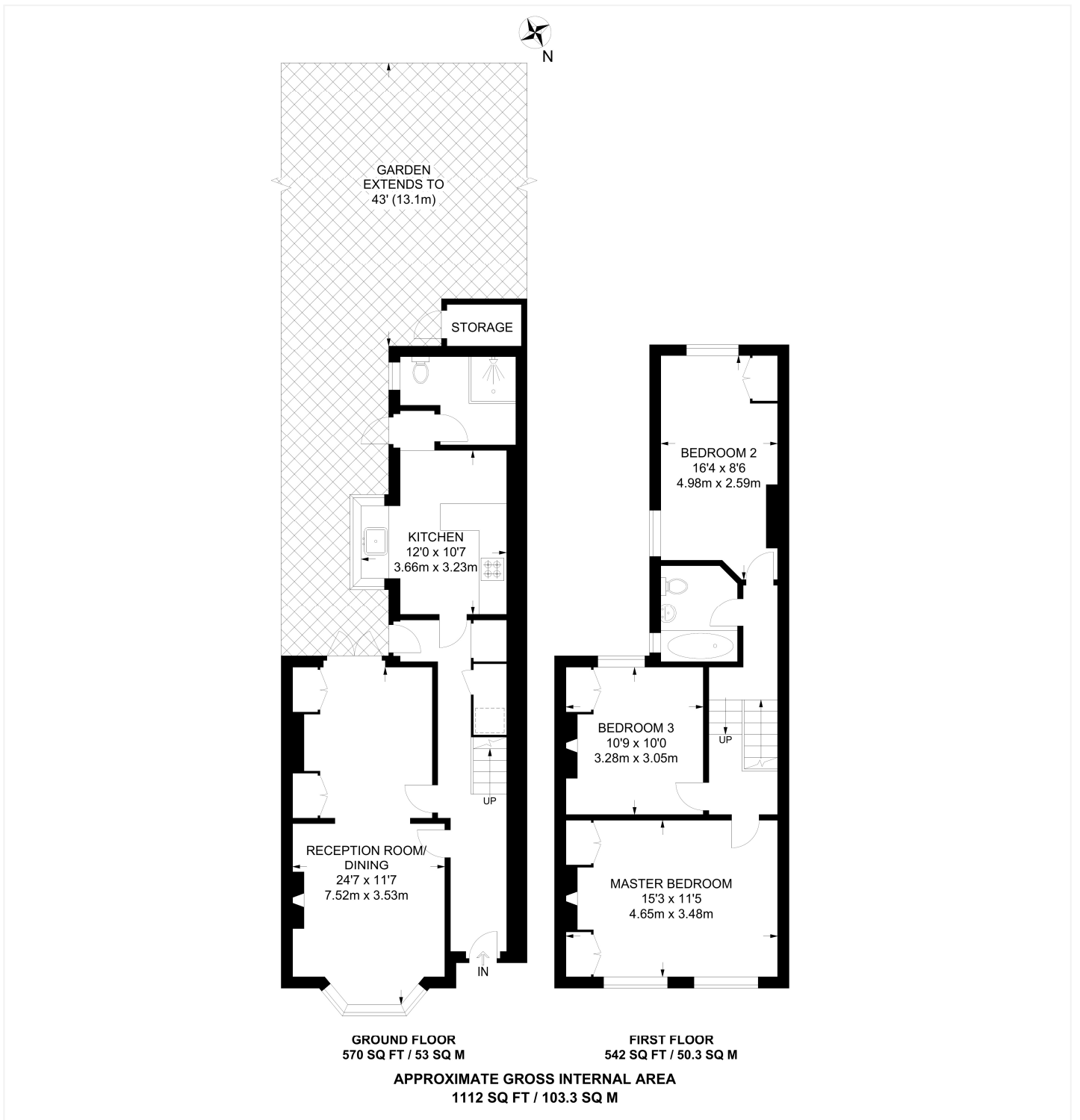
A charming and much-loved Victorian home, situated in a highly sought after location in SE15. This lovely, terraced home is offered to the market chain free. Comprising a spacious double reception with wooden floorboards and high ceilings. The kitchen is fully fitted, comprising built in appliances, breakfast bar and ample storage. The kitchen benefits from a bay window that allows in lots of light whilst giving a pleasant view of the mature gardens. The ground floor further comprises a downstairs WC and shower room. The first floor comprises three spacious double bedrooms and a recently refurbished family bathroom with underfloor heating. All three bedrooms boasting built in wardrobes. There is potential to extend in to the loft, side return and rear STPP. The property offers the most fantastic mature garden with mature shrubs and an apple tree. The location offers fantastic access to Nunhead, Peckham Rye, Brockley and everything this stunning area has to offer. Nunhead Lane and Rye Lane are within a short walking, offering an impressive array of shops, bars and restaurants. Transport links are provided via Queens Road for the Thames Link, Nunhead station for direct links to London Victoria and Peckham Rye for the overground.

AT A GLANCE

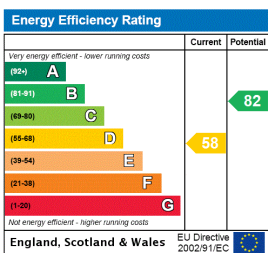
- Three Double Bedrooms
- Terraced House
- Two Receptions
- Modern Kitchen
- Bathroom & Shower Room
- Front and Rear Garden
- Central Location
- Chain Free







This floorplan is for illustration purposes only and is not to scale. The position and size of doors, windows, appliances and other features are approximate.



Dulwich | 020 8299 2722 | dulwich@winkworth.co.uk



winkworth.co.uk

See things differently

Winkworth wishes to inform prospective buyers and tenants that these particulars are a guide and act as information only. All our details are given in good faith and believed to be correct at the time of printing but they don't form part of an offer or contract. No Winkworth employee has authority to make or give any representation or warranty in relation to this property. All fixtures and fittings, whether fitted or not are deemed removable by the vendor unless stated otherwise and room sizes are measured between internal wall surfaces, including furnishings.