



HEATHFIELD GARDENS, NW11
£585,000 SHARE OF FREEHOLD

A DELIGHTFUL 2 BEDROOM 2 BATHROOM 1ST FLOOR APARTMENT

Golders Green | 020 8458 8313 | goldersgreen@winkworth.co.uk

2 DOUBLE BEDROOM/ 2 BATHROOMS/ 1ST FLOOR CONVERSION
MODERN FITTED KITCHEN/ OFF STREET PARKING/ WELL MAINTAINED
EPC RATING: D / COUNCIL TAX BAND: D



DESCRIPTION:

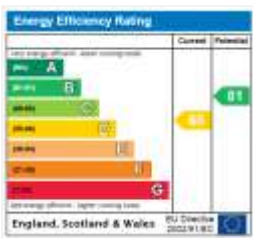
We are delighted to offer this very spacious, 2 bedroom 2 bathroom 1st floor apartment in a popular residential road close to Golders Green and Brent Cross.

The flat is just 1 of 3 flats in the building which is well maintained and each flat owns a share of freehold. Heathfield Gardens is located off Highfield Avenue and has direct access to Brent Cross Tube Station.

The flat is in excellent decorative order throughout and benefits from a large living room with a separate fully fitted kitchen and 2 bathrooms (1 en-suite to the Master bedroom). There is a spacious entrance hallway and an additional storage cupboard on the ground floor. The overall size of the flat is in excess of 70 sq metres (over 750 sq feet).

There is a private parking space on the driveway to the front of the house. This is a charming, well equipped modern conversion with low outgoings and a share of freehold in excellent condition.

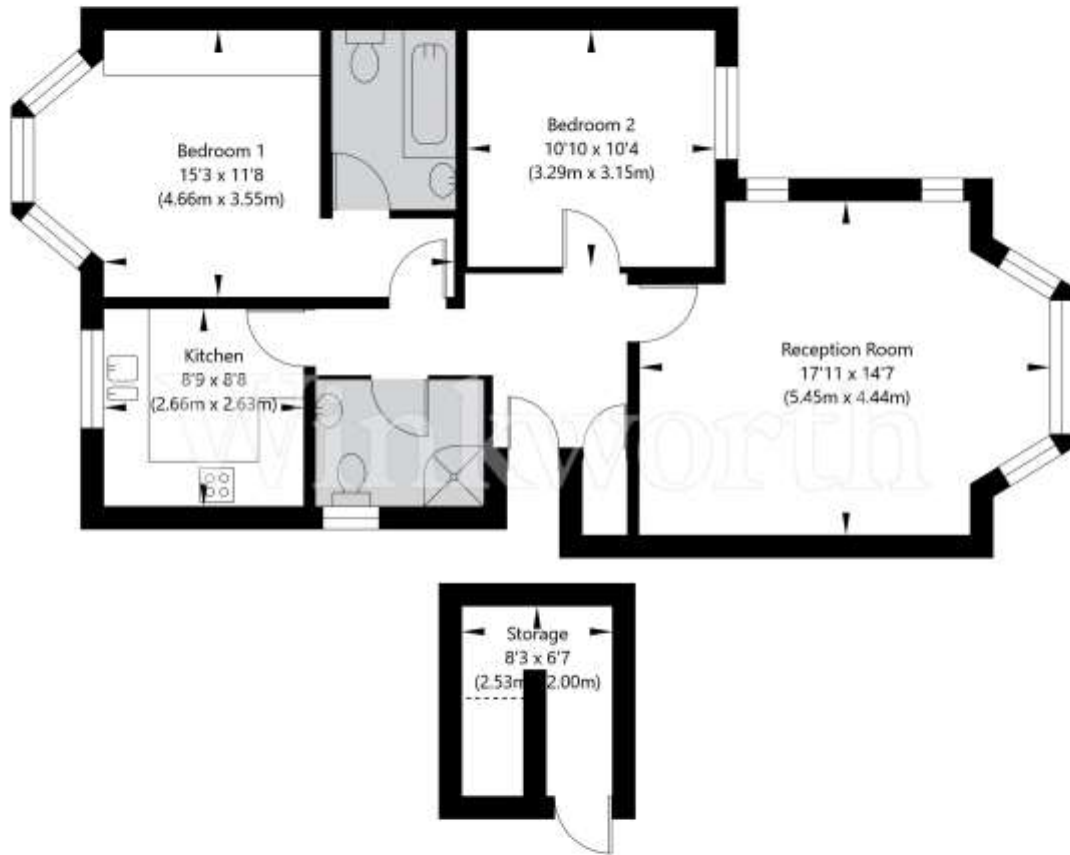
Viewing is highly recommended.





Heathfield Gardens, London, NW11 9HY

First Floor
GROSS INTERNAL FLOOR AREA
APPROX. 70.41 SQ M / 758 SQ FT



APPROXIMATE GROSS INTERNAL FLOOR AREA 70.41 SQ M / 758 SQ FT
THIS FLOOR PLAN IS FOR ILLUSTRATIVE PURPOSES ONLY AND
SHOULD BE USED FOR THIS PURPOSE BY PROSPECTIVE APPLICANTS AS ITS NOT TO SCALE.

(c) AMBERSHORE PIX LIMITED / PHOTO - VIDEO - FLOOR PLANS / 0800 999 1577 / WWW.AMBERSHOREPIX.CO.UK