



OAKLEY STREET, NORTHAMPTONSHIRE, NN1  
OIEO £200,000 FREEHOLD

Winkworth



## OAKLEY STREET, NORTHAMPTONSHIRE, NN1

A three bedroom HMO located in the Mounts area of Northampton.

The accommodation comprises of two reception rooms on the ground floor, where the front reception is utilised as a bedroom. A communal lounge/dining area has doors that lead out to the rear garden and an opening that leads into the kitchen. From the kitchen a door leads to the three piece bathroom suite.

On the first floor there are three further bedrooms, two of which are rented out. The bedroom at the rear is currently not utilised as a bedroom.

Room 1 – rent £500: First Floor Middle Bedroom

Room 2 (currently double occupancy) - £700 First Floor Front

Room 3 – £508 Ground Floor

Externally to the rear there is a small enclosed rear garden.



Council tax band 'A'

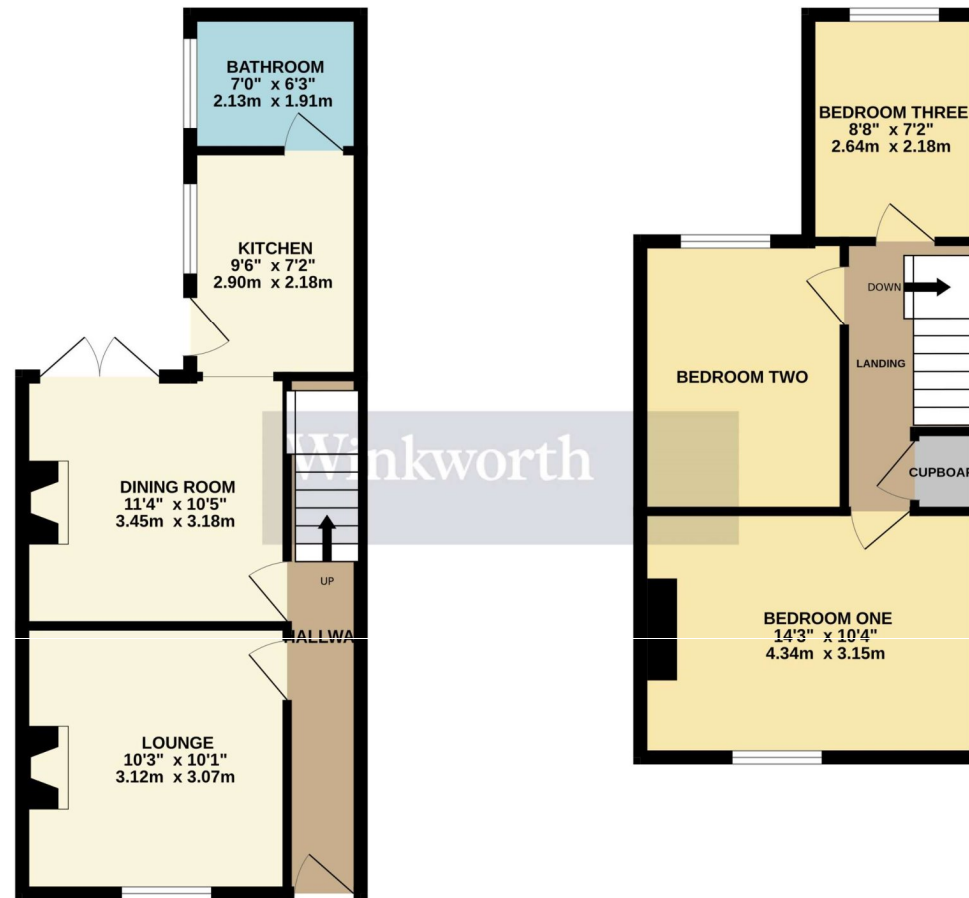
EPC band 'D'





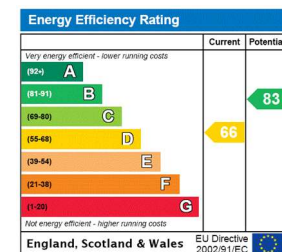
GROUND FLOOR  
405 sq.ft. (37.6 sq.m.) approx.

1ST FLOOR  
370 sq.ft. (34.4 sq.m.) approx.



TOTAL FLOOR AREA: 775 sq.ft. (72.0 sq.m.) approx.

Whilst every attempt has been made to ensure the accuracy of the floorplan contained here, measurements of doors, windows, rooms and any other items are approximate and no responsibility is taken for any error, omission or mis-statement. This plan is for illustrative purposes only and should be used as such by any prospective purchaser. The services, systems and appliances shown have not been tested and no guarantee as to their operability or efficiency can be given.  
Made with Metropix ©2024



Northampton | 01604 204455 | northampton@winkworth.co.uk

winkworth.co.uk

Winkworth wishes to inform prospective buyers and tenants that these particulars are a guide and act as information only. All our details are given in good faith and believed to be correct at the time of printing but they don't form part of an offer or contract. No Winkworth employee has authority to make or give any representation or warranty in relation to this property. All fixtures and fittings, whether fitted or not are deemed removable by the vendor unless stated otherwise and room sizes are measured between internal wall surfaces, including furnishings.

