



PALLISER HOUSE, GREENWICH, LONDON, SE10  
**£369,950 LEASEHOLD**

**A WELL PRESENTED TWO BEDROOM 3RD (TOP) FLOOR FLAT THAT MEASURES CIRCA 634 SQ FT AND LOCATED JUST A FEW MOMENTS AWAY FROM THE ROYAL PARK AND THE TOWN CENTRE!**

Greenwich | 02030533033 | [greenwich@winkworth.co.uk](mailto:greenwich@winkworth.co.uk)

**Winkworth**

*[winkworth.co.uk](http://winkworth.co.uk)*

See things differently



## DESCRIPTION:

A well presented two bedroom 3rd (top) floor flat that measures circa 634 sq ft and located just a few moments away from the Royal Park and the town centre!

Whilst the property is in good order it would certainly benefit from an update. The property comprises a 14ft reception that leads onto a south facing balcony. The kitchen is in good condition and well equipped. There are two double bedrooms and a modern bathroom. There are pretty views toward the old Naval College to the rear and a communal garden. The flat also has a private shed within the gardens, which could be ideal for bike storage etc.

As mentioned, the property is particularly well located, just on the cusp of east and west Greenwich. This means it has perfect access to all local amenities, including the wide array of shops and restaurants in the town centre, along with mainline rail at Maze Hill, DLR and riverboat service. The river walk is also just round the corner. In our opinion this property would make a fantastic BUY TO LET investment!

## AT A GLANCE

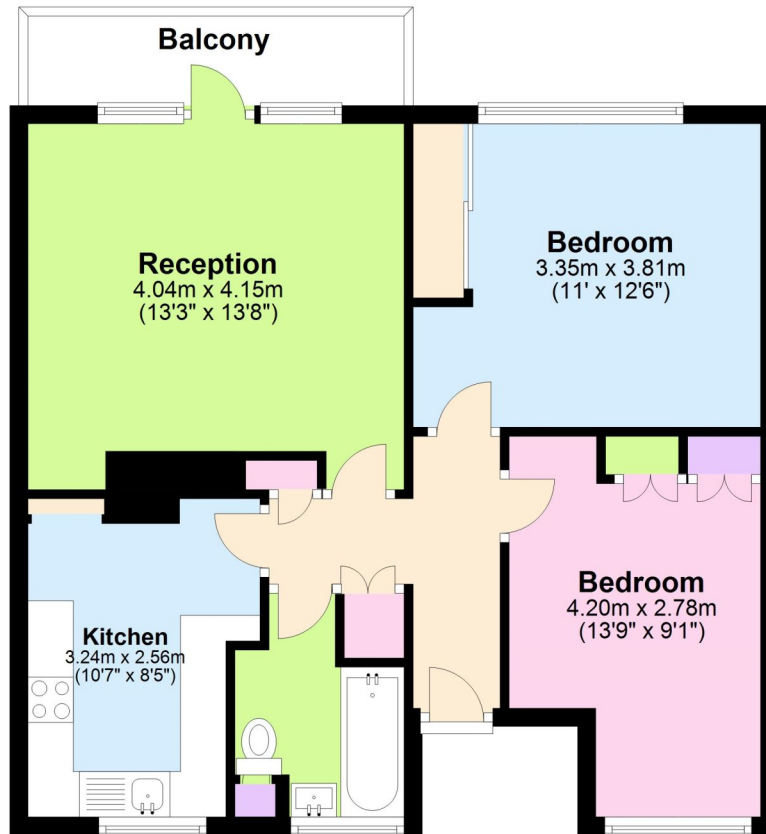
- two bedroom flat
- top floor (3rd)
- circa 634 sq ft
- lovely views to rear
- well fitted kitchen
- double glazed
- balcony
- fitted wardrobes
- moments from Royal Park
- close to town centre





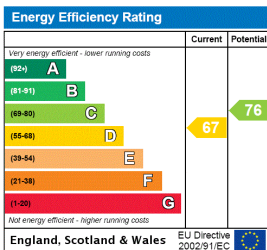
### Third Floor

Approx. 58.9 sq. metres (634.3 sq. feet)



Total area: approx. 58.9 sq. metres (634.3 sq. feet)

This floorplan is for illustration purposes only and is not to scale. The position and size of doors, windows, appliances and other features are approximate.



Greenwich | 02030533033 | greenwich@winkworth.co.uk

**Winkworth**

*winkworth.co.uk*

See things differently

Winkworth wishes to inform prospective buyers and tenants that these particulars are a guide and act as information only. All our details are given in good faith and believed to be correct at the time of printing but they don't form part of an offer or contract. No Winkworth employee has authority to make or give any representation or warranty in relation to this property. All fixtures and fittings, whether fitted or not are deemed removable by the vendor unless stated otherwise and room sizes are measured between internal wall surfaces, including furnishings.