



THE MEAD, LONDON, N2
£550,000 FREEHOLD

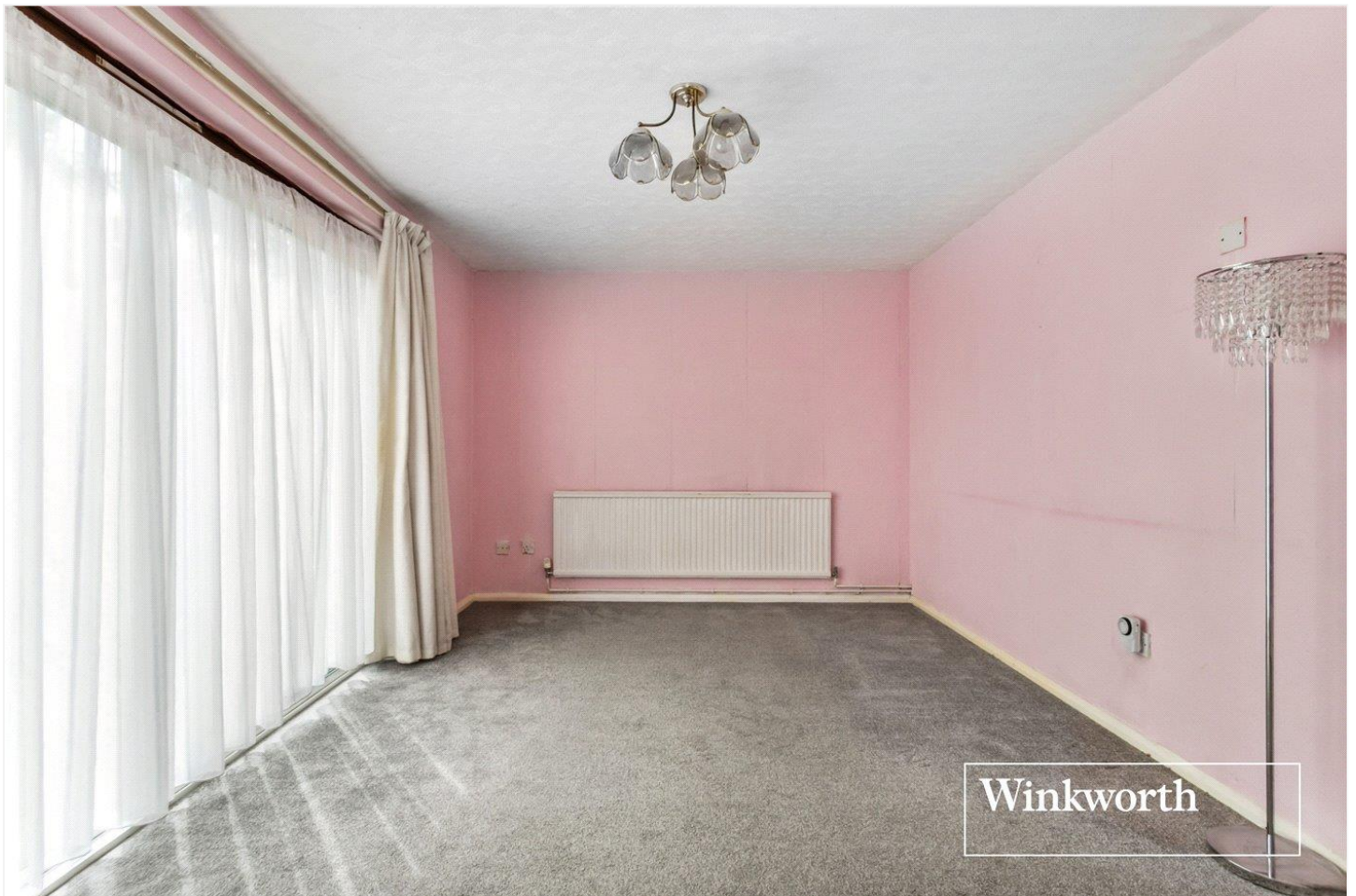
A THREE BEDROOM, MID TERRACE, FAMILY HOME WITH POTENTIAL TO EXTEND STPP.

Finchley | 020 8349 3388 | finchley@winkworth.co.uk

Winkworth

for every step...

winkworth.co.uk



DESCRIPTION:

We are pleased to offer a terraced family home, located within a mile of both East Finchley & Finchley Central amenities, transport links and good Ofsted rated schools.

The property is comprised of an eat in kitchen, spacious reception room overlooking a private rear garden, three bedrooms and family bathroom.

The property has potential to extend on the ground floor, stpp, and would be an ideal family home. It is being offered on a chain free basis. An internal viewing is highly recommended.

AT A GLANCE

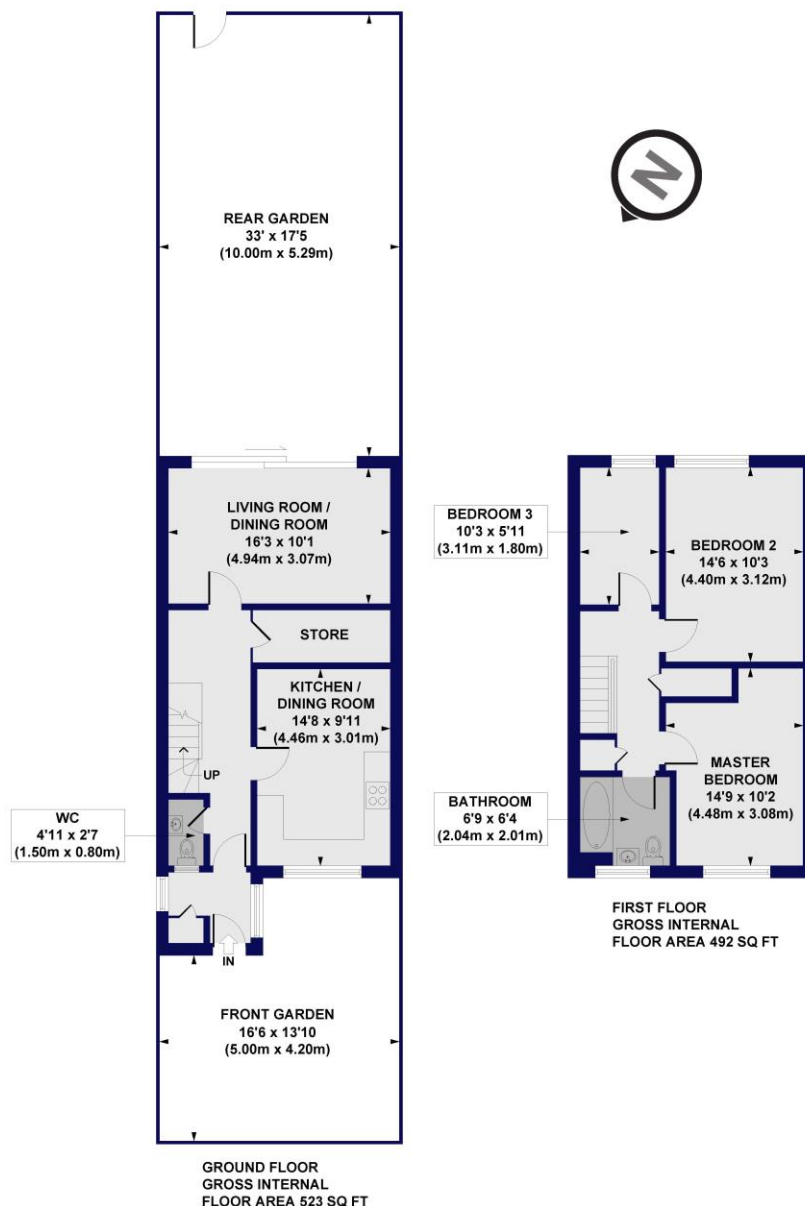
- Terraced family home
- Located between East Finchley & Finchley Central
- Eat in kitchen
- Spacious reception room
- Three bedrooms
- Private garden
- Chain free
- Downstairs cloakroom





The Mead, N2

Approx. Gross Internal Floor Area 1016 sq.ft / 94.35 sq. m



All measurements of walls, doors, windows, fittings and appliances, including their size and location, are shown as standard sizes and do not constitute any warranty or representation by the seller, their agent or CP Creative. Any intending purchaser must satisfy himself by inspection or otherwise as to the correctness of the information contained in these plans. This plan is for illustrative purposes only and should be used as such by any prospective purchasers.

Winkworth

This floorplan is for illustration purposes only and is not to scale. The position and size of doors, windows, appliances and other features are approximate.

Tenure: Freehold

Council Tax Band: C

Where no figures are shown, we have been unable to ascertain the information. All figures that are shown were correct at the time of printing.

Score	Energy rating	Current	Potential
92+	A		90 B
81-91	B		
69-80	C	75 C	
55-68	D		
39-54	E		
21-38	F		
1-20	G		

Finchley | 020 8349 3388 | finchley@winkworth.co.uk

winkworth.co.uk

Winkworth wishes to inform prospective buyers and tenants that these particulars are a guide and act as information only. All our details are given in good faith and believed to be correct at the time of printing but they don't form part of an offer or contract. No Winkworth employee has authority to make or give any representation or warranty in relation to this property. All fixtures and fittings, whether fitted or not are deemed removable by the vendor unless stated otherwise and room sizes are measured between internal wall surfaces, including furnishings.

Winkworth

for every step...