



Church Terrace, SE13

£2,250 per month *Furnished*



An impressive and vast one bedroom flat found on the first floor of this beautiful period house situated just a short walk from Blackheath Village and station. Furnished to a high standard and available from 30th March 2026

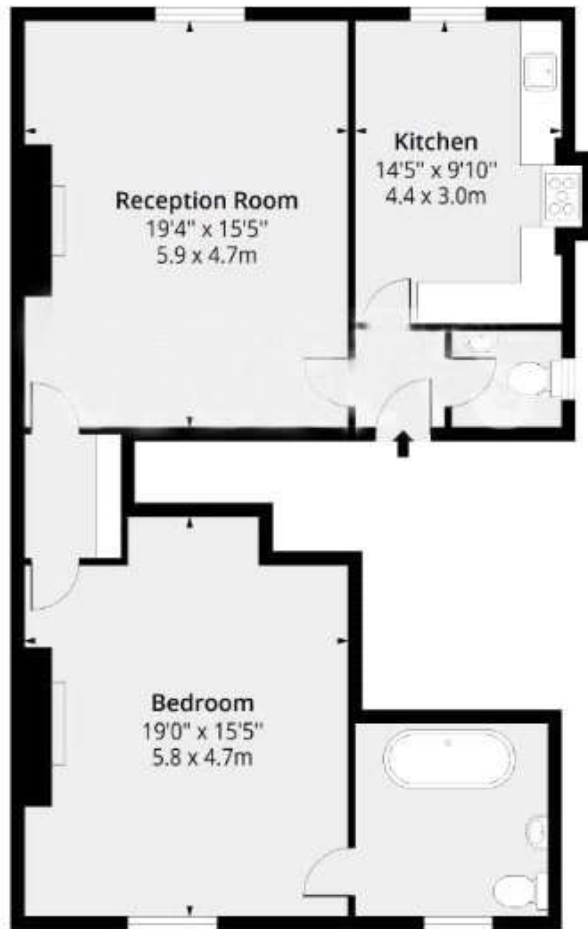


Blackheath

0208 8520999 | blackheath@winkworth.co.uk

Church Terrace, SE13

Approx. Gross Internal Area 889 Sq Ft - 82.59 Sq M



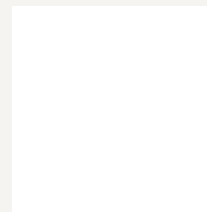
First Floor

Floor Area 889 Sq Ft - 82.59 Sq M

MATERIAL INFO

For more information, scan the QR code or visit the link below

Deposit: £2,596.15
Holding Deposit:
Council Tax Band: D
EPC rating: D



<https://www.winkworth.co.uk/rent/property/BLA120622>

Where no figures are shown, we have been unable to ascertain the information. All figures that are shown were correct at the time of printing.

Blackheath

0208 8520999 | blackheath@winkworth.co.uk