



## GREYHOUND ROAD, W14

### £300,000 LEASEHOLD

A well-presented spacious ground floor studio flat in a modern building spanning 375sqft on Greyhound Road in Jubilee Mansions.

Fulham & Parsons Green | 020 7731 3388 | [fulham@winkworth.co.uk](mailto:fulham@winkworth.co.uk)

**Winkworth**

for every step...

[winkworth.co.uk](http://winkworth.co.uk)



## DESCRIPTION:

The property was built in 2012 and is sold with a long lease and is also offered to the market chain free. The flat enjoys plenty of natural light and is good decorative order throughout. It is an excellent option for an investor, first time buyer or someone looking for a pied a terre.

Jubilee Mansions is located in the heart of Barons Court and is a short walk from both West Kensington (District line) and Barons Court tube stations (Piccadilly and District). The property is located around the corner from Queens Club as well as being close to local amenities, an excellent butcher and two very popular local pubs.

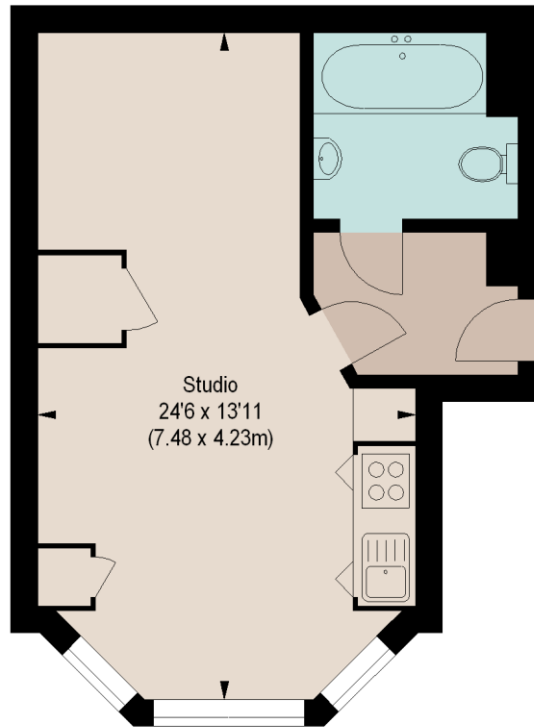
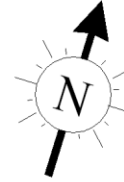






# JUBILEE MANSIONS, W14

Approximate gross internal area  
376 sq ft / 34.93 sq m



## GROUND FLOOR

The floor plan is not to scale and measurements and areas shown are approximate and therefore should be used for illustrative purposes only. The plan has been prepared in accordance with the RICS code of Measuring Practice and whilst we have confidence in the information produced, it must not be relied on. If there is any aspect of particular importance, you should carry out or commission your own inspection of the property. Copyright of FeaturePRO.

This floorplan is for illustration purposes only and is not to scale. The position and size of doors, windows, appliances and other features are approximate.

| Energy Efficiency Rating                          |         |           |
|---|---------|-----------|
|   | Current | Potential |
| Very energy efficient - lower running costs       |         |           |
| A (92-100)  |         |           |
| B (81-91)   |         |           |
| C (69-80)   | 80      | 80        |
| D (55-68)   |         |           |
| E (39-54)   |         |           |
| F (21-38)   |         |           |
| G (1-20)  |         |           |
| Not energy efficient - higher running costs       |         |           |
| England, Scotland & Wales EU Directive 2002/91/EC |         |           |

# Winkworth

Fulham & Parsons Green | 020 7731 3388 | [fulham@winkworth.co.uk](mailto:fulham@winkworth.co.uk)

for every step...

[winkworth.co.uk](http://winkworth.co.uk)

Winkworth wishes to inform prospective buyers and tenants that these particulars are a guide and act as information only. All our details are given in good faith and believed to be correct at the time of printing but they don't form part of an offer or contract. No Winkworth employee has authority to make or give any representation or warranty in relation to this property. All fixtures and fittings, whether fitted or not are deemed removable by the vendor unless stated otherwise and room sizes are measured between internal wall surfaces, including furnishings.