



CAMDEN HILL ROAD, CRYSTAL PALACE, LONDON, SE19
£1,550 PER MONTH UNFURNISHED

ONE BEDROOM VICTORIAN CONVERSION FLAT WITH PRIVATE COURTYARD.

Crystal Palace | 02038693222 | crystalpalace@winkworth.co.uk

Winkworth

for every step...

winkworth.co.uk



DESCRIPTION:

Winkworth is pleased to offer this bright & airy one-bedroom lower ground flat to rent in the heart of Crystal Palace.

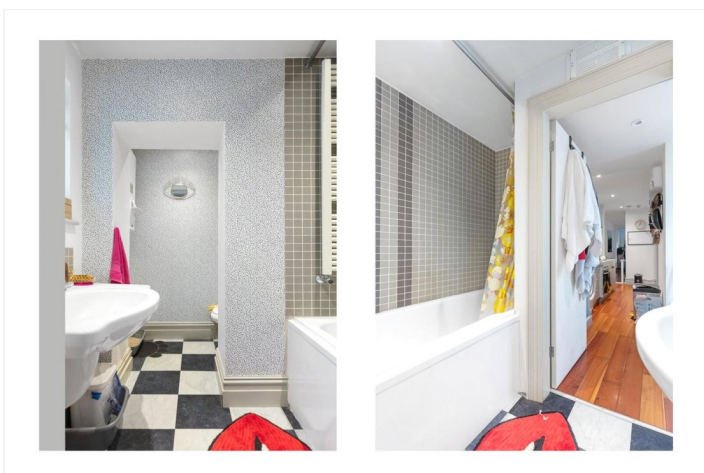
Situated in a Victorian conversion the property comprises entrance hallway, spacious reception with bay window allowing for an abundance of natural light, separate contemporary galley kitchen, bedroom and modern bathroom.

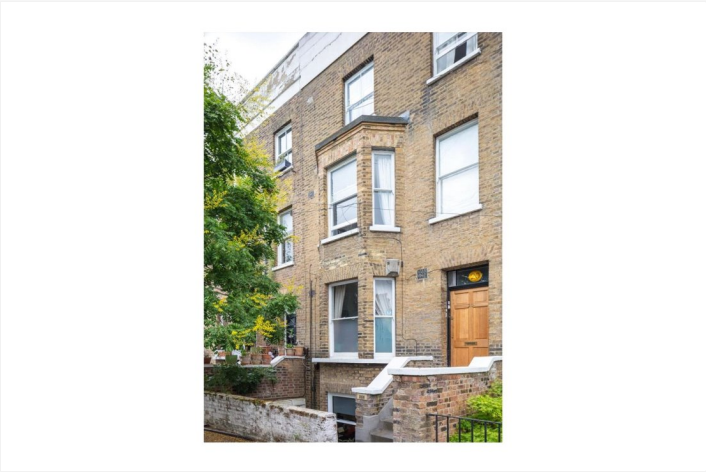
The property benefits from having a private entrance and courtyard garden. It is offered unfurnished & available mid-September.

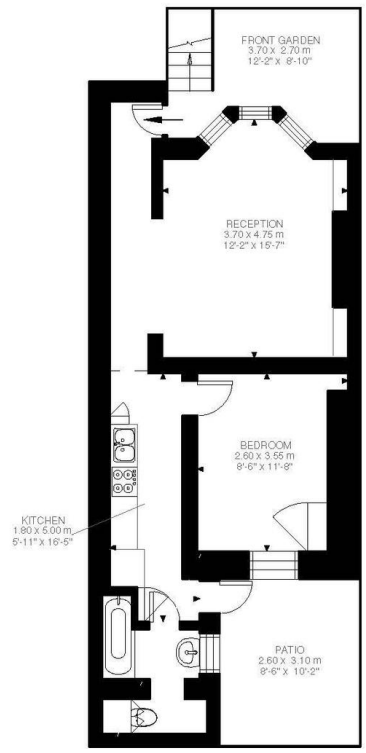
The property is ideally located only a short walk to Crystal Palace Tringle which offers a vast array of independent shops, cafes, bars & restaurants. Gipsy Hill & Crystal Palace Station are both within easy reach.

AT A GLANCE

- One Bedroom Flat
- Lower Ground Floor
- Bright & Airy
- Modern Finish Throughout
- Separate Kitchen
- Courtyard Garden
- Unfurnished
- Available mid-September





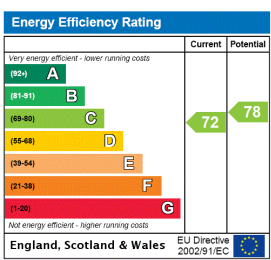


Lower Ground Floor
530 ft²

Camden Hill Road, SE19
Approximate Gross Internal Area
49.22 SQ.M / 530 SQ.FT

Illustration for identification purposes only. Not to scale.
Floor Plan Drawn According To RICS Guidelines.

This floorplan is for illustration purposes only and is not to scale. The position and size of doors, windows, appliances and other features are approximate.



Deposit: £0.00

Holding Deposit:

Council Tax Band: C

Where no figures are shown, we have been unable to ascertain the information. All figures that are shown were correct at the time of printing.



for every step...

Crystal Palace | 02038693222 | crystalpalace@winkworth.co.uk

winkworth.co.uk

Winkworth wishes to inform prospective buyers and tenants that these particulars are a guide and act as information only. All our details are given in good faith and believed to be correct at the time of printing but they don't form part of an offer or contract. No Winkworth employee has authority to make or give any representation or warranty in relation to this property. All fixtures and fittings, whether fitted or not are deemed removable by the vendor unless stated otherwise and room sizes are measured between internal wall surfaces, including furnishings.