



Leamington Road Villas, W11

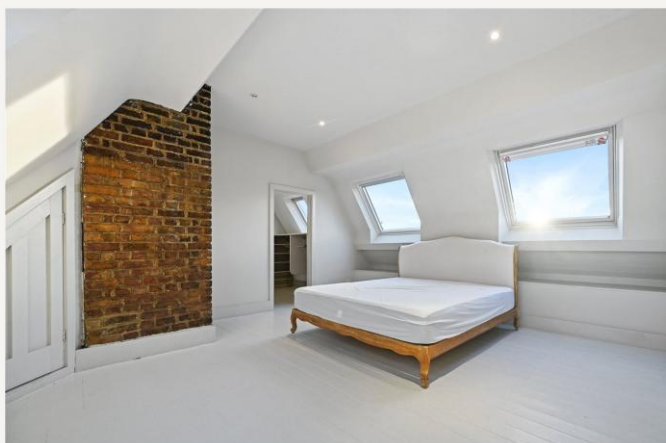
£995 per week (£4,311.66 PCM) *Unfurnished*



A STUNNING AND IMMACULATE THREE BEDROOM FLAT ON THE SECOND AND THIRD FLOORS OF THIS IMPRESSIVE PERIOD BUILDING

KEY FEATURES

- 3 Bedrooms
- 1 Reception Room
- 2 Bathroom
- 1615 Sq Ft
- Maisonette



Notting Hill Lettings

0207 727 3227 | nottinghill@winkworth.co.uk

Winkworth

for every step...



A stunning three-bedroom flat on the second and third floors of this impressive period building which was formally the old vicarage. The flat comprises: beautifully proportioned reception room with fantastically high ceilings, fully fitted kitchen, two bedrooms both with storage and a separate utility room. Occupying the top floor is a lovely master bedroom with en suite bathroom and walk in wardrobe. The flat is available part furnished and viewings are highly recommended. No HMO license.

Leamington Road Villas is a peaceful, tree lined street running north from Westbourne Park Road, just round the corner from Westbourne Park underground station and a short stroll from Ledbury Road, Westbourne Grove and many of Notting Hill's most popular bars and restaurants.

Utilities:

Electricity – Mains

Water – Mains

Sewerage – Mains

Heating – Gas

Broadband <https://checker.ofcom.org.uk/en-gb/broadband-coverage>

Mobile Coverage <https://checker.ofcom.org.uk/en-gb/mobile-coverage>

MATERIAL INFO

Deposit: £4,975

Holding Deposit: £995

Council Tax Band: G (Westminster)





54 LEAMINGTON ROAD VILLAS, W11

Approx. Gross Internal Area *

1615 Ft² - 150.03 M²

Illustration For Identification Purposes Only, Not to Scale

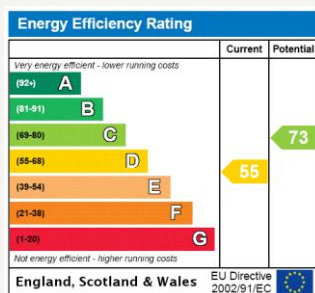
* As Defined by RICS - Code of Measuring Practice



BKR
FLOORPLANS

www.bkrfloorplans.co.uk
T: 0845 257 2023
2019

For more information, scan the QR code or visit the link below



<https://www.winkworth.co.uk/rent/property/NHL090253>

Where no figures are shown, we have been unable to ascertain the information. All figures that are shown were correct at the time of printing.

Notting Hill Lettings

0207 727 3227 | nottinghill@winkworth.co.uk

Winkworth

for every step...

Winkworth wishes to inform prospective buyers and tenants that these particulars are a guide and act as information only. All our details are given in good faith and believed to be correct at the time of printing but they don't form part of an offer or contract. No Winkworth employee has authority to make or give any representation or warranty in relation to this property. All fixtures and fittings, whether fitted or not are deemed removable by the vendor unless stated otherwise and room sizes are measured between internal wall surfaces, including furnishings.