



DUDLEY COURT, ENDELL STREET, LONDON, WC2H
£995,000 LEASEHOLD

A SPACIOUS TWO BEDROOM, FOURTH/FIFTH FLOOR MAISONETTE WITH PRIVATE BALCONIES, LIFT ACCESS AND BEAUTIFUL COMMUNAL GARDENS, IN THE HEART OF COVENT GARDEN.

Lease 90 years.
Service charge is 2200 approx. to include heating and hot water and caretaker.
Ground rent 10 p/a.
Council tax is Band E.

West End | 020 7240 3322 | westend@winkworth.co.uk

Winkworth

for every step...

winkworth.co.uk



DESCRIPTION:

The block is ex council and has well maintained communal parts. The flat itself is spacious and well maintained inside, giving great light and a feeling of comfort. The property has great views over the gardens and the outdoor pool of the Oasis fitness club which is close by. Endell street is full of shops, restaurants and cafes. Both Holborn and Tottenham Court Road Tube Stations are close by as well as the piazza of Covent Garden being a stone throw away. LSE and UCL and Kings College are all within walking distance.

Lease 90 years.

Service charge is 2200 approx. to include heating and hot water and caretaker.

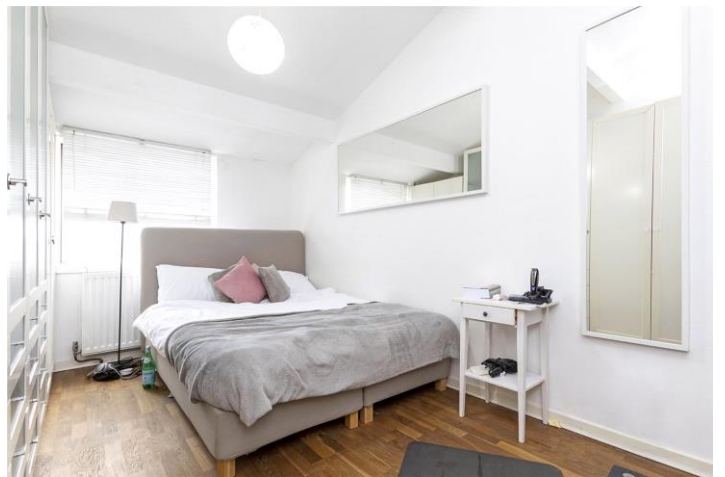
Ground rent 10 p/a.

Council tax is Band E.



Winkworth

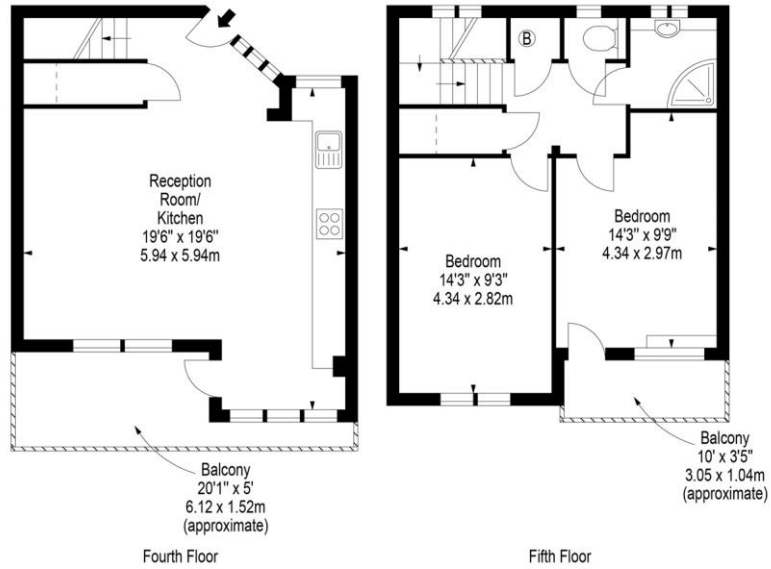
for every step...



Winkworth

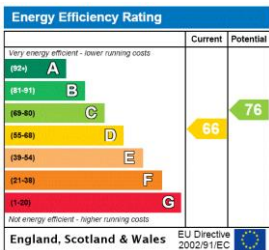
for every step...

Dudley Court,
36 Endell Street,
London, WC2



Fourth Floor
Fifth Floor
Approx Gross Internal Area **792 Sq Ft - 73.58 Sq M**
Floor Plan Supplied For Identification Purposes Only And May Not Be Accurate
Floor Plan by www.elegantmediasolution.com

This floorplan is for illustration purposes only and is not to scale. The position and size of doors, windows, appliances and other features are approximate.



West End | 020 7240 3322 | westend@winkworth.co.uk



for every step...

winkworth.co.uk

Winkworth wishes to inform prospective buyers and tenants that these particulars are a guide and act as information only. All our details are given in good faith and believed to be correct at the time of printing but they don't form part of an offer or contract. No Winkworth employee has authority to make or give any representation or warranty in relation to this property. All fixtures and fittings, whether fitted or not are deemed removable by the vendor unless stated otherwise and room sizes are measured between internal wall surfaces, including furnishings.