



CHENISTON GARDENS, LONDON, W8
£895,000 LEASEHOLD

A LARGE ONE BEDROOM FLAT SITUATED ON THE
RAISED GROUND FLOOR OF A VICTORIAN
TERRACED HOUSE.

Kensington | 020 7727 1500
118 Kensington Church Street, Kensington, London, W8 4BH

Winkworth

for every step...

winkworth.co.uk



DESCRIPTION:

A large one bedroom flat situated on the raised ground floor of a Victorian terraced house. The property has a 20' reception room with high ceilings, bay window and fireplace. There is a separate kitchen, double bedroom, bathroom and separate WC.

ACCOMMODATION:

Leasehold 977 years, 1 Bedroom, 1 Reception Room, 1 Bathroom, Flat/Apartment, Ground Floor, Period, Fair decoration

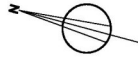
LOCAL AUTHORITY:

The Royal Borough of Kensington and Chelsea

NEAREST PUBLIC TRANSPORT:

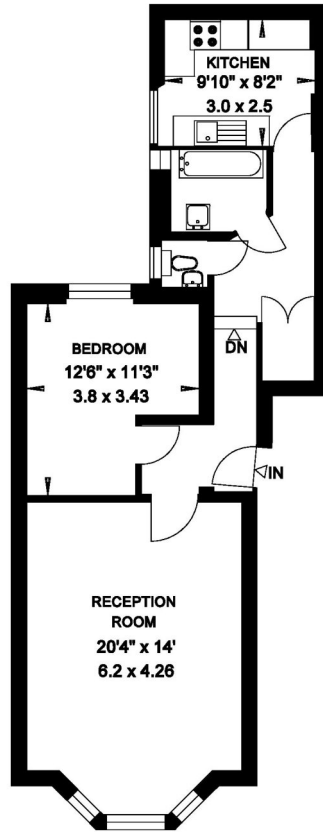
High Street Kensington





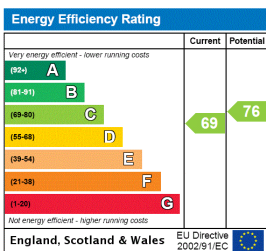
**CHENISTON GARDENS
LONDON W8**

**Gross Internal Area = 62 sq. metres
671 sq. feet**



GROUND FLOOR

This floorplan is for illustration purposes only and is not to scale. The position and size of doors, windows, appliances and other features are approximate.



Kensington | 020 7727 1500 | kensington@winkworth.co.uk
118 Kensington Church Street, Kensington, London, W8 4BH



for every step...

winkworth.co.uk

Winkworth wishes to inform prospective buyers and tenants that these particulars are a guide and act as information only. All our details are given in good faith and believed to be correct at the time of printing but they don't form part of an offer or contract. No Winkworth employee has authority to make or give any representation or warranty in relation to this property. All fixtures and fittings, whether fitted or not are deemed removable by the vendor unless stated otherwise and room sizes are measured between internal wall surfaces, including furnishings.