



THORPEBANK ROAD, LONDON, W12

£850,000 FREEHOLD

AN EXCEPTIONAL FOUR BEDROOM MID TERRACED FAMILY HOME SITUATED IN THE MOST ENVIABLE LOCATION

Shepherds Bush | 020 8735 3266 | shepherdsbush@winkworth.co.uk

A member of  OnTheMarket.com

winkworth.co.uk/shepherds-bush

Winkworth

for every step...



DESCRIPTION:

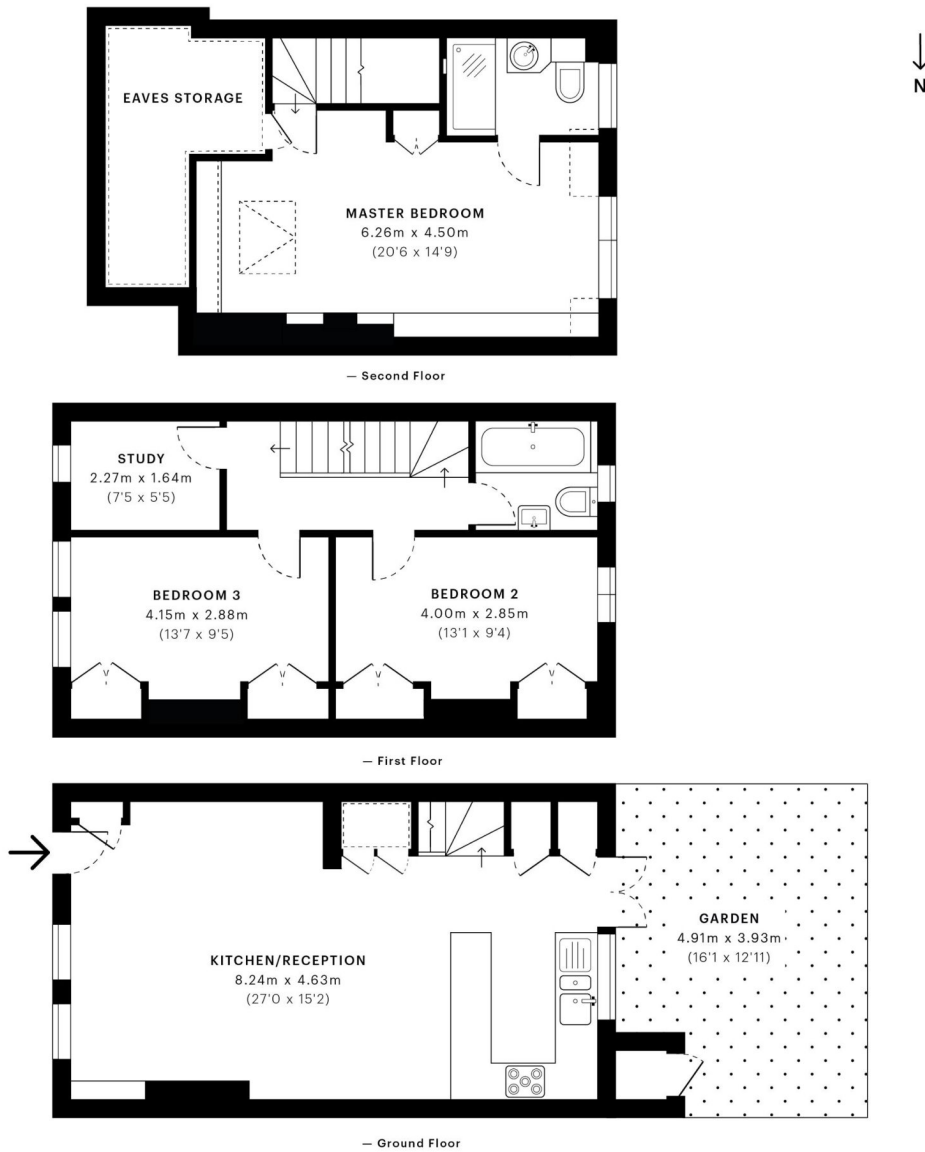
Enviously situated this charming three double plus study mid terraced family home. Bright and spacious throughout you enter the property walking directly into a large through kitchen/reception room with stripped wooden flooring and stunning feature fireplace with direct access to a secluded patio garden. On the first floor there are two double bedroom, well presented family bathroom and additional study/cot room as well as stairs leading to a beautifully presented loft room with ample storage and luxury en-suite shower room. Well-presented throughout with an abundance of character and charm this is a rare opportunity to acquire this exceptional house on one of the area's most sought after roads.

LOCATION:

Thorpebank road is a very popular residential road in the heart of the "Groves" area. It is in close proximity to enviable local amenities, excellent pubs and restaurants and exemplary public transport.







Freehold

All figures are approx. and should be used as a guide only