



HENDON WAY, GOLDERS GREEN, NW2
£575,000 SHARE OF FREEHOLD

BEAUTIFULLY PRESENTED & RECENTLY UPDATED THREE-BEDROOM DUPLEX APARTMENT WITH PRIVATE GARDEN & OFF-

Golders Green | 020 8458 8313 | goldersgreen@winkworth.co.uk

Winkworth

for every step...

winkworth.co.uk



DESCRIPTION:

Beautifully Presented & Recently Updated Three-Bedroom Duplex Apartment with Private Garden & Off-Street Parking. Set across the ground and first floors of a charming period conversion, this spacious and newly refurbished three-bedroom duplex apartment (plus study) offers modern living in a well-connected location. The first floor features a generously sized open-plan living room and contemporary fitted kitchen, ideal for both relaxing and entertaining. Also on this level is a well-proportioned master bedroom with a stylish en-suite shower room, along with a separate fully tiled family bathroom. Stairs lead down to the ground floor, where you'll find a second double bedroom and a separate study – perfect for home working or use as a guest room.

Additional benefits include a private garden, large driveway with off-street parking, and the added benefit of a share in the freehold.

Ideally situated close to local transport links and amenities, this is a fantastic opportunity to acquire a turnkey home in a desirable location.

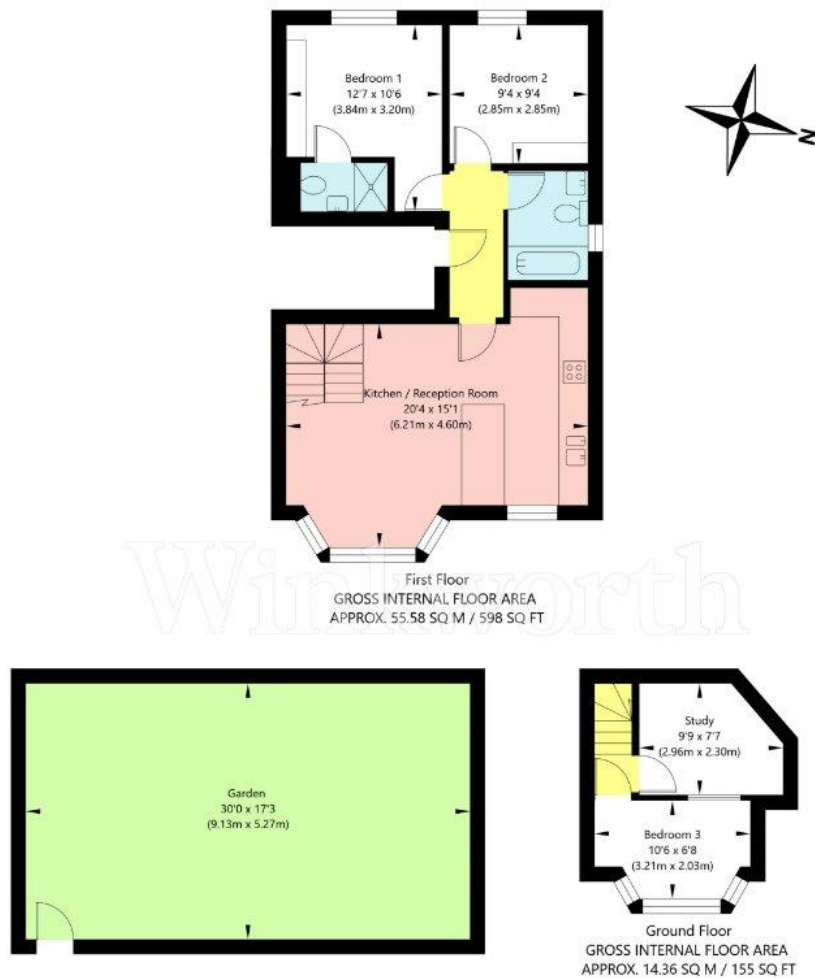
AT A GLANCE

- THREE BEDROOMS PLUS STUDY
- DUPLEX APARTMENT
- PRIVATE GARDEN
- SHARE OF FREEHOLD
- PARKING INCLUDED ON LARGE DRIVEWAY
- WELL LOCATED CLOSE TO TRANSPORT LINKS





Hendon Way, London NW2 2NA



APPROXIMATE GROSS INTERNAL FLOOR AREA 69.94 SQ M / 753 SQ FT
THIS FLOOR PLAN IS FOR ILLUSTRATIVE PURPOSES ONLY AND
SHOULD BE USED FOR THIS PURPOSE BY PROSPECTIVE APPLICANTS AS ITS NOT TO SCALE.

(c) AMBERSHORE PIX LIMITED / PHOTO - VIDEO - FLOOR PLANS / 0800 999 1577 / WWW.AMBERSHOREPIX.CO.UK

Tenure: Share of Freehold
Service Charge: N/A
Council Tax Band: BARNET (D)

Winkworth

for every step...

winkworth.co.uk

Winkworth wishes to inform prospective buyers and tenants that these particulars are a guide and act as information only. All our details are given in good faith and believed to be correct at the time of printing but they don't form part of an offer or contract. No Winkworth employee has authority to make or give any representation or warranty in relation to this property. All fixtures and fittings, whether fitted or not are deemed removable by the vendor unless stated otherwise and room sizes are measured between internal wall surfaces, including furnishings.