



Alderney Street, SW1V

£1,600 PER MONTH

FURNISHED

AT A GLANCE

- Spacious studio room
- Separate kitchen
- Bathroom
- Own front door
- Rent includes heating and hot water
- Council Tax Band: B

Winkworth

for every step...



Score	Energy rating	Current	Potential
92+	A		
81-91	B		
69-80	C	74 C	78 C
55-68	D		
39-54	E		
21-38	F		
1-20	G		

ALDERNEY STREET, SW1V

£1,600 PER MONTH

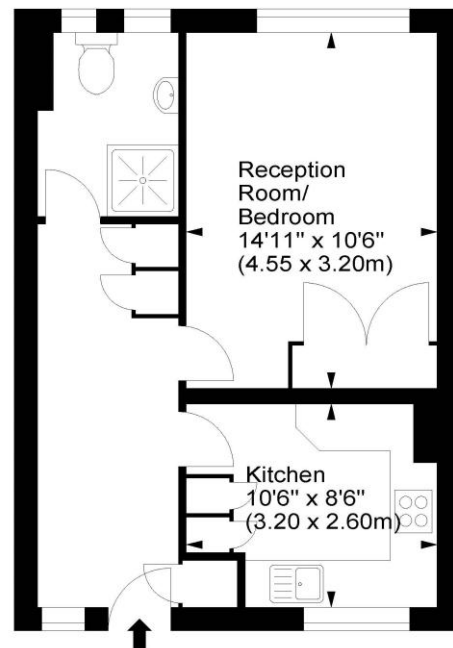
FURNISHED

A conveniently located first floor studio apartment close to Victoria and the cafes, restaurants, bars and boutiques of Pimlico. The property comprises of a main studio room, separate kitchen, family bathroom and excellent storage throughout the property. It further benefits from its own front door with direct access from Alderney Street and is offered on a furnished basis. The rental price includes hot water and heating.

Dryburgh House, SW1

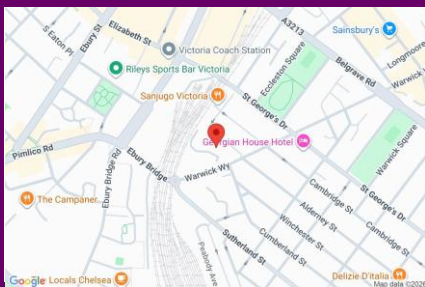


Approx. Gross Internal Area
403 Sq Ft - 37.44 Sq M



First Floor

For illustration purposes only. Not to scale.
All measurements are taken and shown at floor level.
www.r3photography.co.uk © Photography / Floor Plans / Lease Plans / EPCs



winkworth wishes to inform prospective buyers and tenants that these particulars are a guide and act as information only. All our details are given in good faith and believed to be correct at the time of printing but they don't form part of an offer or contract. No winkworth employee has authority to make or give any representation or warranty in relation to this property. All fixtures and fittings, whether fitted or not are deemed removable by the vendor unless stated otherwise and room sizes are measured between internal wall surfaces - including fireplaces.

Pimlico & Westminster | 020 7828 1786 |

pimlico@winkworth.co.uk

winkworth.co.uk/pimlico

Winkworth

for every step...