

Winkworth

Fulwood Walk, London, SW19 6RB







A fantastic freehold house within this private development near Wimbledon Common. Situated in a quiet cul-de-sac, accommodation comprises a bright living room, fitted kitchen which leads onto a small private garden, double bedroom and large bathroom. There is also the added benefit of a separate office. Unallocated residents off-street parking is also available. Offered to the market with no onward chain.

Fulwood Walk is a private cul-de-sac located within easy reach of Southfields Village and Wimbledon Common.

- FREEHOLD HOUSE
- PRIVATE GARDEN
- DOUBLE BEDROOM
- ADDITIONAL STUDY
- FITTED KITCHEN
- SEPARATE RECEPTION ROOM
- PRIVATE CUL-DE-SAC
- NO CHAIN



# Fulwood Walk, London, SW19 6RB



## Freehold

Internal area

Approximate gross internal area:

**Total 569 sq ft/ 52.9 sq m**



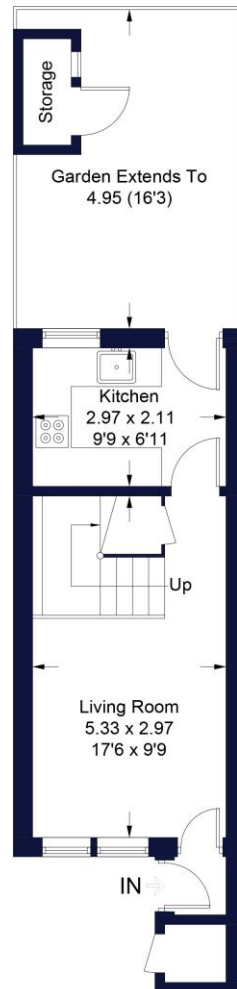
# Fulwood Walk, London, SW19 6RB



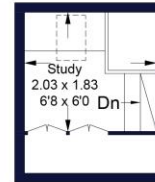
## Fulwood Walk

**Winkworth**

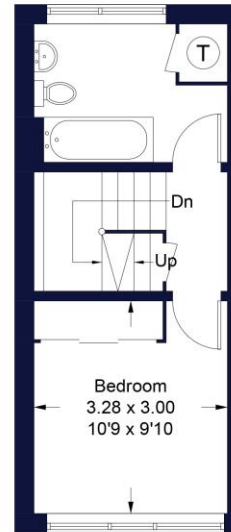
Approximate Gross Internal Area Total = 52.9 sq m / 569 sq ft  
(Excluding Storage)



**Ground Floor**  
Sq m 25 / Sq ft 269



**Second Floor**  
Sq m 5.1 / Sq ft 55



**First Floor**  
Sq m 22.8 / Sq ft 245

Illustration for identification purposes only, measurements are approximate, not to scale. FloorplansUsketch.com © 2022 (ID873054)

W621 Ravensworth 01670 713330

**Winkworth**

Under the Property Misdescriptions Act these particulars are intended as a guide and act as information only. They give a fair overall description for the guidance of potential purchasers or tenants but do not constitute an offer or part of a contract. All details and approximate measurements are given in good faith and are believed to be correct at the time of printing, but any potential purchasers or tenants should not rely on the mis-statements or representations of fact but must satisfy themselves by inspection or otherwise as to their correctness. No employee of Winkworth has authority to make or give any representation or warranty to this property.

Southfields Office 241 Wimbledon Park Road, SW18 5RJ | Tel: 0208 877 1000 | E-mail: Southfields@winkworth.co.uk  
[winkworth.co.uk](http://winkworth.co.uk)