



Watlington Street, Berkshire, RG1 4AY

£1,595 per month



Set in the Eldon Road conservation area a short walk to Reading Station and The Oracle shopping and entertainment complex is this well-presented fifth floor town centre apartment with far reaching views over Reading's roof tops. This lovely apartment comprises a generous open plan living space with a fitted kitchen and Juliette balcony, two double bedrooms, the master with an en suite shower room and a further three piece bathroom. The property further benefits from lift access and a secure gated allocated parking space. Available 6th December 2025. Furnished.

KEY FEATURES

- Two Bedroom Town Centre Apartment
- Fifth Floor with Lift Access
- Two bathrooms
- Communal Roof Terrace
- Secure Gated Allocated Parking Space
- Council tax band D
- Available 6th December
- Furnished

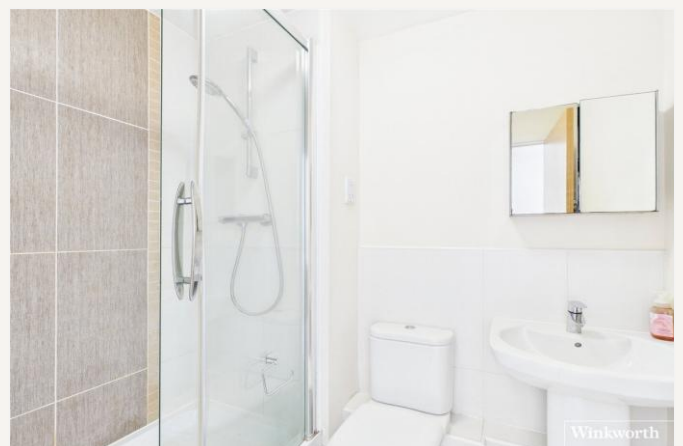


Reading

0118 4022 300 | reading@winkworth.co.uk

Winkworth

for every step...



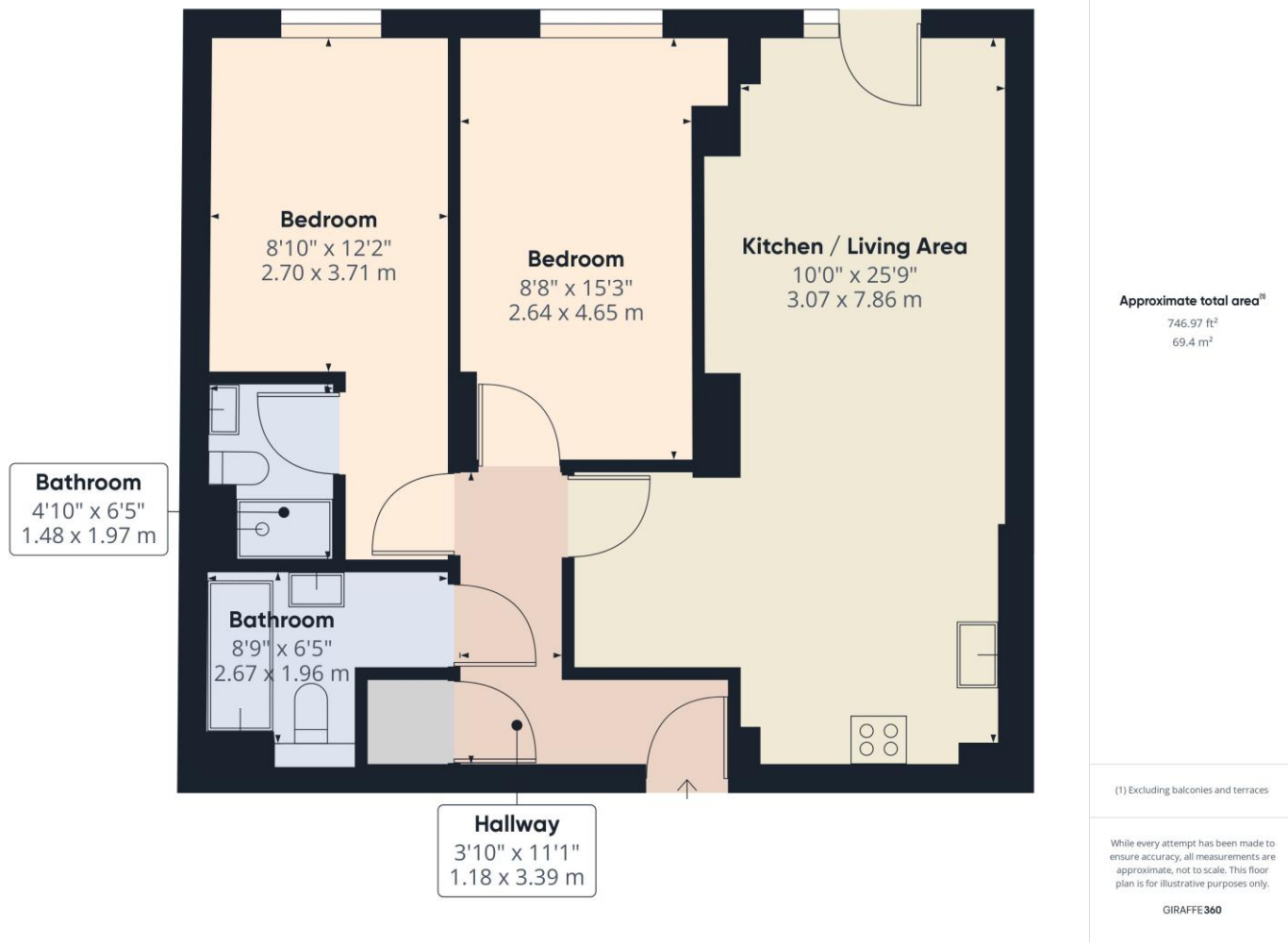


MATERIAL INFO

Deposit: £1,840.38

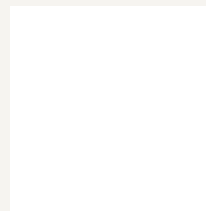
Holding Deposit: £368.07

Council Tax Band: D



Energy Efficiency Rating		
	Current	Potential
Very energy efficient - lower running costs		
(92+) A		
(81-91) B	84	84
(69-80) C		
(55-68) D		
(39-54) E		
(21-38) F		
(1-20) G		
Not energy efficient - higher running costs		
England, Scotland & Wales	EU Directive 2002/91/EC	

For more information, scan the QR code or visit the link below



<https://www.winkworth.co.uk/rent/property/REA250314>

Where no figures are shown, we have been unable to ascertain the information. All figures that are shown were correct at the time of printing.

Reading

0118 4022 300 | reading@winkworth.co.uk

Winkworth

for every step...

Winkworth wishes to inform prospective buyers and tenants that these particulars are a guide and act as information only. All our details are given in good faith and believed to be correct at the time of printing but they don't form part of an offer or contract. No Winkworth employee has authority to make or give any representation or warranty in relation to this property. All fixtures and fittings, whether fitted or not are deemed removable by the vendor unless stated otherwise and room sizes are measured between internal wall surfaces, including furnishings.