

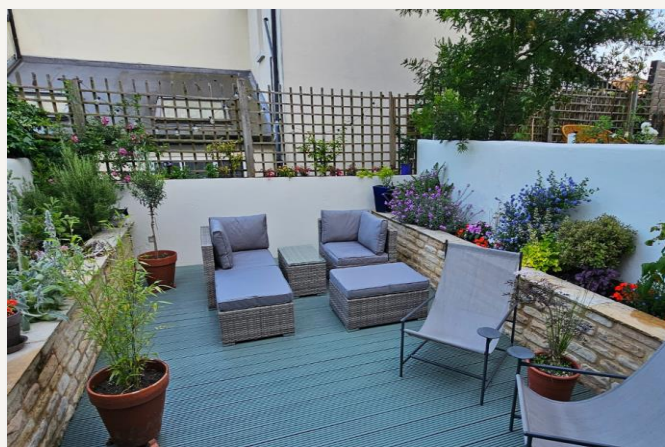


Fransfield Grove, SE26

£500,000 *Leasehold*

2  1  1 

An impressive Two bedroom period maisonette in a sought-after location, featuring bi-folding doors to a private garden, high ceilings, two double bedrooms and a separate store room. Ideally positioned close to amenities, transport links, schools and green spaces.



Forest Hill

| foresthill@winkworth.co.uk

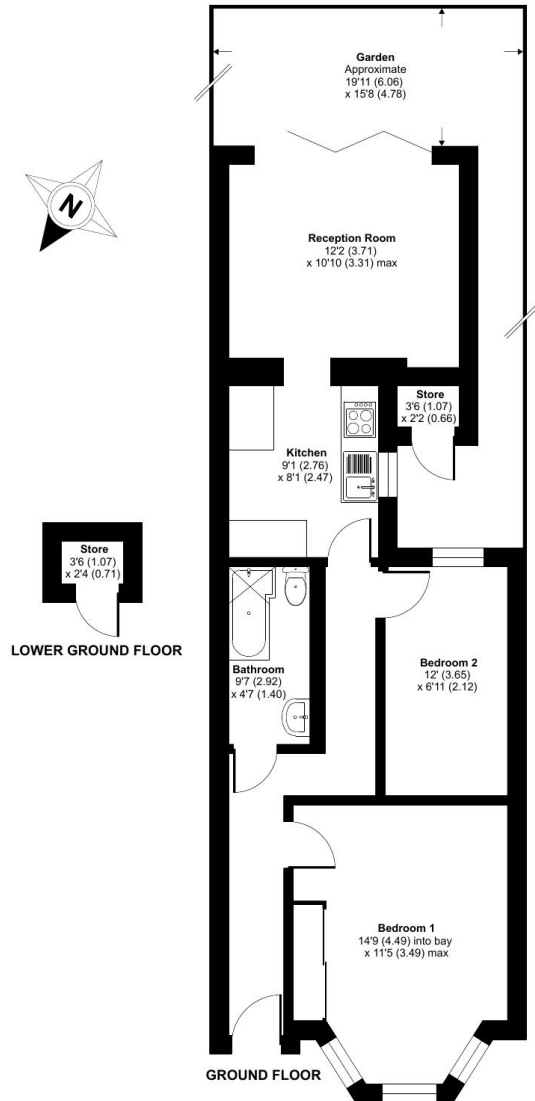
Fransfield Grove, London, SE26

Approximate Area = 589 sq ft / 54.7 sq m

Outbuildings = 14 sq ft / 1.3 sq m

Total = 603 sq ft / 56 sq m

For identification only - Not to scale

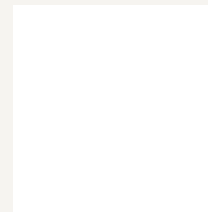


Floor plan produced in accordance with RICS Property Measurement Standards incorporating International Property Measurement Standards (IPMS2 Residential). © nichecom 2026. Produced for Winkworth Forest Hill and New Cross. REF: 1409279

MATERIAL INFO

For more information, scan the QR code or visit the link below

Tenure: Leasehold



<https://www.winkworth.co.uk/sale/property/FHL260025>

Where no figures are shown, we have been unable to ascertain the information. All figures that are shown were correct at the time of printing.

Forest Hill

| foresthill@winkworth.co.uk