



Winkworth

Kensington Way, Hertfordshire, WD6

OIEO £400,000 Freehold

An Immaculately Presented Two Double Bedroom House with Garage and Allocated Parking.

2  1  1 

KEY FEATURES

- Two Double Bedrooms
- Fitted Wardrobes
- Garage and Allocated Parking
- 659 Square Feet
- Gas Central Heating
- Immaculate Throughout
- Double Glazed
- Quiet Cul de Sac
- Guest Cloakroom



Winkworth



Winkworth

Borehamwood

020 8953 8899 | borehamwood@winkworth.co.uk



Constructed in 2002 by the highly regarded developer John Laing and presented for sale in immaculate order throughout is this two double bedroom home.

Internal accommodation stretching in excess of 650 square feet consists of a fitted kitchen, downstairs cloakroom and reception room with access to the garden. The upstairs comprises of two double bedrooms split by a tiled family bathroom. A further benefit includes allocated parking to the front of the property and a garage on block.

Situated in a quiet sought after cul de sac on the South side of Borehamwood, Close to well-regarded Schools including Yavneh College, the property makes an ideal purchase for first time buyers, downsizers and investors alike.

MATERIAL INFO

Tenure: Freehold

Term: N/A

Service Charge: N/A

Ground Rent: N/A

Council Tax Band: D

EPC rating: D



Winkworth



Winkworth

Approximate Gross Internal Area = 61.2 sq m / 659 sq ft
 Garage = 13.6 sq m / 146 sq ft
 Total = 74.8 sq m / 805 sq ft
 (Including Store)

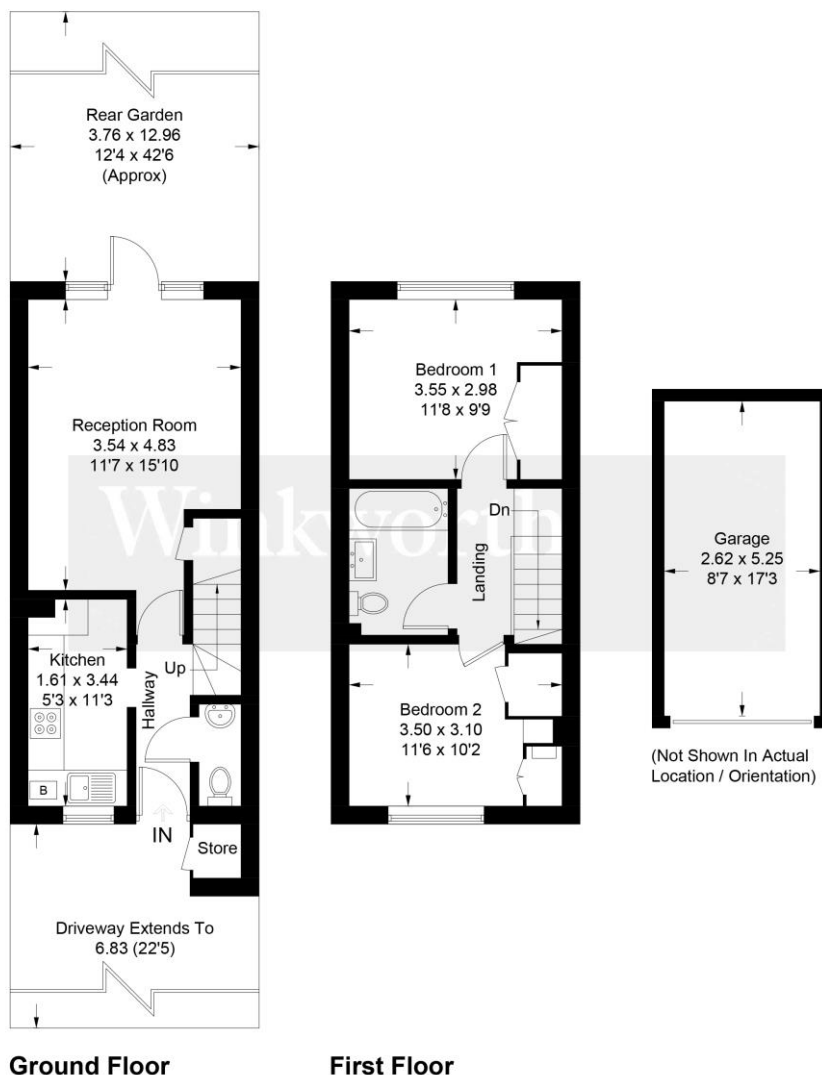
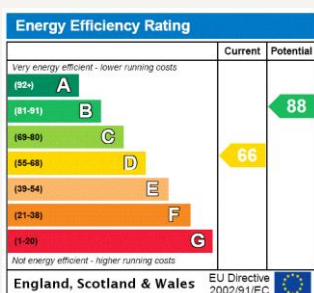


Illustration for identification purposes only, measurements are approximate, not to scale. Winkworth © 2019 (ID591703)

For more information, scan the QR code or visit the link below



<https://www.winkworth.co.uk/sale/property/BOR250123>

Where no figures are shown, we have been unable to ascertain the information. All figures that are shown were correct at the time of printing.

Borehamwood

020 8953 8899 | borehamwood@winkworth.co.uk