

Edithna Street, London, SW9

£950,000 Freehold

A beautiful late Victorian home with a garden. Tucked away on the peaceful, residential Edithna Street, this charming late Victorian mid-terrace house offers spacious and stylish living across two bedrooms, with the added benefit of a stunning private garden. EPC rating D.

Winkworth

[winkworth.co.uk/kennington](https://www.winkworth.co.uk/kennington)

for every step...

LOCATION

Ideally located just off Landor Road, between Kimberley Road and Arlesford Road, Edithna Street forms part of a sought-after residential enclave. You’re within easy reach of Clapham, Little Portugal, and Brixton – each offering a vibrant mix of shops, cafes, restaurants, and transport links.

DESCRIPTION

Upon entering, you’re greeted by a bright and airy double reception room to the right. This versatile space features beautiful front-facing sash windows that flood the room with natural light – perfect for relaxing or entertaining.

To the rear of the property lies a well-appointed kitchen with ample storage, generous worktop space, and an integrated oven with extractor fan. French doors lead out to a generous garden – an ideal setting for al fresco dining, summer gatherings, or simply enjoying a quiet moment outdoors. A shed provides additional storage.

Upstairs, the first floor hosts two spacious double bedrooms, both with built-in wardrobes. A sleek family bathroom includes a walk-in shower, freestanding bathtub, WC, and washbasin. A separate guest WC is located adjacent for added convenience.

UTILITIES

- Electricity – mains connected
- Gas – mains connected
- Water – mains connected
- Heating – gas central heating
- Sewerage – mains connected
- Broadband - Ultrafast Broadband

LOCAL AUTHORITY

- Lambeth
- Council Tax Band E

TENURE

- Freehold

DIRECTIONS

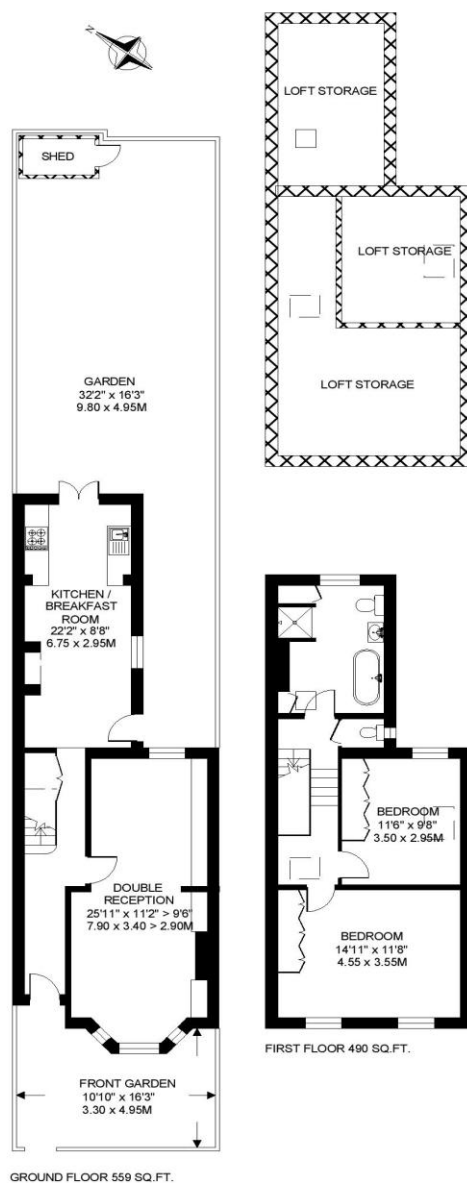
Clapham North Underground Station (Northern Line) is 0.3 miles away (6-minute walk). Stockwell Stations (Victoria/Northern Lines) are 0.6 miles away (12-minute walk). Clapham High Street Overground Station (London Overground & Southeastern Rail) is 0.5 miles away (11-minute walk).

Score	Energy rating	Current	Potential
92+	A		
81-91	B		
69-80	C		76 C
55-68	D	62 D	
39-54	E		
21-38	F		
1-20	G		



EDITHNA STREET SW9
2 BEDROOM HOUSE

Approximate gross floor area
1049 SQ.FT / 97.5 SQ.M.
Plus loft and shed storage 461 sq.ft. / 42.8 sq.m.



Copyright: These plans should not be reproduced by any other person, without permission.
Floorplan produced for Winkworth by Floorplanners 07801 228850

This floorplan is for illustration purposes only and is not to scale. The position and size of doors, windows, appliances and other features are approximate.

Kennington | 020 7587 0600 | kennington@winkworth.co.uk