



**LION COURT, READING, BERKSHIRE, RG1 7HD**  
**£1,600 PER MONTH FURNISHED**

## **SPACIOUS TWO BEDROOM FIRST FLOOR APARTMENT LOCATED A SHORT WALK FROM READING TRAIN STATION**

Reading | 0118 4022 300 | [reading@winkworth.co.uk](mailto:reading@winkworth.co.uk)

**Winkworth**

for every step...

[winkworth.co.uk](http://winkworth.co.uk)





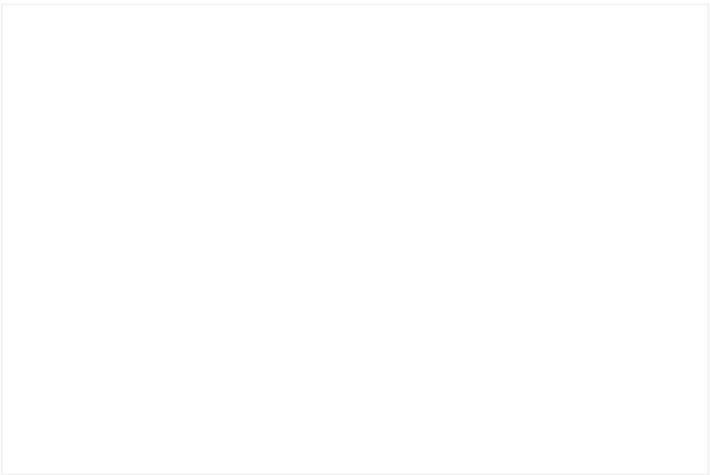
## DESCRIPTION:

Spacious two bedroom first floor apartment located a short walk from Reading train station. The property comprises a large open plan living/dining area and kitchen, two double bedrooms with an en suite to the master bedroom, a bathroom and storage cupboard. Benefits include secure gated parking space, lift access and video entry system. Available 10th September 2025. Furnished.

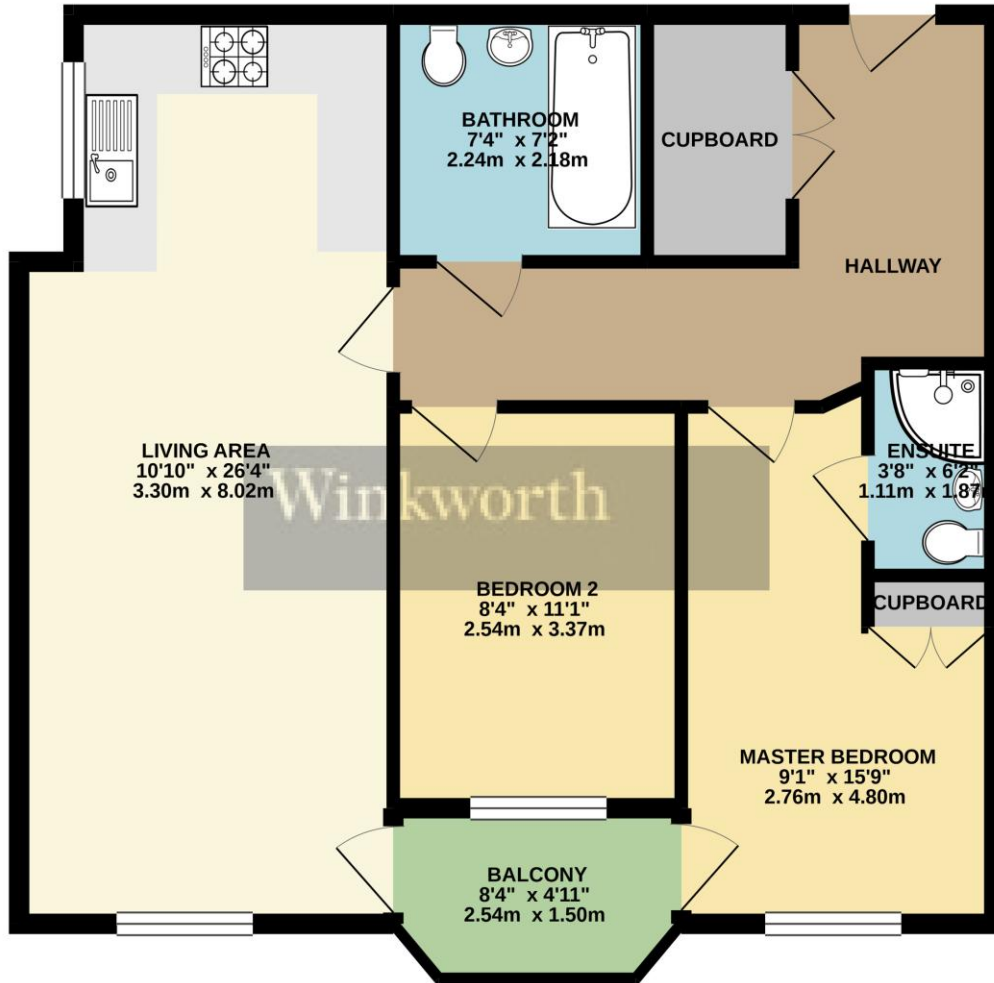
## AT A GLANCE

- Close to Reading station
- Two double bedrooms
- Open plan living area
- Gated parking space
- Council tax band C
- Available 10th September
- Furnished





FIRST FLOOR  
703 sq.ft. (65.3 sq.m.) approx.



TOTAL FLOOR AREA : 703 sq.ft. (65.3 sq.m.) approx.

Whilst every attempt has been made to ensure the accuracy of the floorplan contained here, measurements of doors, windows, rooms and any other items are approximate and no responsibility is taken for any error, omission or mis-statement. This plan is for illustrative purposes only and should be used as such by any prospective purchaser. The services, systems and appliances shown have not been tested and no guarantee as to their operability or efficiency can be given.  
Made with Metropix ©2021

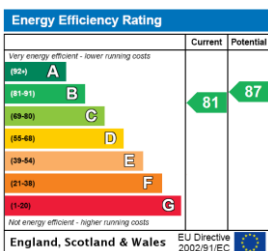
This floorplan is for illustration purposes only and is not to scale. The position and size of doors, windows, appliances and other features are approximate.

Deposit: £1,846.15

Holding Deposit: £369.23

Council Tax Band: C

Where no figures are shown, we have been unable to ascertain the information. All figures that are shown were correct at the time of printing.



Reading | 0118 4022 300 | [reading@winkworth.co.uk](mailto:reading@winkworth.co.uk)

**Winkworth**

for every step...

[winkworth.co.uk](http://winkworth.co.uk)

Winkworth wishes to inform prospective buyers and tenants that these particulars are a guide and act as information only. All our details are given in good faith and believed to be correct at the time of printing but they don't form part of an offer or contract. No Winkworth employee has authority to make or give any representation or warranty in relation to this property. All fixtures and fittings, whether fitted or not are deemed removable by the vendor unless stated otherwise and room sizes are measured between internal wall surfaces, including furnishings.