



WESTBOURNE TERRACE, BAYSWATER, W2
£460,000 SHARE OF FREEHOLD

Winkworth



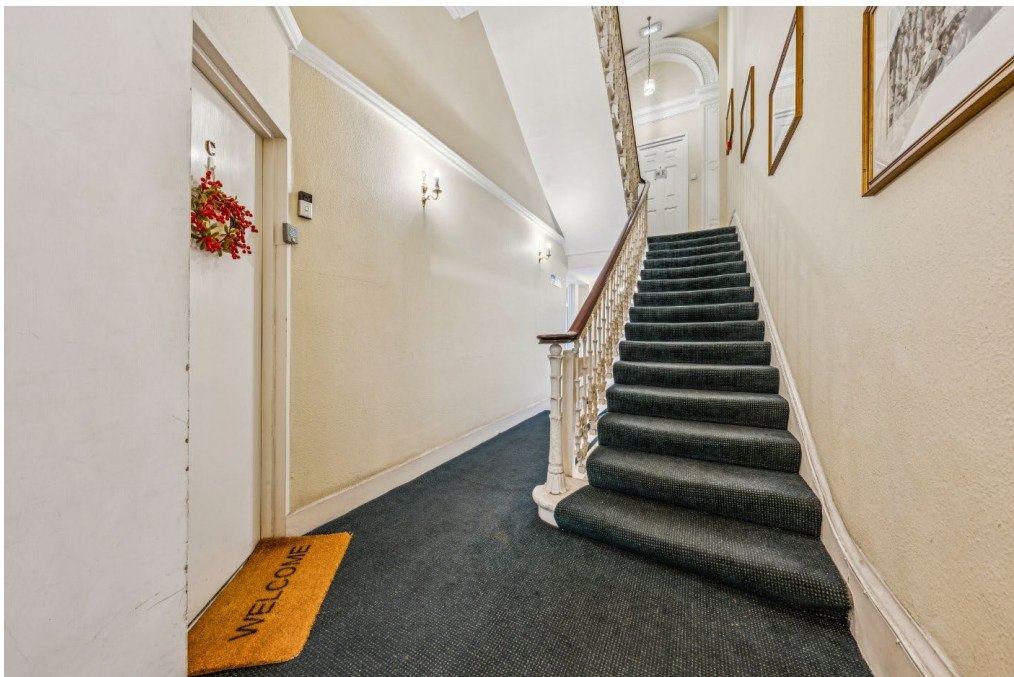
WESTBOURNE TERRACE, BAYSWATER, W2

Located in W2 - near Hyde Park, a light and bright, one bedroom, well presented, fourth floor apartment, with share of freehold and set within a handsome period Grade II building.

Westbourne Terrace is a most attractive tree lined street, considered one of the finest wide tree-lined avenue's in London, running north from Hyde Park, with Paddington Station (Heathrow Express and the Elizabeth Line), Lancaster Gate (central line) and The A40 close at hand.

Leasehold, plus share of Freehold - About 944 unexpired
Service charge - About £2,300 per annum, including part contribution to the reserve fund
Ground rent - Peppercorn
Council Tax Band: D

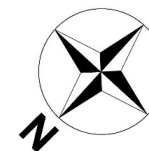




Westbourne Terrace, W2

Approximate Gross Internal Area = 33.29 sq m / 358 sq ft

Key :
CH - Ceiling Height



Not to scale, for guidance only and must not be relied upon as a statement of fact.
All measurements and areas are approximate only

West End | 020 7240 3322 | westend@winkworth.co.uk

winkworth.co.uk

Winkworth wishes to inform prospective buyers and tenants that these particulars are a guide and act as information only. All our details are given in good faith and believed to be correct at the time of printing but they don't form part of an offer or contract. No Winkworth employee has authority to make or give any representation or warranty in relation to this property. All fixtures and fittings, whether fitted or not are deemed removable by the vendor unless stated otherwise and room sizes are measured between internal wall surfaces, including furnishings.

Winkworth