



Gloucester Gardens, W2

£795 per week (£3,445.00 PCM) *Furnished*



AN INCREDIBLE OPPORTUNITY TO RENT THIS STUNNING FIRST FLOOR FLAT WITH FABULOUS FLOOR TO CEILING WINDOWS LEADING OUT TO A LARGE SOUTH FACING BALCONY



Notting Hill Lettings

0207 727 3227 | nottinghill@winkworth.co.uk

Winkworth

for every step...



An incredible opportunity to rent this stunning first floor flat with fabulous floor to ceiling windows leading out to a large south facing balcony- interior designed to the highest of standards showcasing its retained classical features such as high ceilings, cornice, wood floors, fireplace, cleverly designed fitted hidden kitchen, stunning bathroom with walk in shower and beautiful bedroom with fabric wallpaper and arched ceiling and substantial full height storage - The property further comprises a separate utility cupboard housing the washing machine and separate dryer off the communal hallway for sole use - The flat has been thoughtfully and tastefully furnished throughout and viewing are highly recommended . Also available for short let by separate negotiation.

Nestled in the heart of Notting Hill, Gloucester Gardens is a charming, tree-lined residential street known for its elegant period townhouses and peaceful atmosphere. Just moments from the vibrant shops, cafés, and markets of Westbourne Grove and Portobello Road, it offers a quiet retreat with excellent transport links via nearby Paddington and Royal Oak stations.

Utilities:

Electricity – Mains

Water – Mains

Sewerage – Mains

Heating – Gas

Broadband <https://checker.ofcom.org.uk/en-gb/broadband-coverage>

Mobile Coverage <https://checker.ofcom.org.uk/en-gb/mobile-coverage>

MATERIAL INFO

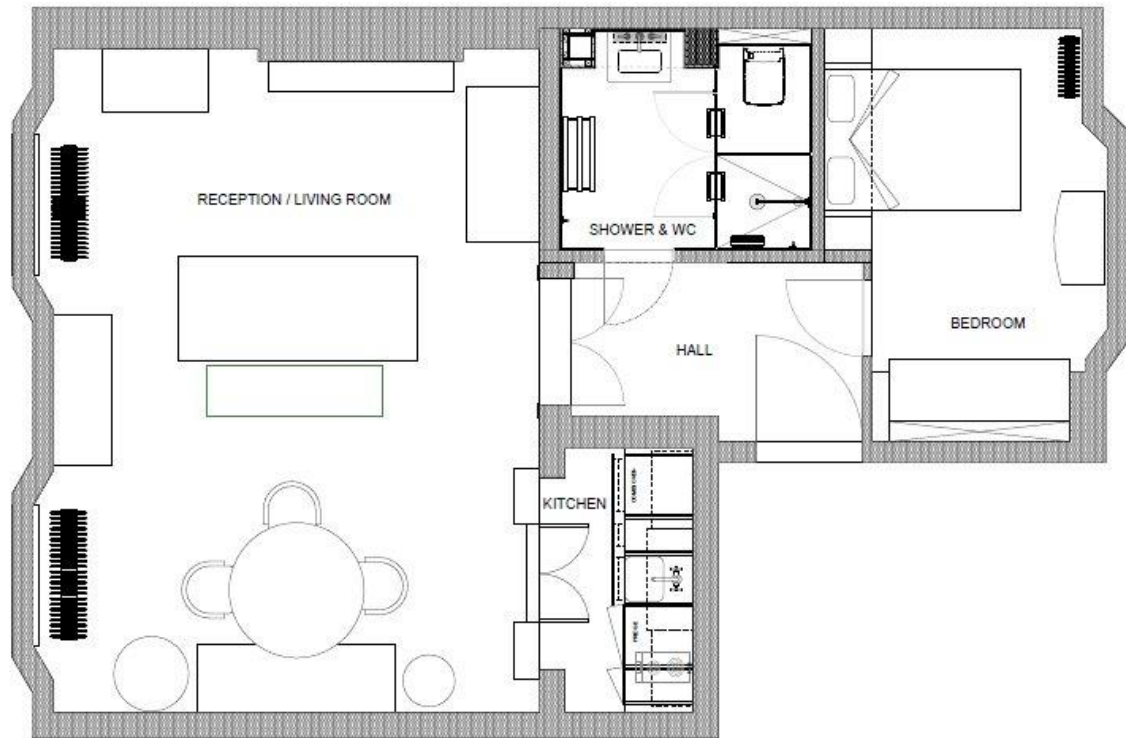
Deposit: £3,975

Holding Deposit: £795

Council Tax Band: D (Westminster)







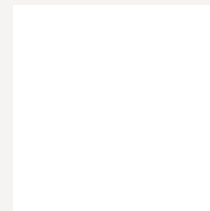
1 General Floor Plan
Scale: 1:33

Project: 98C, Gloucester Gardens	Drawing Title: General Floor Plan	This drawing is the property of Studio Hapwood Ltd. It may not be copied or checked to any third party for any purpose except as authorized in writing by Studio Hapwood Ltd.				Studio Hapwood Ltd 48 Gloucester Place London W1U 6JP +44 (0)20 7460 2004 studio@studiohapwood.com
MD 59H, London	Drawing No: 04	Issue No: Issue 0				
Client: Daniel Hapwood	Date: 20/08/2025	Scale: 1:25	Drawn by: PEK	Use within measurements, and all dimensions must be checked on site prior to ordering or manufacturing any goods or materials.		



Score	Energy rating	Current	Potential
92+	A		
81-91	B		
69-80	C	70 C	79 C
55-68	D		
39-54	E		
21-38	F		
1-20	G		

For more information, scan the QR code or visit the link below



<https://www.winkworth.co.uk/rent/property/NHS240162>

Where no figures are shown, we have been unable to ascertain the information. All figures that are shown were correct at the time of printing.

Notting Hill Lettings

0207 727 3227 | nottinghill@winkworth.co.uk

Winkworth

for every step...

Winkworth wishes to inform prospective buyers and tenants that these particulars are a guide and act as information only. All our details are given in good faith and believed to be correct at the time of printing but they don't form part of an offer or contract. No Winkworth employee has authority to make or give any representation or warranty in relation to this property. All fixtures and fittings, whether fitted or not are deemed removable by the vendor unless stated otherwise and room sizes are measured between internal wall surfaces, including furnishings.