



MANTILLA ROAD, LONDON, SW17
£600,000 SHARE OF FREEHOLD

A WELL PRESENTED TWO BEDROOM PERIOD CONVERION FLAT.

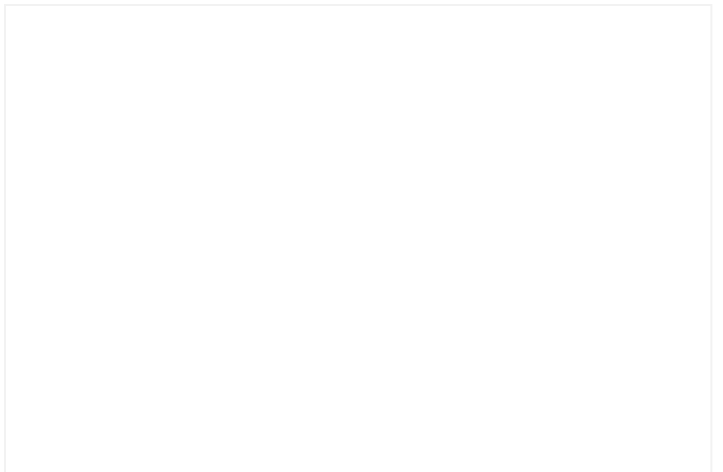
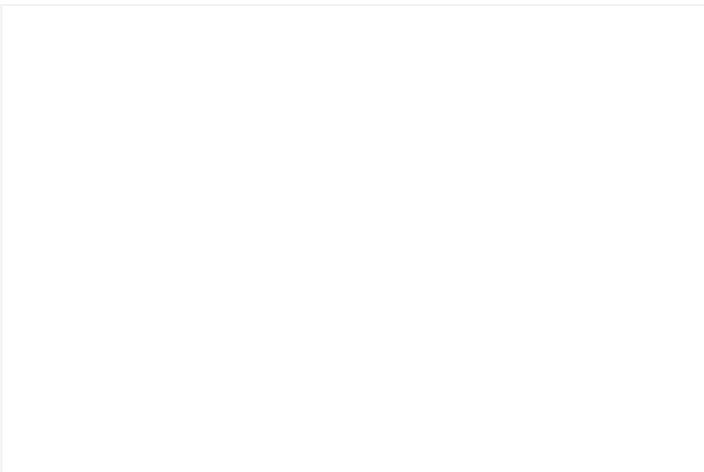
Tooting | 020 8767 5221 | tooting@winkworth.co.uk



DESCRIPTION:

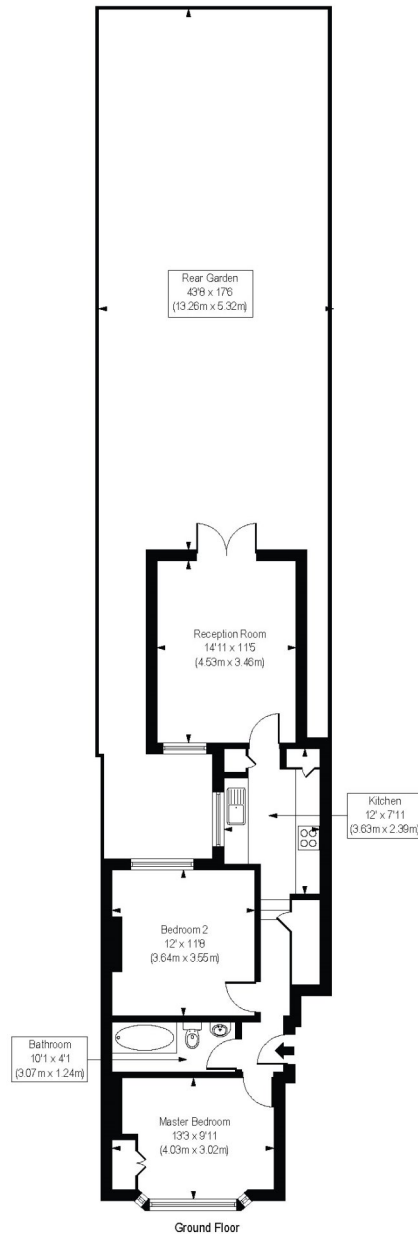
A charming two bedroom ground floor conversion flat situated on a sought after tree lined road in Tooting Bec. This property boasts two double bedrooms, bathroom suite, fitted kitchen, spacious living room and a stunning 43ft private garden.

Mantilla road is a quiet residential road that is only a short walk from the wide-open spaces of Tooting Bec Common. Local amenities can be found on Franciscan Road as well as Upper Tooting Road. Tooting Bec station (Northern line, Zone 3), as well as local bus routes are also nearby, offering frequent access into the City.



Mantilla Road, SW17

Approx. Gross Internal Floor Area 644 sq. ft / 59.83 sq. m



COMPLIANT WITH RICS CODE OF MEASURING PRACTICE. Floorplan is for illustrative purposes only and is not to scale. Every attempt has been made to ensure the accuracy of the floorplan shown, however all measurements, fixtures, fittings and data shown are an approximate interpretation for illustrative purposes only. Liability for errors, omissions or mis-statement through negligence or otherwise is hereby excluded.

This floorplan is for illustration purposes only and is not to scale. The position and size of doors, windows, appliances and other features are approximate.