



Maine Street, Berkshire, RG2 6AZ

£2,500 per month *Unfurnished*

Brand new four bedroom semi-detached townhouse located at Green Park Village which is perfectly placed minutes from central Reading with excellent access to the M4 and benefitting from Green Park train station. The ground floor comprises Shaker style kitchen with Bosch integrated appliances, dining area with patio doors leading out to the rear garden and cloakroom. Located on the first floor is the living room and the master bedroom benefitting from built in wardrobes and en suite shower room. Three bedrooms and a four piece family bathroom occupy the top floor. Additional features include underfloor heating on the ground floor and both bathrooms, private rear garden and two off road parking spaces. Available 22nd September. Unfurnished.

4  2  2 

KEY FEATURES

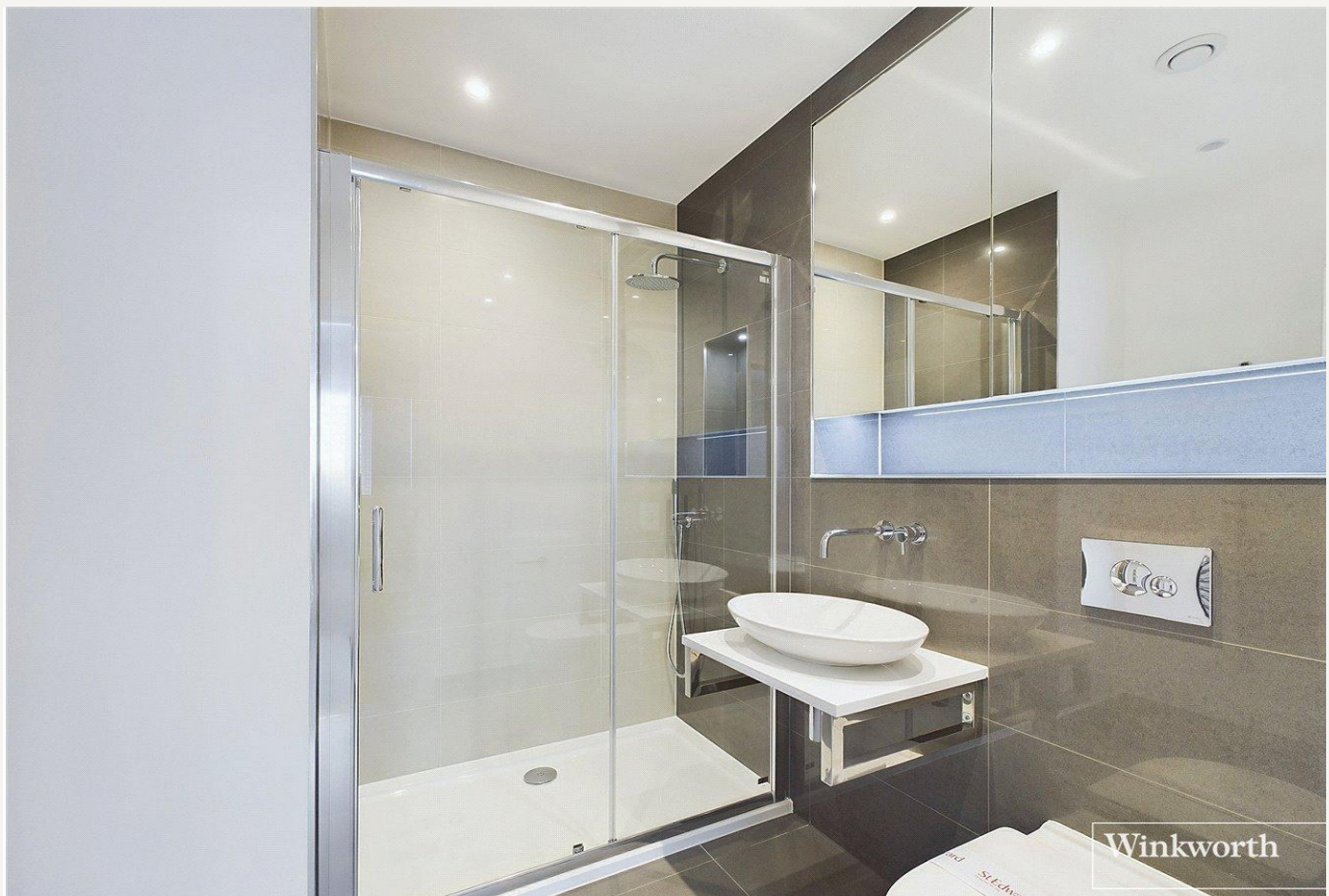
- Four bedroom townhouse
- Brand new
- En suite to master bedroom
- Council tax band E
- Two parking spaces
- Available now
- Unfurnished



Reading

0118 4022 300 | reading@winkworth.co.uk



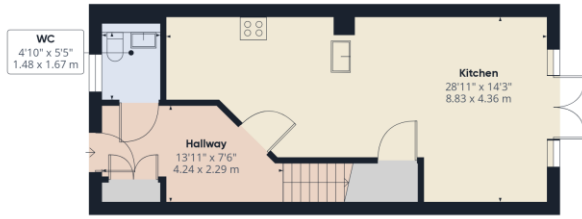


MATERIAL INFO

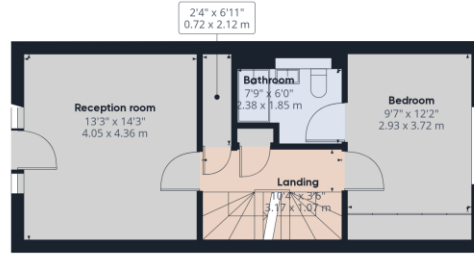
Deposit: £2,884.62

Holding Deposit: £576.92

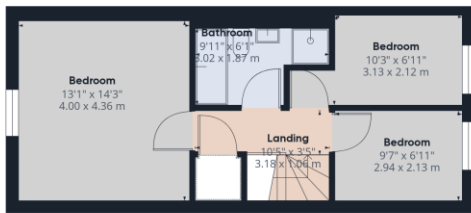
Council Tax Band: E



Ground Floor



Floor 1



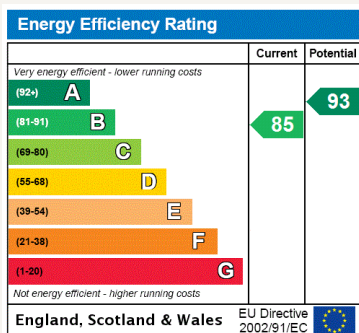
Floor 2

Approximate total area⁽¹⁾
1380.48 ft²
128.25 m²

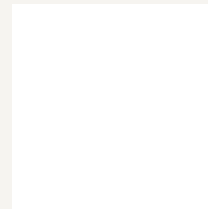
(1) Excluding balconies and terraces

While every attempt has been made to ensure accuracy, all measurements are approximate, not to scale. This floor plan is for illustrative purposes only.

GIRAFFE360



For more information, scan the QR code or visit the link below



<https://www.winkworth.co.uk/rent/property/REA230539>

Where no figures are shown, we have been unable to ascertain the information. All figures that are shown were correct at the time of printing.

Reading

0118 4022 300 | reading@winkworth.co.uk