



WARWICK SQUARE, SW1V

£850,000

SHARE OF FREEHOLD

At a glance...

- C.1050 Square Feet
- Two Double Bedrooms
- Bright & Spacious
- Two Ensuite Bathrooms
- Additional WC
- Council Tax Band: F

Winkworth

for every step...



Score	Energy rating	Current	Potential
92+	A		
81-91	B		
69-80	C	73 C	80 C
55-68	D		
39-54	E		
21-38	F		
1-20	G		

WARWICK SQUARE, SW1V

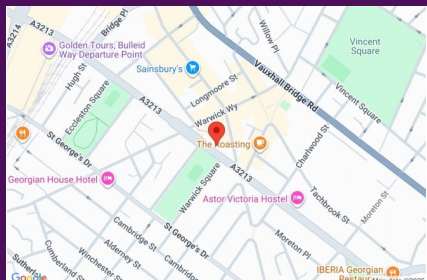
£850,000

SHARE OF FREEHOLD

Located on the side of Warwick Square this fantastic 2-bedroom flat offers two large double bedrooms, both with ensuite bathrooms. There is an additional WC and the whole flat feels bright and spacious throughout.

Featuring a stunning, wide reception room with wooden floors and a separate kitchen with ample space for dining, the flat offers great proportions, high ceilings and is ready for a new buyer to move-in.

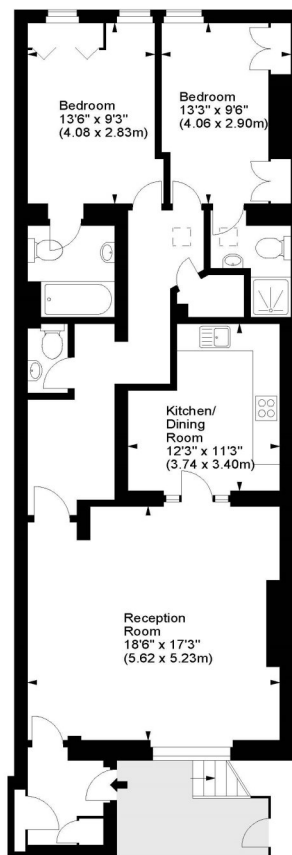
With a share of freehold and located in a brilliant position for Victoria Station, the amenities of Pimlico and a short walk to Belgravia, this flat is a perfect London pied-a-terre or central SW1 home.



winkworth wishes to inform prospective buyers and tenants that these particulars are a guide and act as information only. All our details are given in good faith and believed to be correct at the time of printing but they don't form part of an offer or contract. No winkworth employee has authority to make or give any representation or warranty in relation to this property. All fixtures and fittings, whether fitted or not are deemed removable by the vendor unless stated otherwise and room sizes are measured between internal wall surfaces - including fireplaces.

Warwick Square, SW1

Approx. Gross Internal Area
1049 Sq Ft - 97.45 Sq M



Lower Ground Floor

For illustration purposes only. Not to scale.
All measurements are taken and shown at floor level.
www.r3photography.co.uk © Photography / Floor Plans / Lease Plans / EPCs



Pimlico & Westminster

020 7828 1786

pimlico@winkworth.co.uk

winkworth.co.uk/pimlico-westminster

Winkworth

for every step...