



**STRAWBERRY FIELDS, DEVIZES, WILTSHIRE, SN10**  
**£1,200 PER MONTH UNFURNISHED**

**DESCRIPTION:**

A beautifully presented, three bed, semi-detached property in the popular village of Easterton. Garden, residents' parking, pets considered. Available for 12 months initially with potential to extend.

EPC Band B

Wiltshire Council Tax Band C

**Marlborough** | 01672 552 777 | marlborough@winkworth.co.uk

Superfast Broadband available (49mbps), Mobile coverage good outdoors, variable indoors depending on provider

[winkworth.co.uk](http://winkworth.co.uk)

**Winkworth**

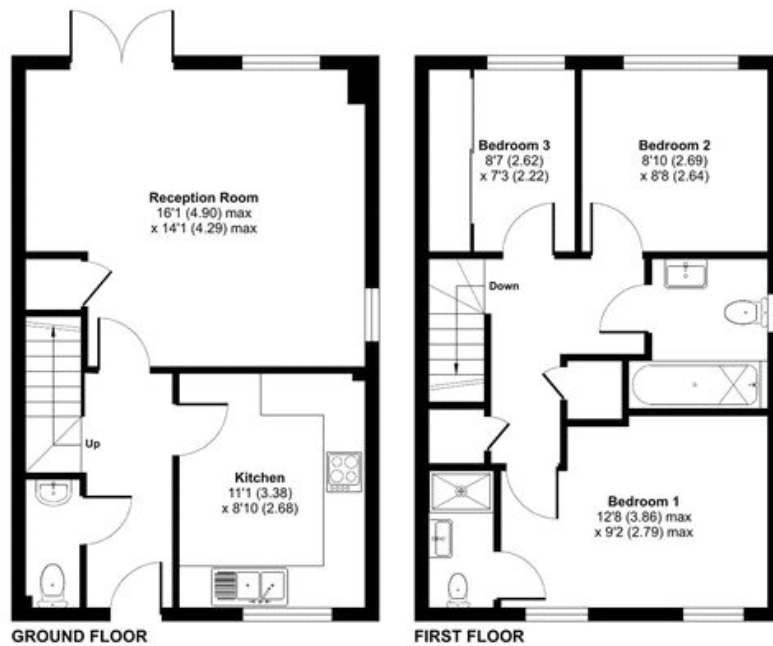
for every step...





## Strawberry Fields, Easterton, Devizes, SN10

Approximate Area = 820 sq ft / 76.1 sq m  
For identification only - Not to scale



This floorplan is for illustration purposes only and is not to scale. The position and size of doors, windows, appliances and other features are approximate.

Marlborough | 01672 552 777 | marlborough@winkworth.co.uk

**Winkworth**

for every step...

[winkworth.co.uk](http://winkworth.co.uk)

Winkworth wishes to inform prospective buyers and tenants that these particulars are a guide and act as information only. All our details are given in good faith and believed to be correct at the time of printing but they don't form part of an offer or contract. No Winkworth employee has authority to make or give any representation or warranty in relation to this property. All fixtures and fittings, whether fitted or not are deemed removable by the vendor unless stated otherwise and room sizes are measured between internal wall surfaces, including furnishings.