



Lowden Close, Winchester, Hampshire, SO22 4EW

Winkworth





Lowden Close, Winchester, Hampshire, SO22 4EW

## A One Bedroom House with Huge Potential in a Quiet Residential Pocket

A rare opportunity to acquire a freehold one-bedroom house, quietly tucked away off Lowden Road and offering brilliant potential for renovation and personalisation. Set over two floors and offering a private entrance, this compact home presents an ideal opportunity for first-time buyers, investors or those seeking a more private alternative to a flat, and it is offered with no forward chain. The property could do with some cosmetic renewing and updating in areas.

Upon entering through a private front door, you are welcomed into a practical entrance porch with useful built-in storage. From here, the home opens into a bright and airy sitting room, featuring a slim horizontal window and French doors leading to the garden, offering excellent natural light throughout the day. The space is open plan but well-zoned, with clear potential for a cosy lounge and dining arrangement. The adjacent kitchen is on hand, connected by an archway as well as a doorway. There is a good range of wall and base units and tiled splashbacks, alongside space and plumbing for a washing machine and built-in gas hob with overhead extractor.

The staircase rises to the first floor, where you will find a generously sized double bedroom spanning the full width of the house. This room benefits from dual-aspect windows and spacious fitted wardrobes, offering an abundance of built-in storage. The accommodation is completed by a bright three-piece bathroom, positioned just off the upstairs landing, and ventilation. While the room would benefit from some modernisation, it provides a solid foundation for a stylish update.

Outside there is a low maintenance, private courtyard garden with garden gate. A private allocated parking space comes with the property.

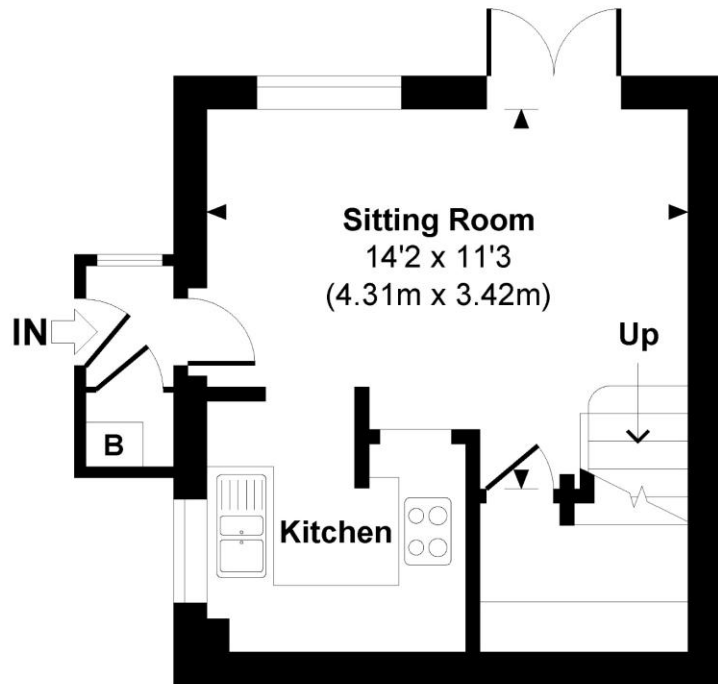




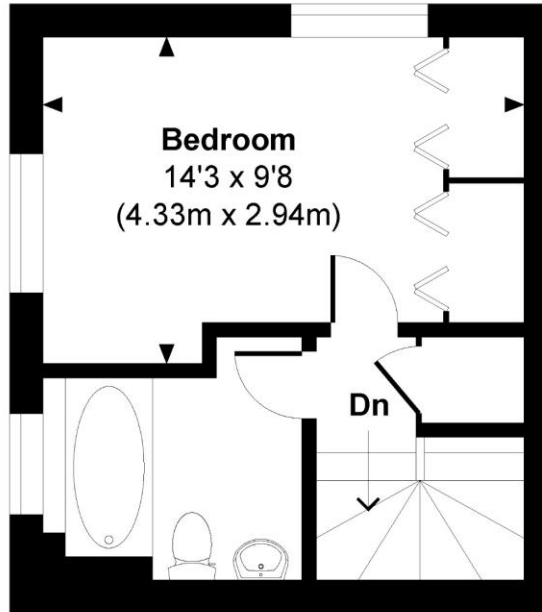


## Lowden Road

Approximate Gross Internal Area  
Total = 477 Sq Ft / 44.32 Sq M



GROUND FLOOR



FIRST FLOOR



© www.propertyfocus.co | Professional Property Photography & Floorplans

This plan is for illustrative purposes only and is not to scale. If specified, the Gross Internal Area (GIA), dimensions, North point orientation and the size and placement of features are approximate and should not be relied on as a statement of fact. No guarantee is given for the GIA and no responsibility is taken for any error, omission or misrepresentation.

## Lowden Close, Winchester, Hampshire, SO22 4EW

### Directions

From our Winchester office on High Street, begin by heading west and continuing straight onto Romsey Road. You will pass the hospital and University on your left. Stay on Romsey Road as it curves, then bear right onto Kings Road. A short distance along, turn left into Lowden Close, a quiet cul-de-sac nestled within the popular Badger Farm area. The property is located towards the end of the close in a peaceful residential setting.

### Location

The property is ideally located in the popular Badger Farm area, just over two miles from Winchester city centre. This peaceful residential setting offers the best of both worlds, a quiet, community-focused neighbourhood with easy access to the vibrant city. The property falls within the catchment for the highly regarded Westgate School and Kings School. Residents benefit from nearby amenities including a large Sainsbury's, local shops, and the Badger Farm Community Centre, as well as excellent transport links with regular bus services and quick access to the M3 motorway.

**COUNCIL TAX:** Band B, Winchester City Council.

**SERVICES:** Mains Gas, Electricity, Water & Drainage.

**BROADBAND:** Fibre to the Cabinet Broadband. Checked on Openreach June 2025.

**MOBILE SIGNAL:** Coverage With Certain Providers.

**HEATING:** Mains Gas Central Heating.

**TENURE:** Freehold.

**EPC RATING:** C

**PARKING:** Private Allocated Parking Space.

### Viewings

Strictly by appointment with Winkworth Winchester Office

[Winkworth.co.uk/winchester](https://www.winkworth.co.uk/winchester)

### Winkworth Winchester

72 High Street, Winchester, SO23 9DA  
01962 866 777 | [winchester@winkworth.co.uk](mailto:winchester@winkworth.co.uk)

### Winkworth Country House Department

13 Charles II Street, St James's, London, SW1Y 4QU  
020 7870 4878 | [countryhouse@winkworth.co.uk](mailto:countryhouse@winkworth.co.uk)

**Winkworth**

See things differently