



LODORE GARDENS, LONDON, NW9
OIEO £600,000 FREEHOLD

THREE BEDROOM SEMI DETACHED HOME **SPRINGFIELD ESTATE**

Kingsbury | 020 8204 0000 | kingsbury@winkworth.co.uk

Winkworth

winkworth.co.uk

See things differently



Winkworth
for every step...

DESCRIPTION: A fondly loved three bedroom semi-detached home beautifully positioned within the ever popular Springfield Estate residence. The property sits within the catchment area for reputable schools including Oliver Goldsmith, The Hyde, and Bnos Beis Yaakov primary as well as Kingsbury High, whilst commuters can benefit from Hendon Thameslink 0.7 miles, Colindale Station (Northern Line) 0.8 miles, and Kingsbury Station (Jubilee Line) 1.1 miles. Offered with freehold tenure, the property consists of a bright and ample open plan double reception/ dining room, a basic kitchen, two double and one single bedrooms, and a family bathroom. Externally to the rear garden, there is a modern studio style outbuilding with a shower room, as well as off street parking to the front of the house. Scope to extend (STPP). An internal viewing is advised.

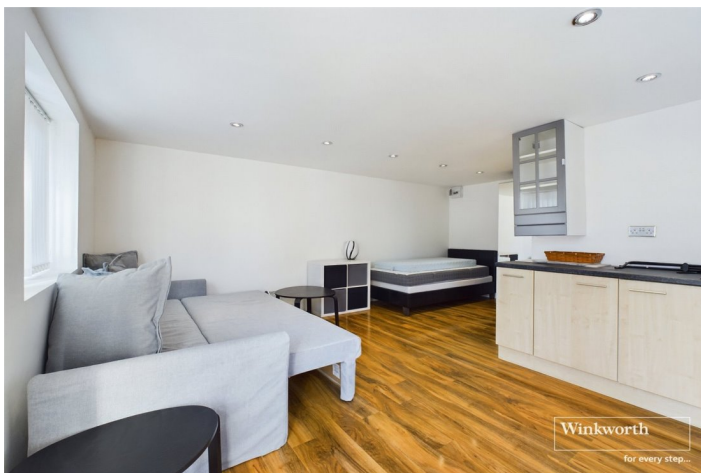


Winkworth
for every step...

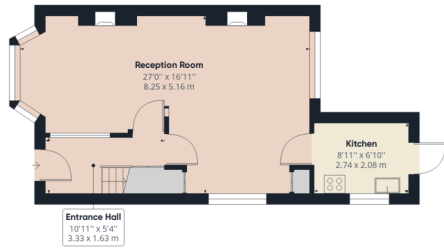


Winkworth
for every step...

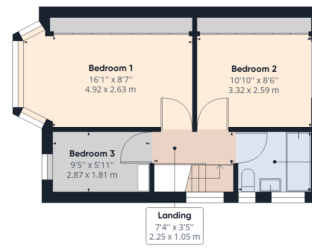




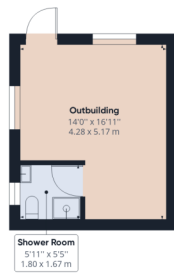
Winkworth



Ground Floor Building 1



Floor 1 Building 1



Ground Floor Building 2

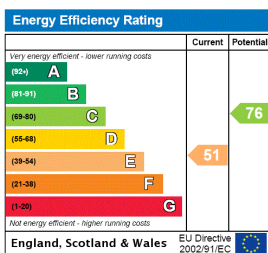
Approximate total area⁽¹⁾
1139.17 ft²
105.83 m²

(1) Excluding balconies and terraces

While every attempt has been made to ensure accuracy, all measurements are approximate, not to scale. This floor plan is for illustrative purposes only.

GIRAFFE360

This floorplan is for illustration purposes only and is not to scale. The position and size of doors, windows, appliances and other features are approximate.



Kingsbury | 020 8204 0000 | kingsbury@winkworth.co.uk

