



PARKLANDS ROAD, SW16
OIEO £1,200,000 FREEHOLD

STUNNING PERIOD FAMILY HOME SITUATED WITHIN THE SOUGHT AFTER AREA OF FURZEDOWN

Tooting | 020 8767 5221 | tooting@winkworth.co.uk

Winkworth

for every step...

winkworth.co.uk



DESCRIPTION

At over 2000 sq ft, this handsome terraced house has been superbly maintained whilst retaining many original features. The house comprises a stunning reception room to the front of the property with a working gas fireplace and large sash windows. A separate dining room is adjacent which flows into the large kitchen/diner. The kitchen boasts integral appliances and plentiful storage. A further reception area is to the rear of the kitchen. Large bifold doors lead into the private rear garden. the rear garden has been carefully landscaped and is surrounded by mature shrubs. There are three generous double bedrooms on the first floor, a single bedroom currently used as a study and a large family shower room. A beautiful master bedroom is located in the loft benefitting from a stunning ensuite bathroom.

Tenure: Freehold

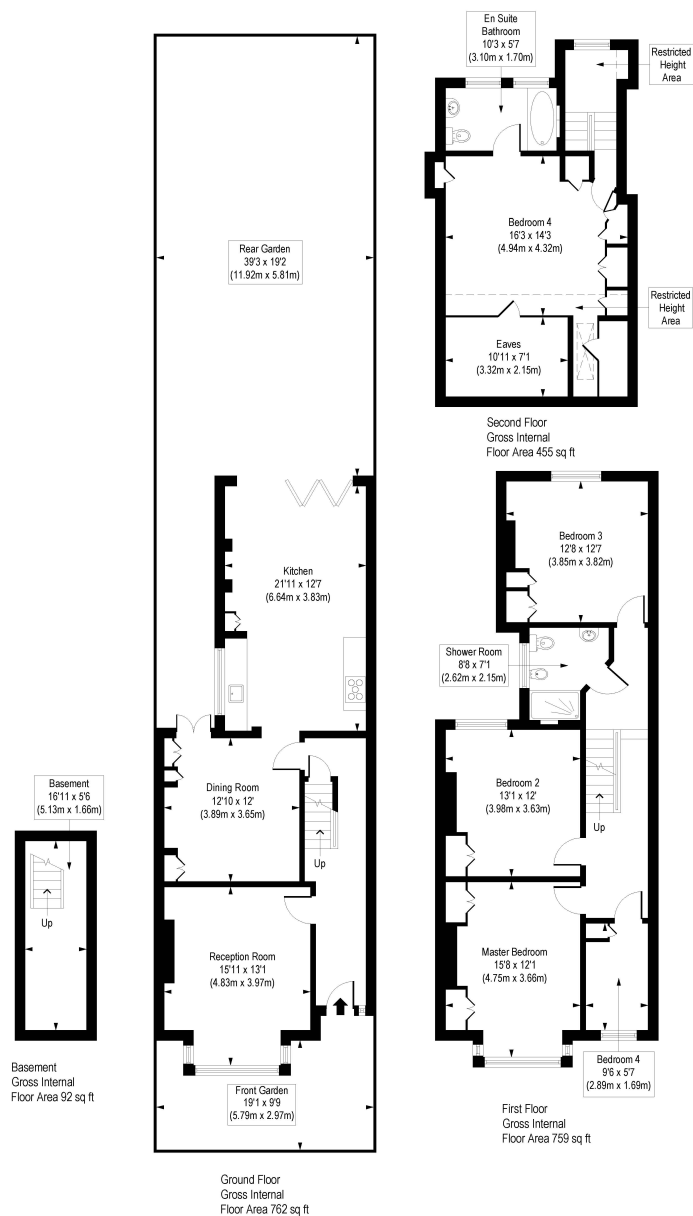
Council tax: Wandsworth council tax band F

Parklands Road is situated within the highly acclaimed Furzedown Estate in Wandsworth. A wide range of local amenities can be found within easy reach on Moyser Road and Tooting High Road. Transport links are found at Tooting Bec Underground (Northern Line) as well as Streatham Common (providing access to London Bridge, Victoria and Clapham Junction), and Streatham Hill (providing Thames Link services). Local schools include Graveney Primary, as well as St Anselm's Primary and Graveney Secondary School (both rated outstanding). The property is also within striking distance of Tooting Bec Common with its acres of open green space.



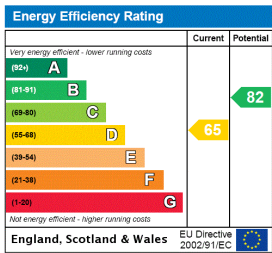
Parklands Road, SW16

Approx. Gross Internal Floor Area 2068 sq. ft / 192.15 sq. m (Including Restricted Height Area & Eaves)
Approx. Gross Internal Floor Area 1918 sq. ft / 178.21 sq. m (Excluding Restricted Height Area & Eaves)



COMPLIANT WITH RICS CODE OF MEASURING PRACTICE Floorplan is for illustrative purposes only and is not to scale. Every attempt has been made to ensure the accuracy of the floorplan shown, however all measurements, fixtures, fittings and data shown are an approximate interpretation for illustrative purposes only. Liability for errors, omissions or mis-statement through negligence or otherwise is hereby excluded.

This floorplan is for illustration purposes only and is not to scale. The position and size of doors, windows, appliances and other features are approximate.



for every step...

Tooting | 020 8767 5221 | tooting@winkworth.co.uk

winkworth.co.uk

Winkworth wishes to inform prospective buyers and tenants that these particulars are a guide and act as information only. All our details are given in good faith and believed to be correct at the time of printing but they don't form part of an offer or contract. No Winkworth employee has authority to make or give any representation or warranty in relation to this property. All fixtures and fittings, whether fitted or not are deemed removable by the vendor unless stated otherwise and room sizes are measured between internal wall surfaces, including furnishings.