



ASHBY STREET, LONDON, EC1V
£550,000

A lateral conversion one bed on the top floor of a Georgian period terrace house.

Clerkenwell | 020 7405 1288 | clerkenwell@winkworth.co.uk

Winkworth

for every step...

winkworth.co.uk



DESCRIPTION:

The property comprises of a well sized reception room with a separate sit-in kitchen, a large double bedroom and bathroom. Positioned just off Northampton Square and well located for easy access to Angel, the City and the West End.



Winkworth

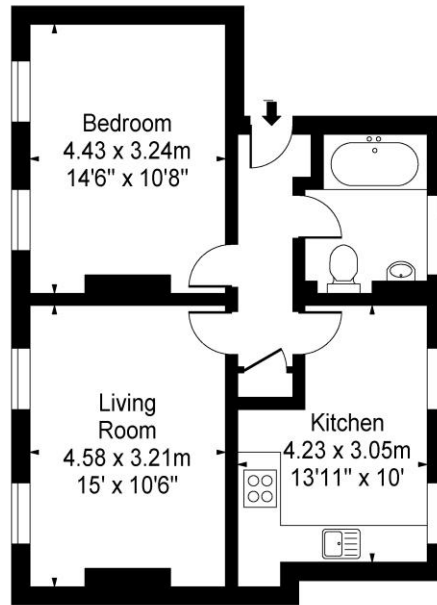
for every step...



Winkworth
for every step...



Ashby Street, EC1V

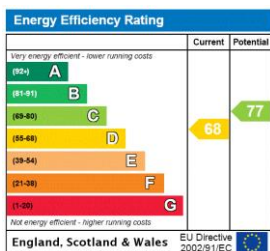


Second Floor

Approx Gross Internal Area 569 Sq Ft - 52.90 Sq M

This floor plan should be used as a general outline for guidance only and constitute in whole or in part an offer or contract. Any intending purchaser or lessee should satisfy themselves by inspection, searches, enquiries and full survey as to the correctness of each statement. Any areas, measurements or distances quoted are approximate and should not be used to value a property or be the basis of any sale or let.

This floorplan is for illustration purposes only and is not to scale. The position and size of doors, windows, appliances and other features are approximate.



Clerkenwell | 020 7405 1288 | clerkenwell@winkworth.co.uk

Winkworth

for every step...

winkworth.co.uk

Winkworth wishes to inform prospective buyers and tenants that these particulars are a guide and act as information only. All our details are given in good faith and believed to be correct at the time of printing but they don't form part of an offer or contract. No Winkworth employee has authority to make or give any representation or warranty in relation to this property. All fixtures and fittings, whether fitted or not are deemed removable by the vendor unless stated otherwise and room sizes are measured between internal wall surfaces, including furnishings.