



KESWICK ROAD, SW15
£2,750 PER MONTH UNFURNISHED

Winkworth



KESWICK ROAD, SW15

This three bedroom flat is presented in good condition and benefits from wood flooring throughout.

Situated on the ground floor of a converted house the spacious reception room includes a feature fireplace and French doors opening onto a garden extending to over 45 foot.

Just off the reception room is the generously sized master bedroom. There are also two further bedrooms, both of which are doubles. There is also a smart family bathroom.

The kitchen is at the rear of the property and also opens onto the sunny garden owing to its south westrely aspect.

The property also benefits from off street parking for multiple cars and side access to the garden.

LOCATION

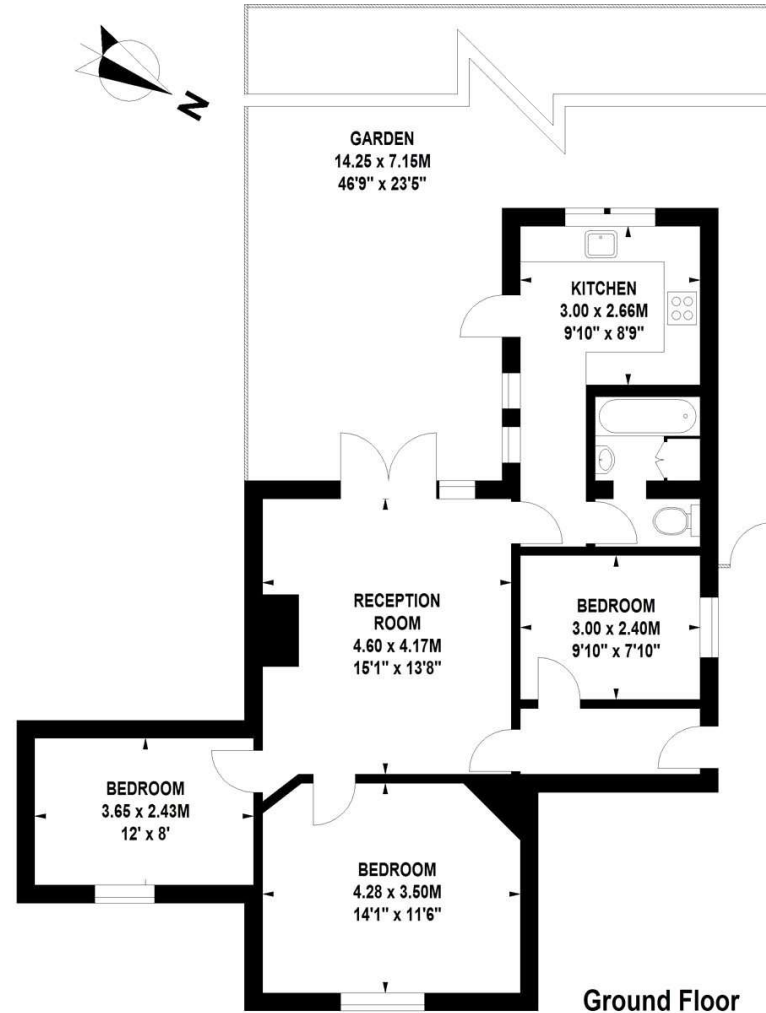
Keswick Road is situated off the Upper Richmond Road and West Hill and is therefore a short walk from East Putney underground station and Putney mainline station.





Keswick Road, SW15

Approximate Gross Internal Area 72 sq.m / 775 sq. ft



Floor Plan produced for WINKWORTH by Mays Floorplans © . Tel 020 3397 4594
Illustration for identification purposes only, not to scale
All measurements are maximum, and include wardrobes and window bays where applicable

Energy Efficiency Rating		
	Current	Potential
Very energy efficient - lower running costs		
(90+) A		
(81-90) B		
(69-80) C		
(55-68) D	61	71
(39-54) E		
(21-38) F		
(1-20) G		
Not energy efficient - higher running costs		
England, Scotland & Wales		EU Directive 2002/91/EC

Putney | 020 8877 1000 | putney@winkworth.co.uk

winkworth.co.uk

Winkworth wishes to inform prospective buyers and tenants that these particulars are a guide and act as information only. All our details are given in good faith and believed to be correct at the time of printing but they don't form part of an offer or contract. No Winkworth employee has authority to make or give any representation or warranty in relation to this property. All fixtures and fittings, whether fitted or not are deemed removable by the vendor unless stated otherwise and room sizes are measured between internal wall surfaces, including furnishings.

Winkworth