



Wastdale Road, SE23

£475,000 *Leasehold*

3  1  1 

Offering over 1,200 sq ft of thoughtfully designed living space, this chain-free split-level maisonette is perfectly positioned within easy reach of transport links, schools and local amenities.



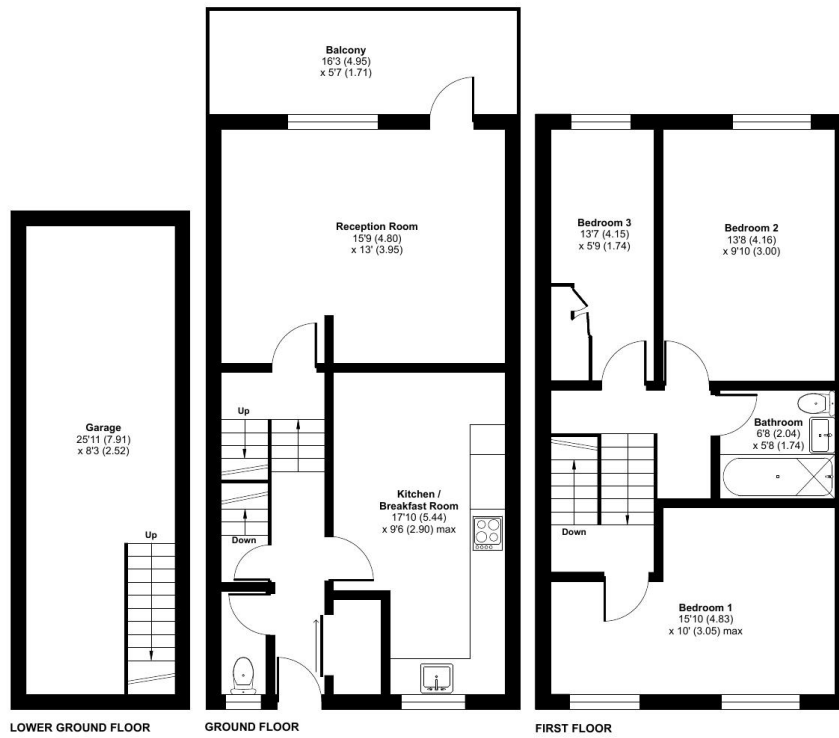
Forest Hill

| foresthill@winkworth.co.uk

Wastdale Road, London, SE23

Approximate Area = 1201 sq ft / 111.5 sq m (Includes Garage)

For identification only - Not to scale

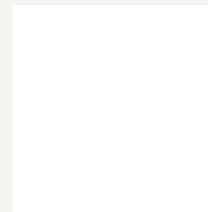


Floor plan produced in accordance with RICS Property Measurement Standards incorporating International Property Measurement Standards (IPMS2 Residential). © nichecom 2025. Produced for Winkworth Forest Hill and New Cross. REF: 1365791

MATERIAL INFO

For more information, scan the QR code or visit the link below

Tenure: Leasehold



<https://www.winkworth.co.uk/sale/property/FHL250245>

Where no figures are shown, we have been unable to ascertain the information. All figures that are shown were correct at the time of printing.

Forest Hill

| foresthill@winkworth.co.uk