

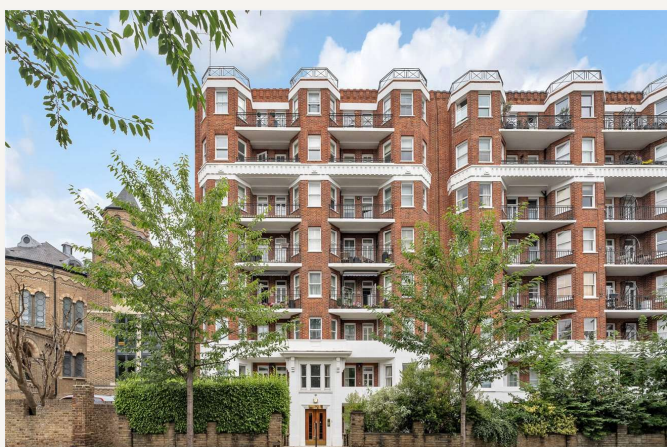


Neville Court, St John's Wood, London, NW8

£2,250,000 *Leasehold*

3  2  3 

A beautifully presented interior designed three-bedroom apartment situated on the first-floor of this popular secure portered building located on Abbey Road. The apartment benefits from a double reception room with French doors on to a private balcony and air-conditioning. All bedrooms have bespoke fitted wardrobes in addition to the principal bedroom, which further benefits from direct access to a second private balcony, the property also has under floor heating and doubled glazed windows. Neville Court is located almost opposite the famous Abbey Road Studios and is less than half a mile away from the newly landscaped high street, Regent's Park and Lord's Cricket Ground.



St John's Wood

020 7586 7001 | stjohnswood@winkworth.co.uk



KEY FEATURES

- Three Bedrooms (Two with En-suites)
- Three Bathrooms
- Reception Room
- Kitchen
- Two Balconies
- Entrance Phone
- Passenger Lift
- Porterage
- Leasehold



MATERIAL INFO

Tenure: Leasehold

Term: 943 year and 0 months

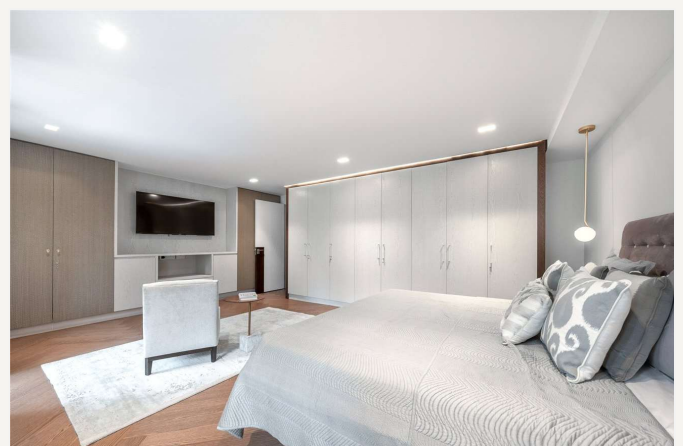
Service Charge: £13,203.56 per annum

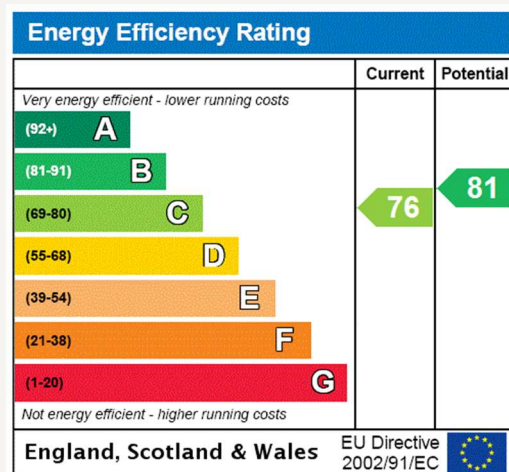
Service Charge Note: Includes Reserve Fund Contribution of £6,241.77 per annum

Ground Rent: £0 Annually (subject to increase)

Council Tax Band: G

EPC rating: C





For more information, scan the QR code or visit the link below



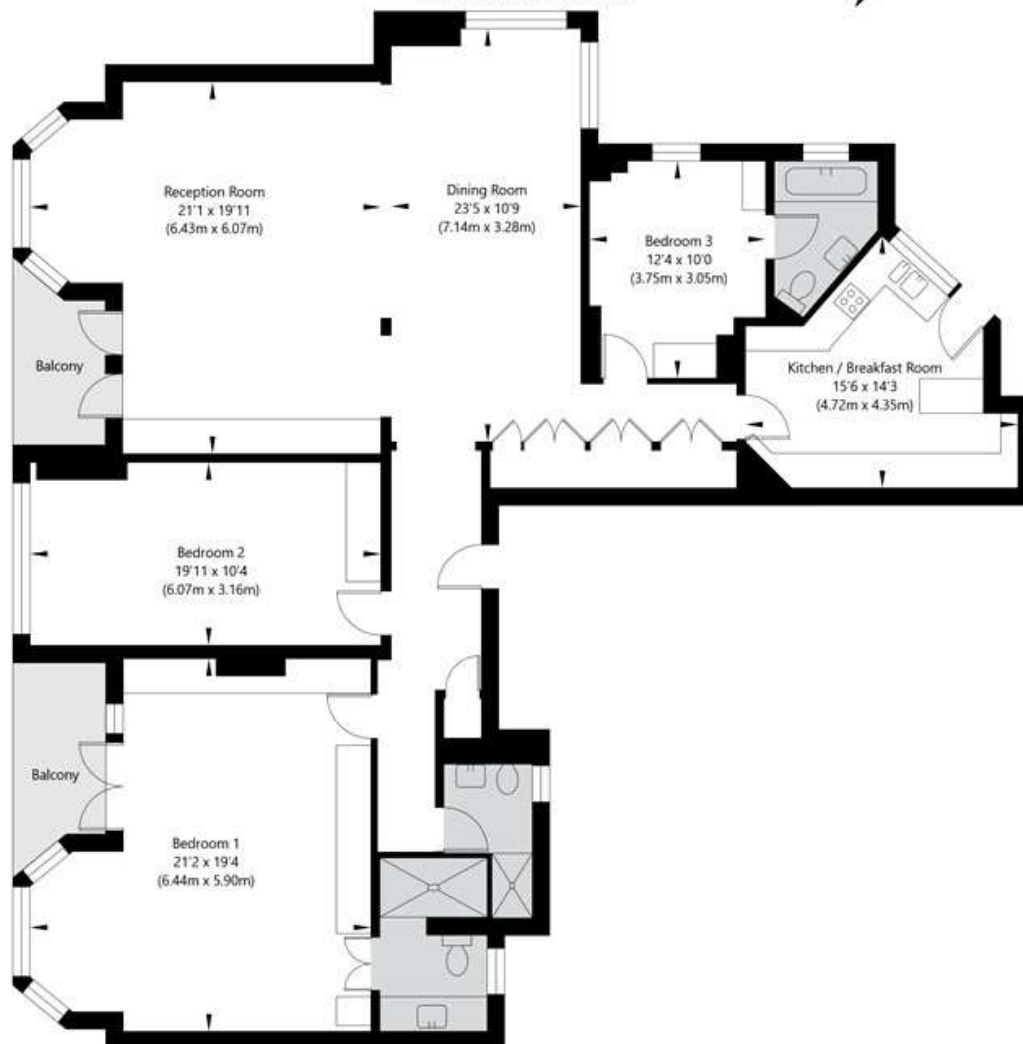
<https://www.winkworth.co.uk/sale/property/SJD120866>

Neville Court, Abbey Road, NW8 9DB

First Floor

GROSS INTERNAL FLOOR AREA EXCLUDING BALCONIES
APPROX. 174.00 SQ M / 1875 SQ FT

GROSS INTERNAL FLOOR AREA INCLUDING BALCONIES
180.80 SQ M / 1946 SQ FT



GROSS INTERNAL FLOOR AREA EXCLUDING BALCONIES
APPROX. 174.00 SQ M / 1875 SQ FT

GROSS INTERNAL FLOOR AREA INCLUDING BALCONIES
180.80 SQ M / 1946 SQ FT

THIS FLOOR PLAN IS FOR ILLUSTRATIVE PURPOSES ONLY AND
SHOULD BE USED FOR THIS PURPOSE BY PROSPECTIVE APPLICANTS AS ITS NOT TO SCALE.

(c) AMBERSHORE PIX LIMITED / PHOTO - VIDEO - FLOOR PLANS / 0800 999 1577 / WWW.AMBERSHOREPIX.CO.UK

Where no figures are shown, we have been unable to ascertain the information. All figures that are shown were correct at the time of printing.

St John's Wood

020 7586 7001 | stjohnswood@winkworth.co.uk

Winkworth wishes to inform prospective buyers and tenants that these particulars are a guide and act as information only. All our details are given in good faith and believed to be correct at the time of printing but they don't form part of an offer or contract. No Winkworth employee has authority to make or give any representation or warranty in relation to this property. All fixtures and fittings, whether fitted or not are deemed removable by the vendor unless stated otherwise and room sizes are measured between internal wall surfaces, including furnishings.