



ASHDOWN DRIVE, HERTFORDSHIRE, WD6
£310,000 LEASEHOLD

A SPACIOUS THREE BEDROOM DUPLEX MAISONETTE WITH GARAGE

Borehamwood | 020 8953 8899 | borehamwood@winkworth.co.uk



DESCRIPTION:

Totalling in excess of 800 Square feet this three-bedroom duplex maisonette provides accommodation that rivals many of the local three bedroom houses at a competitive price.

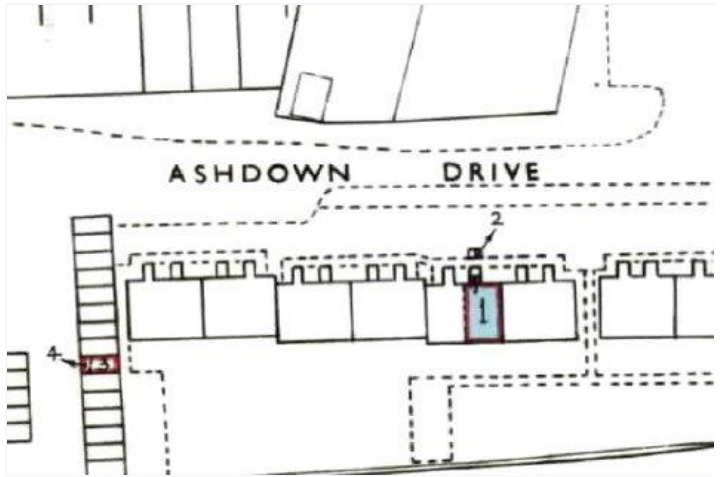
Arranged over two floors the property comprises spacious lounge/diner, kitchen, three bedrooms and family bathroom. Benefits include communal gardens, gas central heating, double glazed windows and garage en bloc.

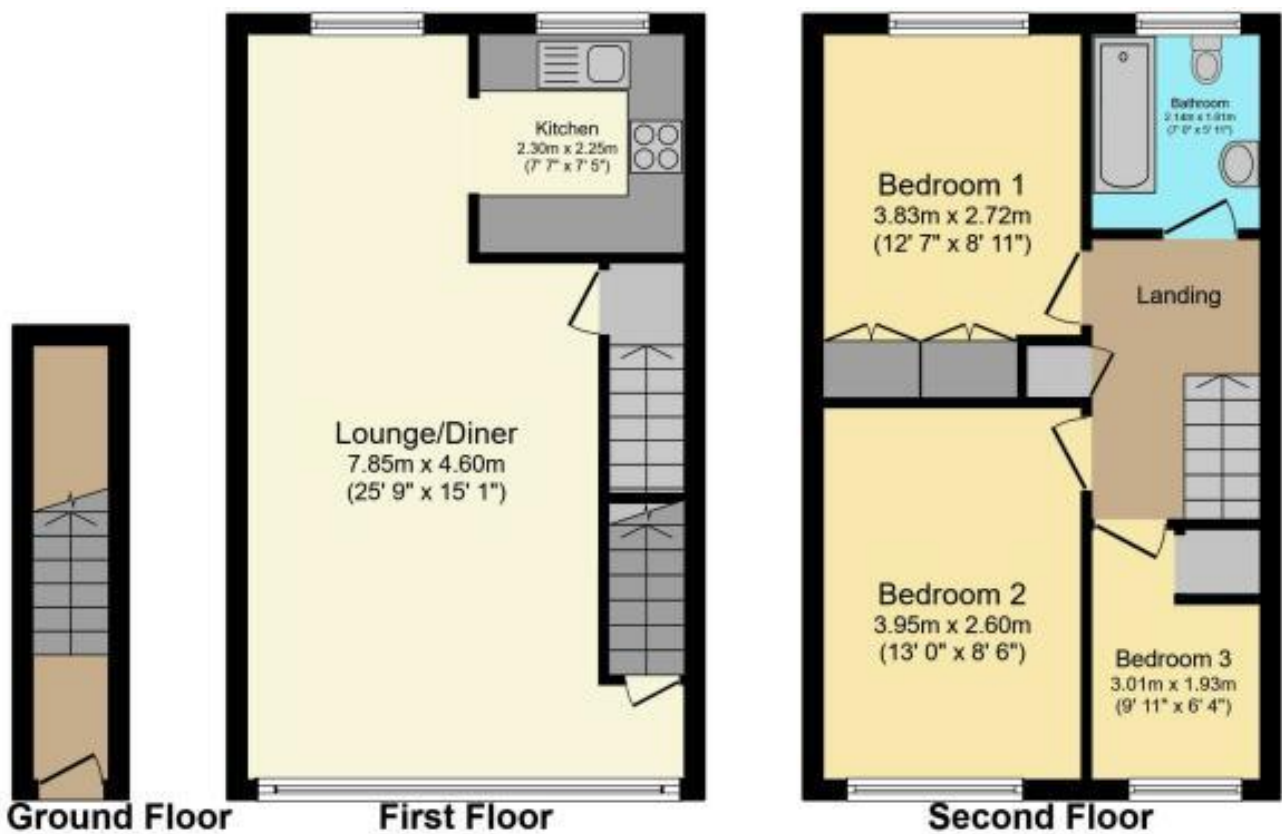
Ideally located for access to local shops, bars and restaurants. Elstree & Borehamwood train station is situated just over half a mile away.

AT A GLANCE

- 3 Bedrooms
- 817 Square Feet
- Garage
- Gas Central Heating
- Double Glazed
- Communal Gardens
- Duplex Maisonette







Total floor area 75.9 sq.m. (817 sq.ft.) approx

This floor plan is for illustrative purposes only. It is not drawn to scale. Any measurements, floor areas (including any total floor area), openings and orientation are approximate. No details are guaranteed, they cannot be relied upon for any purpose and they do not form part of any agreement. No liability is taken for any error, omission or misstatement. A party must rely upon its own inspection(s). Plan produced for Purplebricks. Powered by www.focalagent.com

This floorplan is for illustration purposes only and is not to scale. The position and size of doors, windows, appliances and other features are approximate.