



MACARTNEY HOUSE, GREENWICH, LONDON, SE10
£1,175,000 LEASEHOLD

A MAGNIFICENT TWO BEDROOM GARDEN FLAT WHICH IS PART OF THIS HISTORIC GRADE 2 LISTED HOUSE PREVIOUSLY OWNED BY THE CROWN, BUILT IN 1676 AND MEASURING 1850 SQ. FT.

Greenwich | 02030533033 | greenwich@winkworth.co.uk

Winkworth

winkworth.co.uk

See things differently



DESCRIPTION:

A magnificent two bedroom garden flat which is part of this historic grade 2 listed house previously owned by the crown, built in 1676 and measuring 1850 sq. ft.

Situated in a tranquil secluded position on a private road and enjoying an enviable location within UNESCO world heritage site of maritime Greenwich. Macartney House is of significant historical interest, having an English blue plaque commemorating the fact that General Major James Wolfe (hero of Quebec) was a former resident who came to live in the property in 1751 with his parents. His statue is located adjacent to the royal observatory and his tomb in nearby St Alfege church. Having been recently renovated by the vendor, this substantial garden flat briefly comprises a wonderful and large main reception that leads onto a stunning modern kitchen, with arched ceilings and exposed brickwork. There is a further reception/dining room, two good sized double bedrooms and shower room off the kitchen. The main bathroom is stunning and highly original, with his/hers sinks, bath and a separate shower cubicle. The property also comes with fantastic storage. With substantial and beautifully kept grounds of approximately one acre including the main communal courtyard and the stunning communal main gardens. The property also enjoys parking on Chesterfield Walk (not allocated).

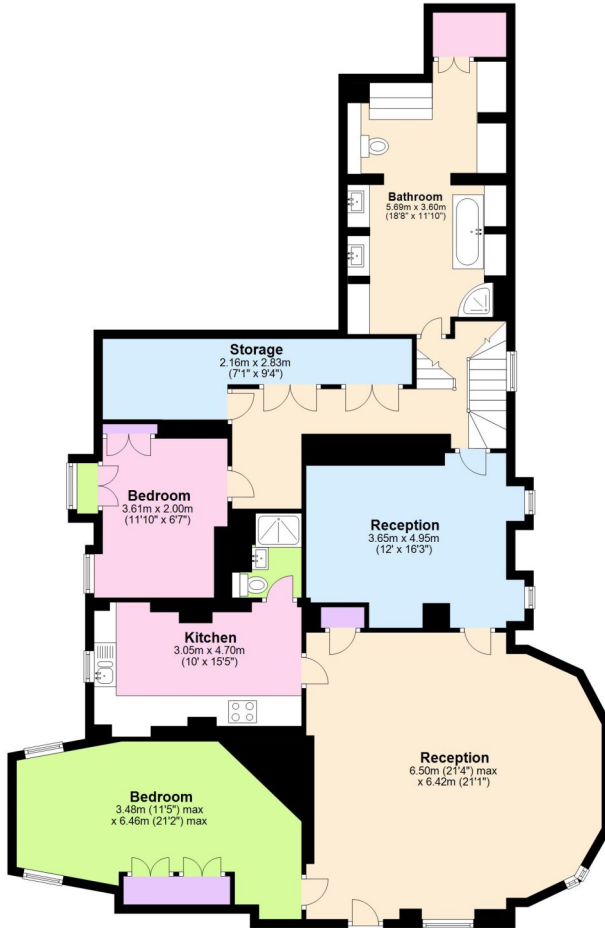
Also fronting the open heath, Blackheath village and also Greenwich town centre with all their amenities are close to hand, including shops, mainline rail and Dockland light railway. Outstanding local schools are within a short walk of the building at both primary and secondary level.





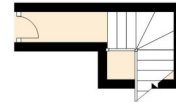
Lower Ground Floor

Approx. 160.1 sq. metres (1722.8 sq. feet)



First Floor

Approx. 3.6 sq. metres (39.3 sq. feet)



Total area: approx. 163.7 sq. metres (1762.1 sq. feet)

This floorplan is for illustration purposes only and is not to scale. The position and size of doors, windows, appliances and other features are approximate.

Greenwich | 02030533033 | greenwich@winkworth.co.uk



winkworth.co.uk

See things differently

Winkworth wishes to inform prospective buyers and tenants that these particulars are a guide and act as information only. All our details are given in good faith and believed to be correct at the time of printing but they don't form part of an offer or contract. No Winkworth employee has authority to make or give any representation or warranty in relation to this property. All fixtures and fittings, whether fitted or not are deemed removable by the vendor unless stated otherwise and room sizes are measured between internal wall surfaces, including furnishings.