

Mansfield Street, London, W1G  
£8,450 PCM

2  2  2 



Winkworth Mayfair  
020 7589 6616 | [primecentrallondon@winkworth.co.uk](mailto:primecentrallondon@winkworth.co.uk)

**Winkworth**

for every step...



# Beautifully Finished West-Facing Apartment in Marylebone

## PROPERTY DESCRIPTION

A stunning and spacious west-facing home featuring elegant wood floors, neutral décor, and contemporary finishes. The reception room benefits from high ceilings and, with its open-plan kitchen, provides excellent entertaining space. The property is located in an exclusive and elegant Grade II listed period building on Mansfield Street, which offers the additional benefits of a 24-hour concierge service

The bustling cafes and boutique shops of Marylebone High Street are nearby, the property is

moments away from the open green spaces of Regent's Park and Hyde Park. Several transport hubs are nearby, including Oxford Circus, Great Portland Street, and Regent's Park stations.

## KEY FEATURES

- 2 bedrooms
- 2 reception room
- 2 bathrooms
- 1,264 Square Feet
- Prime Location
- Decorated to a high standard

















# FINER DETAILS

- 2 bedrooms
- 2 reception room
- 2 bathrooms
- 1,264 Square Feet
- Prime Location
- Decorated to a high standard

| Score | Energy rating | Current | Potential |
|-------|---------------|---------|-----------|
| 92+   | A             |         |           |
| 81-91 | B             |         |           |
| 69-80 | C             |         |           |
| 55-68 | D             |         |           |
| 39-54 | E             |         |           |
| 21-38 | F             |         |           |
| 1-20  | G             |         |           |

# Mansfield Street, W1

Approximate Gross Internal Floor Area : 1253 sq ft / 116.4 sq m

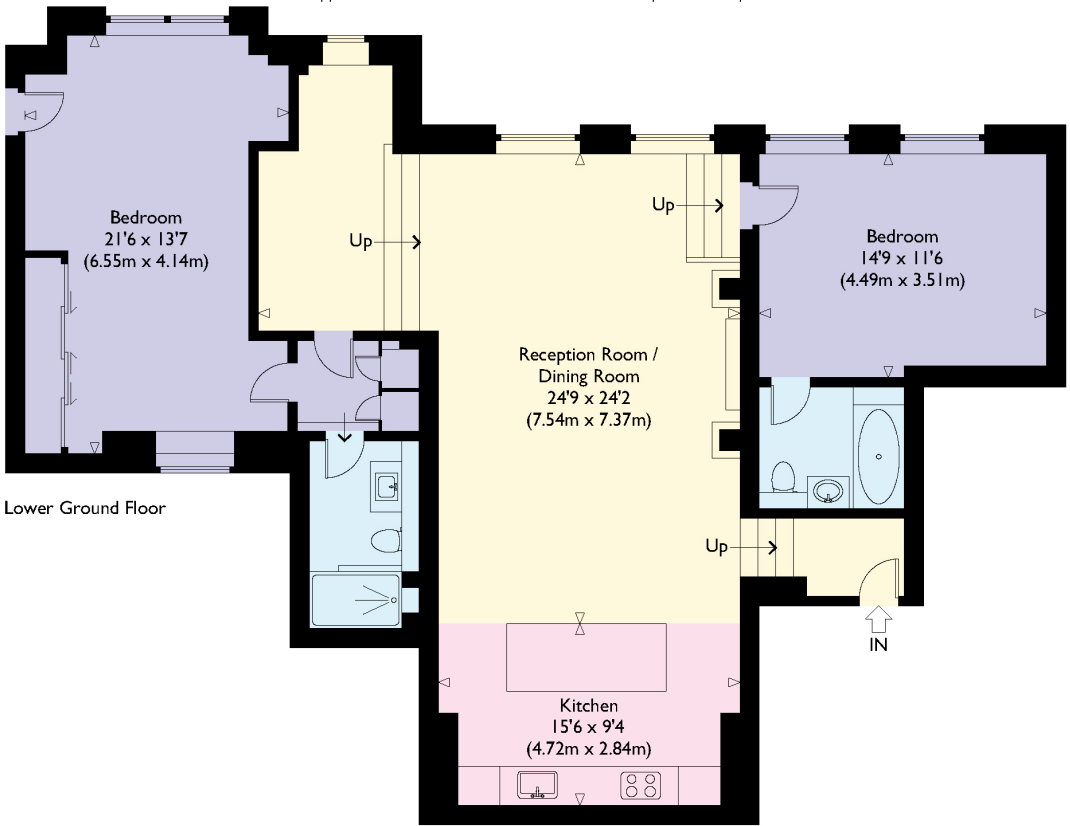


Illustration for identification purposes only, measurements are approximate, not to scale.





Winkworth Mayfair  
020 7589 6616 | [primecentrallondon@winkworth.co.uk](mailto:primecentrallondon@winkworth.co.uk)

**Winkworth**

for every step...