



ENDELL STREET, WC2
£550,000 LEASEHOLD

Winkworth



ENDELL STREET, WC2

A bright one-bedroom first-floor apartment with lift access and a private south-facing balcony, set within an iconic former council block in the heart of Covent Garden.

Residents benefit from a large communal garden, and the property is moments from the Oasis Sports Centre, home to two heated swimming pools.

The flat is clean and well-kept but would benefit from modernisation. Ideally located for Covent Garden Underground, Holborn, the Elizabeth Line and within easy reach of Theatreland, world-class restaurants and the nearby universities including LSE, UCL, King's College and SOAS.

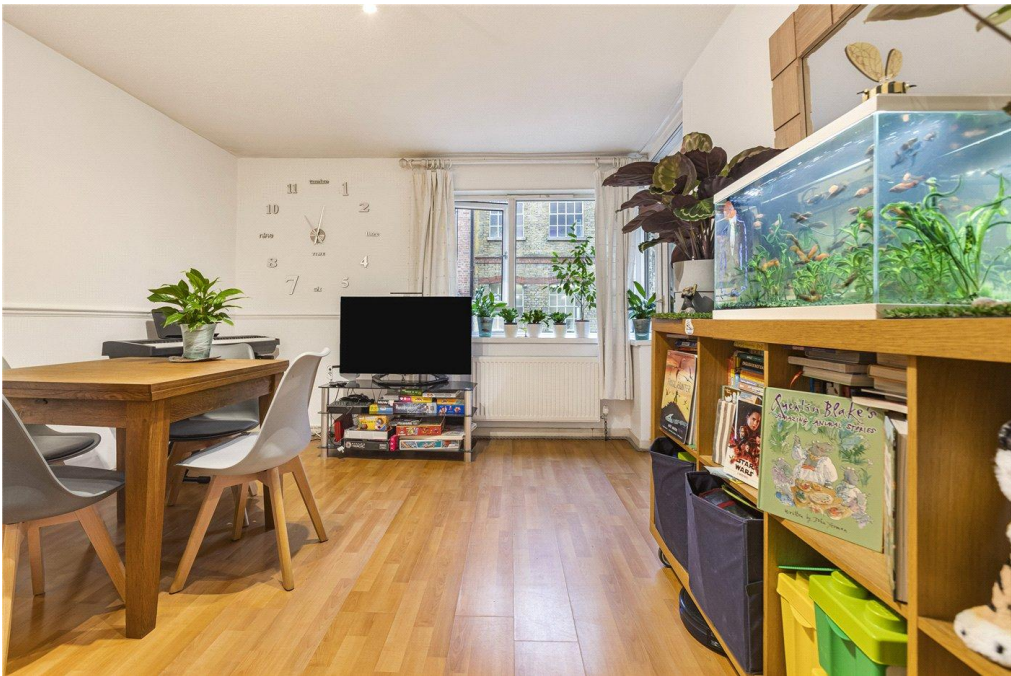
Leasehold: About 99 years remaining
(125 years from 1999)

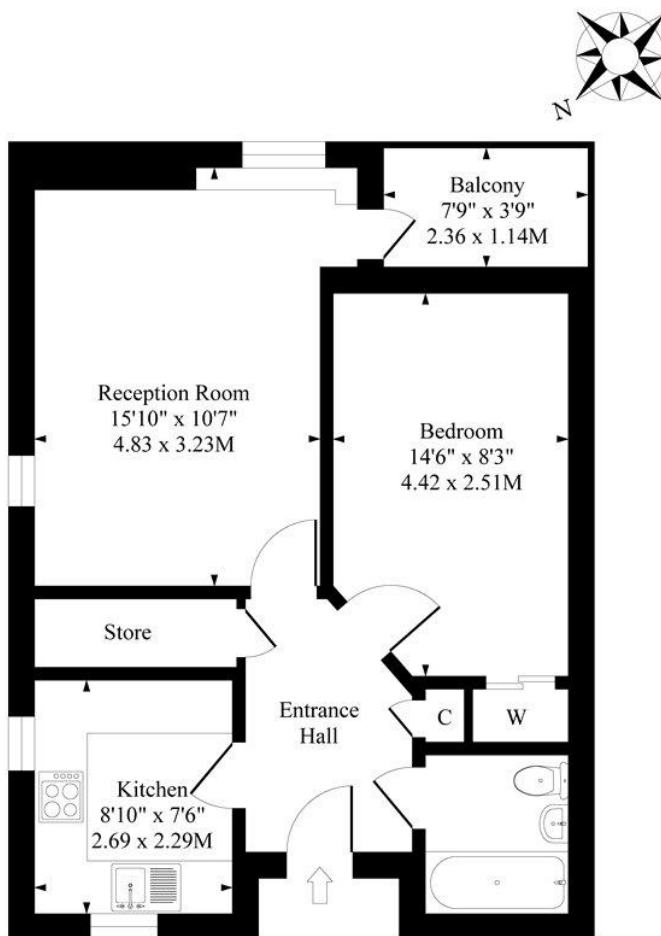
Service Charge: About £3,207 p/a (includes heating, hot water & caretaker)

Ground Rent: About £10 p/a

Council Tax: Band D, Camden







First Floor

Approximate Gross Internal Area 516 Sq Ft - 49.93 Sq M

Measured in according with RICS guidelines. Every attempt is made to ensure accuracy
However all measurments are approximate.
The floor plan is illustrative purposes only and is not to scale

Score	Energy rating	Current	Potential
92+	A		
81-91	B		
69-80	C		76 C
55-68	D	67 D	
39-54	E		
21-38	F		
1-20	G		

Clerkenwell and City | 020 7405 1288 | clerkenwell@winkworth.co.uk

winkworth.co.uk

Winkworth wishes to inform prospective buyers and tenants that these particulars are a guide and act as information only. All our details are given in good faith and believed to be correct at the time of printing but they don't form part of an offer or contract. No Winkworth employee has authority to make or give any representation or warranty in relation to this property. All fixtures and fittings, whether fitted or not are deemed removable by the vendor unless stated otherwise and room sizes are measured between internal wall surfaces, including furnishings.

Winkworth