



6 The Parade, Southampton Road, Cadnam SO40 2NG

Winkworth



STUNNING FAMILY HOME

6 The Parade is a well-presented end of terrace house located in the village of Cadnam. Situated within the New Forest National Park, Cadnam is ideally positioned with easy access onto the motorway network with fast links to either the south coast or London. Direct rail links to Waterloo are just a five minute drive away at Ashurst or Totton. Cadnam enjoys a number of well regarded public houses and eateries with a comprehensive range of amenities available in the nearby market town of Romsey or the village of Lyndhurst. Local schooling is available in the neighbouring villages of Copythorne or Bartley and falls within catchment for Hounsdown Secondary School.

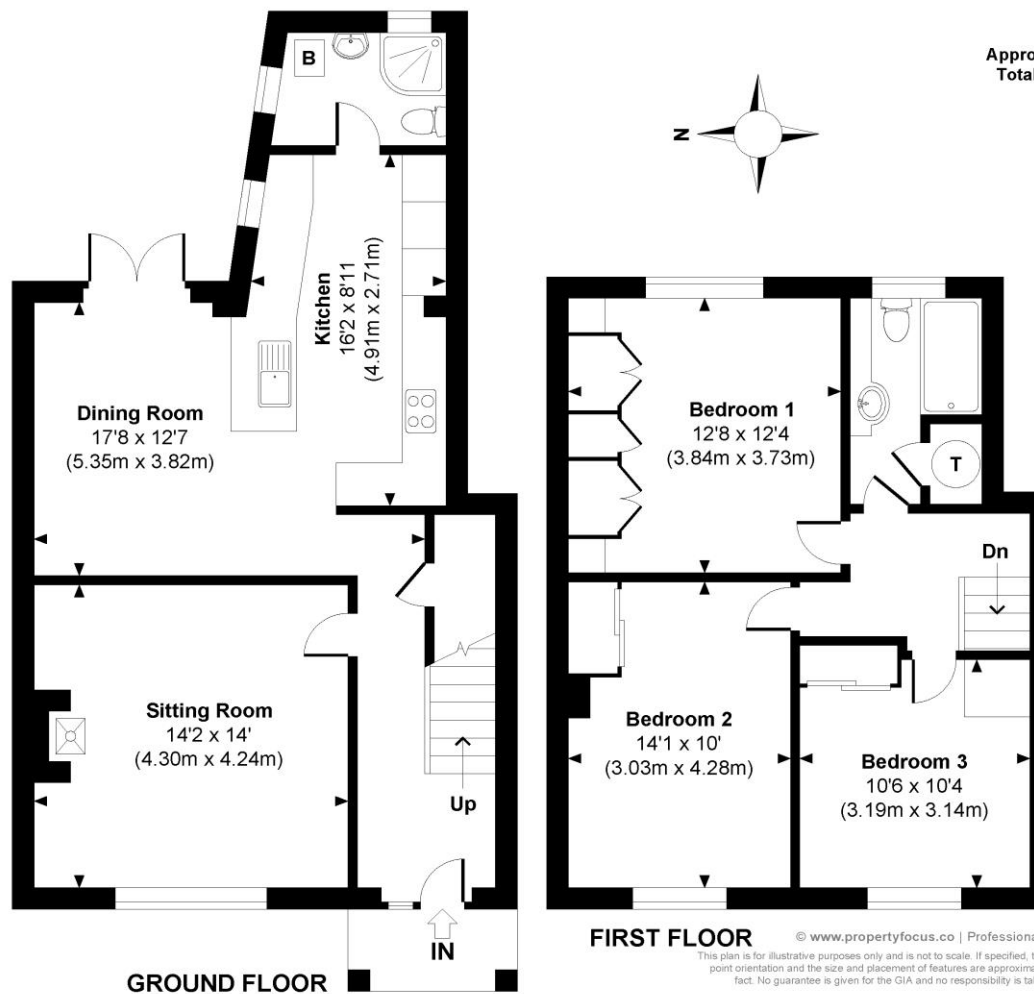
Having been lovingly maintained by the current owners, 6 The Parade, provides a delightful home with the added benefit of a private rear garden and off road parking. The accommodation comprises a spacious living room with feature fireplace, a large kitchen/dining room, the kitchen being well-fitted and finished to a very high standard, a downstairs cloakroom with shower completes the downstairs accommodation. To the first floor there are three generous bedrooms, and a family bathroom.

Outside there is gate which leads through the pretty front garden to the front door. To the rear, the garden has been beautifully landscaped, mainly laid to lawn with a lovely patio area ideal for entertaining.



Winkworth

**Address: 6 The Parade,
Southampton Road, Cadnam SO40
2NG
Council Tax Band: "D"**



The Parade
Approximate Gross Internal Area
Total = 1180 Sq Ft / 109.66 Sq M



© www.propertyfocus.co.uk | Professional Property Photography & Floorplans
This plan is for illustrative purposes only and is not to scale. If specified, the Gross Internal Area (GIA), dimensions, North point orientation and the size and placement of features are approximate and should not be relied on as a statement of fact. No guarantee is given for the GIA and no responsibility is taken for any error, omission or misrepresentation.

winkworth.co.uk/romsey

Winkworth Romsey

18 Market Place, Romsey, Hampshire, SO51 8NA
01794 511911 | romsey@winkworth.co.uk

winkworth.co.uk/romsey

Winkworth Winchester

2 Black Swan Buildings, Southgate Street,
Winchester, Hampshire, SO23 9DT
01962 866777 | winchester@winkworth.co.uk

Winkworth Mayfair & Country House Department

11 Berkeley Street, Mayfair, London, W1J 8DS
020 7871 0589 | countryhouse@winkworth.co.uk

Winkworth

See things differently