

HOLLAND ROAD, LONDON, NW10
£299,950 SHARE OF FREEHOLD

**A LOVELY LITTLE STUDIO / ONE BED APARTMENT
GREAT FOR A PIED-A-TERRER OR FIRST TIME BUYER**

Kensal & Queens Park | 0208 960 4947 | kensalrise@winkworth.co.uk

Winkworth

winkworth.co.uk

See things differently



LOCATION:

Holland Road is a lovely wide tree lined street and this flat is situated in the best location just opposite the tennis club. The properties here are larger than average and therefore buyers go for the space in this area. Transport links at Kensal Green mean that you can use the London Overground or Underground (Bakerloo Line) very easily and there is an array of shops and cafe's on College Road which is around 200m from the flat.



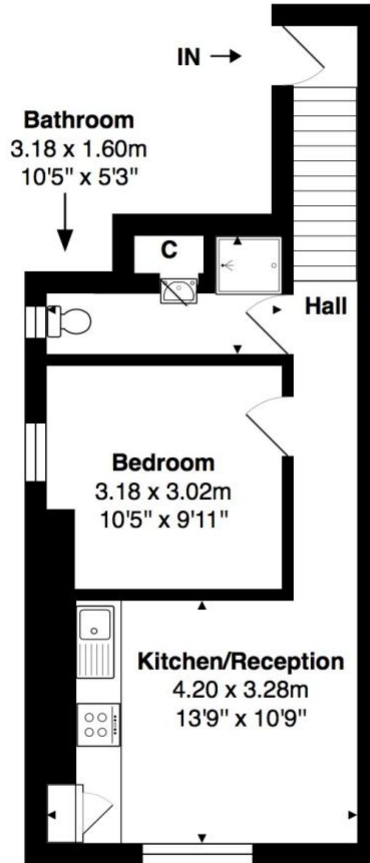
Winkworth

DESCRIPTION:

This well presented property has a kitchen / living space with a separate double bedroom and shower room measuring a total of 388 sq. ft. The property is in good condition throughout and is offered to the market with no upper chain and a share of the freehold with the two other flats in the building.

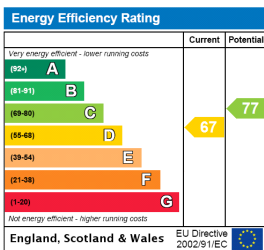
Winkworth

41c Holland Road



Total Area: 36.0 m² ... 388 ft²
 All measurements are approximate and for display purposes only

This floorplan is for illustration purposes only and is not to scale. The position and size of doors, windows, appliances and other features are approximate.



Kensal & Queens Park | 0208 960 4947 | kensalrise@winkworth.co.uk



winkworth.co.uk

See things differently

winkworth wishes to inform prospective buyers and tenants that these particulars are a guide and act as information only. All our details are given in good faith and believed to be correct at the time of printing but they don't form part of an offer or contract. No winkworth employee has authority to make or give any representation or warranty in relation to this property. All fixtures and fittings, whether fitted or not are deemed removable by the vendor unless stated otherwise and room sizes are measured between internal wall surfaces, including furnishings.