



GREENWICH ACADEMY, GREENWICH, LONDON, SE10
GUIDE PRICE £750,000 - £775,000 SHARE OF FREEHOLD

**AN INCREDIBLY UNIQUE AND SPACIOUS, THREE
BEDROOM, TWO RECEPTION LOFT APARTMENT
WITHIN THE POPULAR SCHOOL CONVERSION OF
GREENWICH ACADEMY.**

Greenwich | 02030533033 | greenwich@winkworth.co.uk

Winkworth

winkworth.co.uk

See things differently



DESCRIPTION:

Guide Price £750k -£775k An incredibly unique and spacious, three bedroom, two reception loft apartment within the popular school conversion of Greenwich Academy.

Measuring just over 1,700 sqft, the property has retained many of the original features such as double height ceilings and large windows making the apartment incredibly light throughout. The property is split over two levels to make great use of the ceiling heights and offer an abundance of space throughout. The property further benefits from a communal roof terrace and gardens to the rear.

Greenwich Academy is situated within a short walking distance Deptford Bridge DLR and is close to both Blackheath Village and Greenwich town centre as well as Greenwich train station. Greenwich town centre offers a huge array of shops and restaurants, along with mainline rail connections to central London. The Royal Park with Observatory is also just a short walk away. Your earliest viewing is highly recommended.

AT A GLANCE

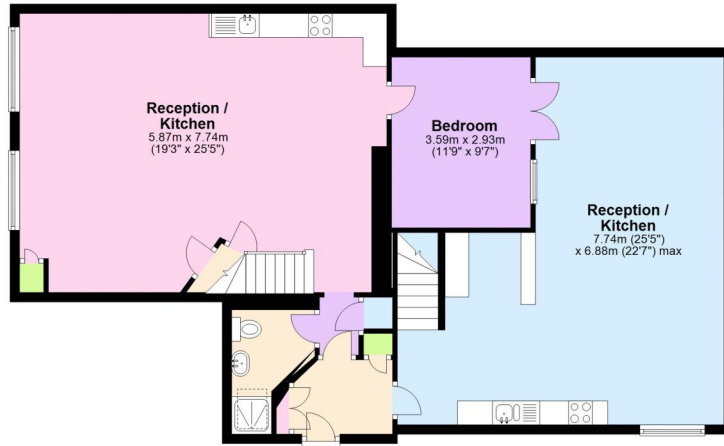
- Three bedroom apartment
- Two bathrooms
- Two receptions
- Close to Deptford DLR
- Allocated parking
- Communal garden
- Close to Greenwich village and Royal Park





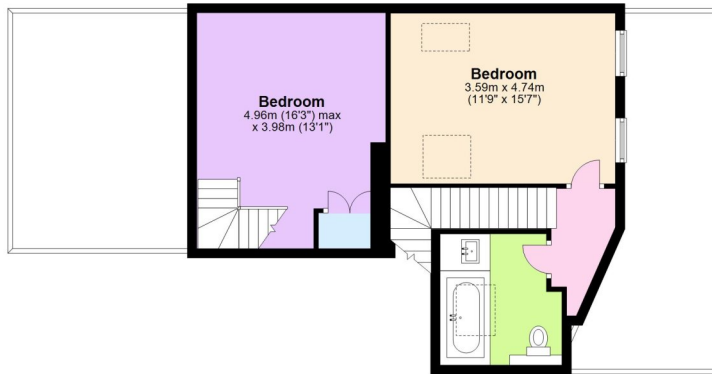
Second Floor

Approx. 109.8 sq. metres (1181.9 sq. feet)



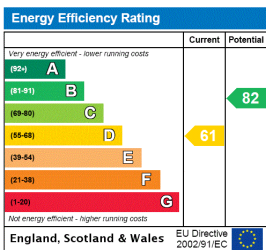
Mezzanine Level

Approx. 50.5 sq. metres (543.5 sq. feet)



Total area: approx. 160.3 sq. metres (1725.4 sq. feet)

This floorplan is for illustration purposes only and is not to scale. The position and size of doors, windows, appliances and other features are approximate.



Greenwich | 02030533033 | greenwich@winkworth.co.uk



winkworth.co.uk

See things differently

Winkworth wishes to inform prospective buyers and tenants that these particulars are a guide and act as information only. All our details are given in good faith and believed to be correct at the time of printing but they don't form part of an offer or contract. No Winkworth employee has authority to make or give any representation or warranty in relation to this property. All fixtures and fittings, whether fitted or not are deemed removable by the vendor unless stated otherwise and room sizes are measured between internal wall surfaces, including furnishings.