



**UNDERHILL ROAD, EAST DULWICH, LONDON, SE22**  
**£550,000 SHARE OF FREEHOLD**

**A SUPERB TWO-BEDROOM, GROUND FLOOR  
FLAT, SITUATED WITHIN A HANDSOME  
BUILDING IN SE22.**

Dulwich | 020 8299 2722 | [dulwich@winkworth.co.uk](mailto:dulwich@winkworth.co.uk)

Tenure Share of Freehold | Council Tax Band C – London Borough of Southwark |  
Service Charge TBC | Ground Rent TBC

[winkworth.co.uk](http://winkworth.co.uk)

**Winkworth**

See things differently



## DESCRIPTION:

A superb two-bedroom, ground floor flat, situated within a handsome building in SE22. Finished to a fantastic standard is this ground floor, two double bedroom flat, boasting space, natural light and plenty of outdoor space. The property comprises a spacious reception with dual aspect windows, making it impressively light, bright and airy. A newly refurbished and fully fitted kitchen, complete with built in appliances, wooden worktops and views of the large communal gardens to rear. The property further comprises two double bedrooms, one of which is en-suite, and a spacious family bathroom. The building is set amongst mature gardens front and back, with an impressive shared front drive and a communal garden to rear. The property further boasts a porch and private garage. This wonderful property is situated close to Dulwich Village, Lordship Lane and Forest Hill, allowing access to three different stations for transport, East Dulwich for direct links to London Bridge, West Dulwich for Victoria or Forest Hill for the East London Line. Wide, green open spaces can be found at Dulwich Woods, Dulwich Park or Peckham Rye Park. This is a wonderful flat in a superb setting and early viewings are highly advised.

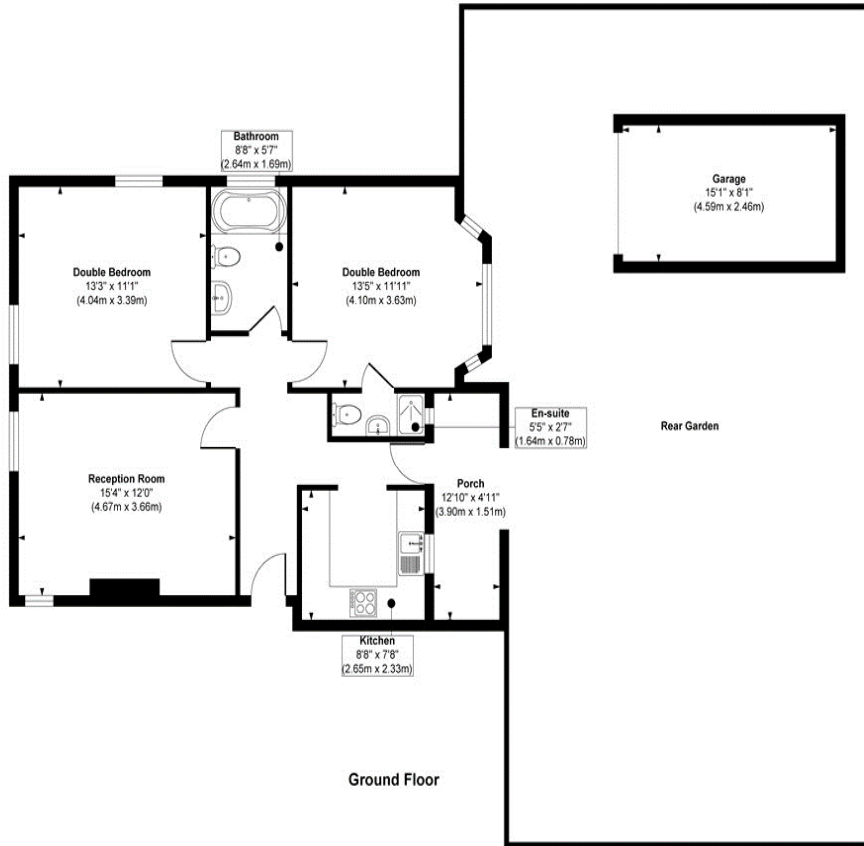
## AT A GLANCE

- Two Double Bedrooms
- Spacious Reception Room
- Modern Kitchen
- En-Suite Shower Room
- Ground Floor Flat
- Private Garage
- Communal Garden
- Fantastic Location





## Dulwich Court



**Approx. Gross Internal Floor Area 941 sq. ft / 87.49 sq. m (Including Garage)**

Illustration for identification purposes only, measurements are approximate, not to scale.

Produced by Elements Property

This floorplan is for illustration purposes only and is not to scale. The position and size of doors, windows, appliances and other features are approximate.

Dulwich | 020 8299 2722 | [dulwich@winkworth.co.uk](mailto:dulwich@winkworth.co.uk)

**Winkworth**

[winkworth.co.uk](http://winkworth.co.uk)

See things differently

Winkworth wishes to inform prospective buyers and tenants that these particulars are a guide and act as information only. All our details are given in good faith and believed to be correct at the time of printing but they don't form part of an offer or contract. No Winkworth employee has authority to make or give any representation or warranty in relation to this property. All fixtures and fittings, whether fitted or not are deemed removable by the vendor unless stated otherwise and room sizes are measured between internal wall surfaces, including furnishings.